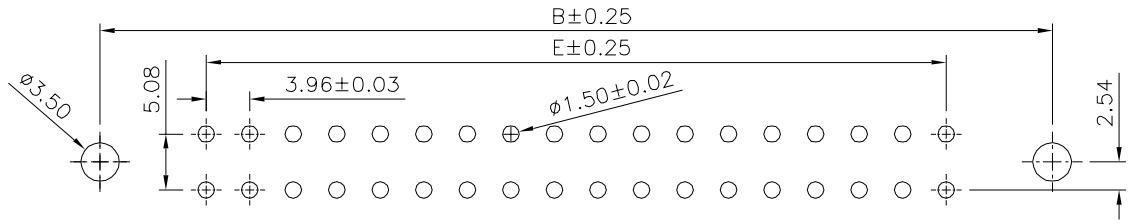
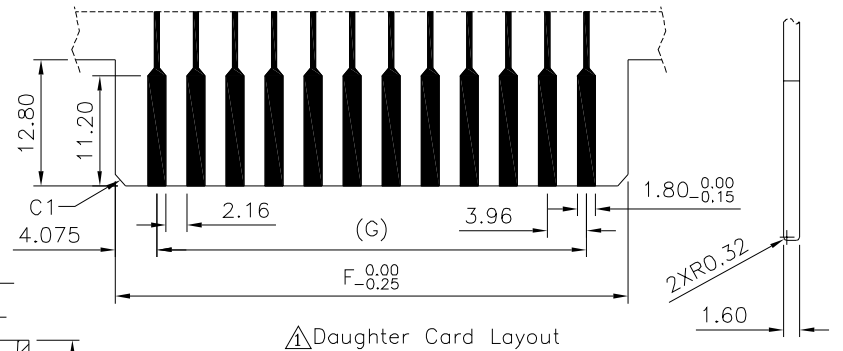
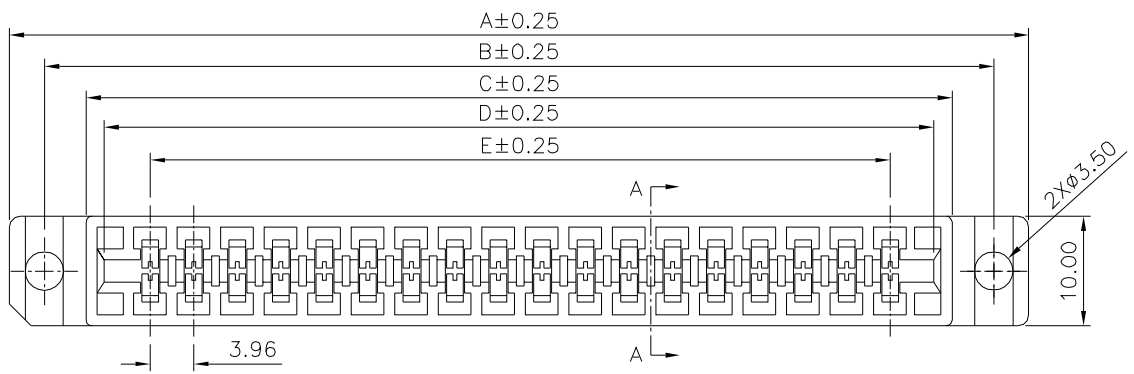


**SPECIFICATION**

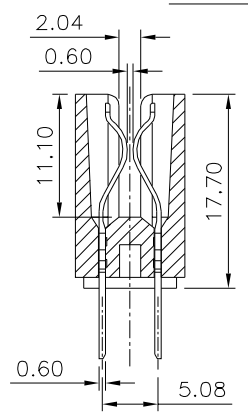
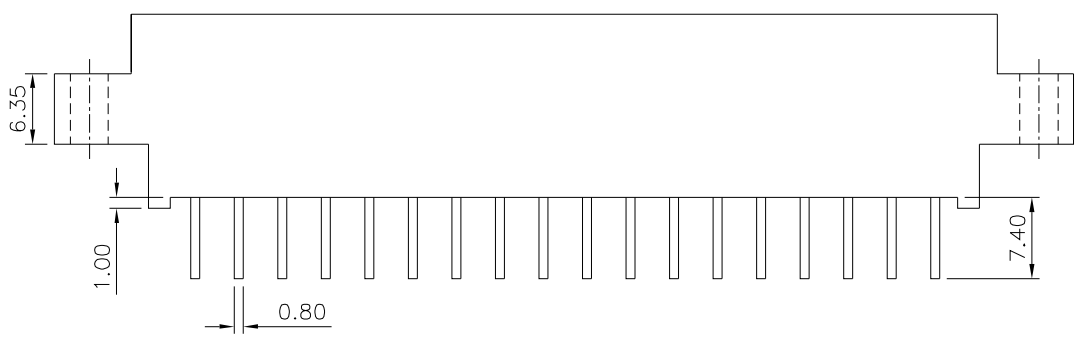
Current Rating:3A  
 Voltage Rating:800V AC 1 Minute  
 Contact Resistance: 20 Milliohms Max.  
 Insulation Resistance:5000 Megohms Min.  
 Operating Temperature:-55°C~+105°C  
 Insertion Force:412 Grams Max. Per Pair  
 Withdrawal Force:32 Grams Min. Per Pair  
 Insulator:PBT+G.F.(UL94V-0),Black  
 Contact:Phosphor Bronze,Gold Flash On Contact  
 Area,Tin Plated On Solder Tails,Over Nickel  
 RoHS Compliant



Recommended P.C.B. Layout



Daughter Card Layout



Section A-A

Pin	A	B	C	D	E	F	G
36	93.02	86.62	79.02	75.72	67.32	75.47	67.32
40	100.94	94.54	86.94	83.64	75.24	83.39	75.24
44	108.86	102.46	94.86	91.56	83.16	91.31	83.16
56	132.62	126.22	118.62	115.32	106.92	115.07	106.92
60	140.54	134.14	126.54	123.24	114.84	122.99	114.84
86	192.02	185.62	178.02	174.72	166.32	174.47	166.32
100	219.74	213.34	205.74	202.44	194.04	202.19	194.04

**4UCON** 元化興業股份有限公司  
 4UCON TECHNOLOGY INC.

DRAWING No.		APPROVED BY		UNLESS OTHERWISE SPECIFIED TOLERANCES ARE X. ±0.50 .X ±0.38 .XX ±0.25			
04665		MEI					
		CHECKED BY HZF					
SCALE NONE		DRAWING BY SONG					
		REV. BO					
UNIT	mm	NO. REV.	BO	NEW RELEASE	CHK	HZF	11/06/2023
				REVISIONS			DATE

NO. REV.	BO	NEW RELEASE	CHK	HZF	11/06/2023
		REVISIONS			DATE