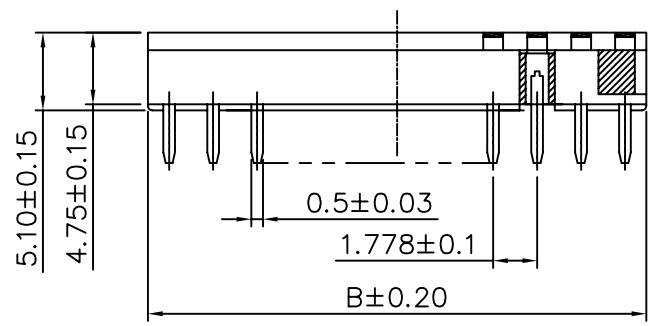
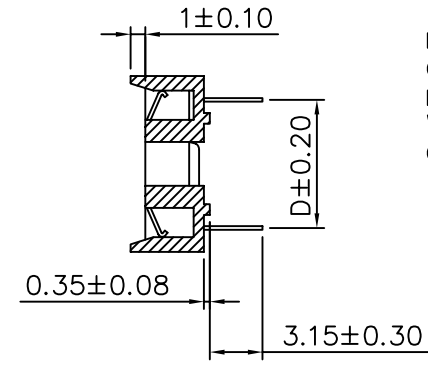
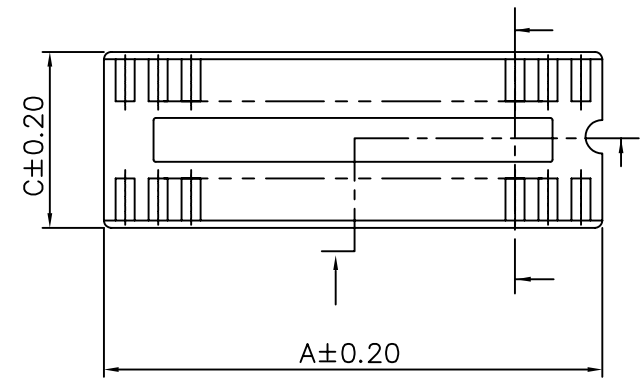


**SPECIFICATIONS**

Current Rating: 1A  
 Dielectric Withstanding Voltage: 1000V RMS/Minute  
 Contact Resistance: 20 Milliohms Initial  
 30 Milliohms After Test  
 Insulation Resistance: 5000 Megohms Min.  
 Operating Temperature: -25°C To +85°C  
 Insertion Force: 340g Max. Per Contact.  
 Withdrawal Force: 14.5g Min. Per Contact  
 Contact Material: Phosphor Bronze, Thickness 0.17mm  
 Contact Plating: Tin Plated  
 Insulator: PBT, UL 94V-0



CKT	A±0.20	B±0.20	C±0.20	D±0.20
16	14.22	12.45	10.10	7.62
20	17.78	16.00	10.10	7.62
22	19.56	17.78	10.10	7.62
24	21.34	19.56	10.10	7.62

**4UCON** 元化興業股份有限公司  
 4UCON TECHNOLOGY INC.

DRAWING No.  
 04741

APPROVED BY  
 MEI  
 CHECKED BY  
 BECKY  
 DRAWING BY  
 HZF

UNLESS OTHERWISE SPECIFIED  
 TOLERANCES ARE  
 .X ±0.38  
 .XX ±0.25  
 ANG.

SCALE NONE

REV. A0

UNIT mm

NO. REV. A0

NEW RELEASE

BECKY 2004/11/17

REVISIONS

CHK DATE