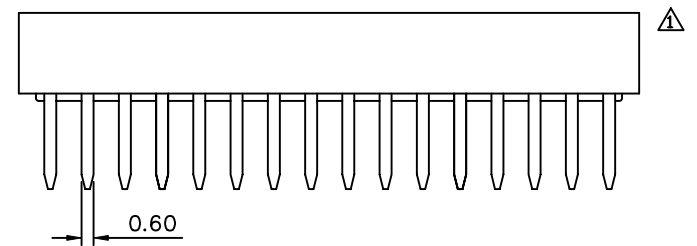
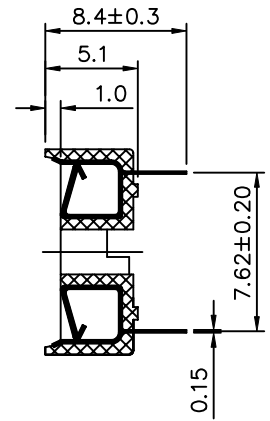
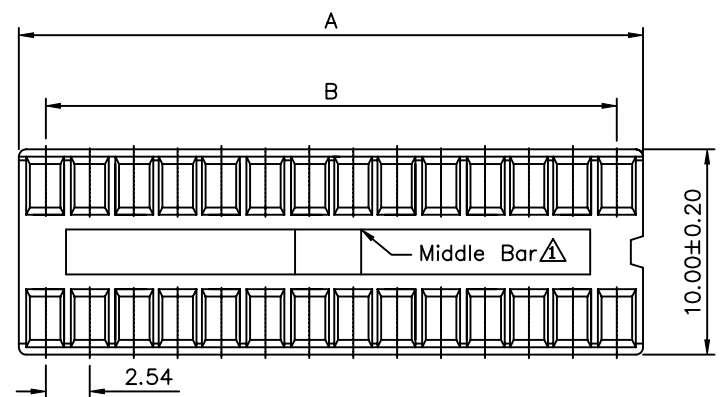


PCB Layout

**△ SPECIFICATION**  
 Current Rating: 1 mA  
 Dielectric Withstanding Voltage: 1000V AC/5s  
 Insulation Resistance: 1000 Megaohms 500V DC  
 Operation Temperature: -55°C~+105°C  
 Insulator: PBT+G.F. UL94V-0, Black  
 Contact: Phosphor Bronze, Tin Plated  
 Contact Separation Force: 0.5kg/Pin Min.  
 RoHS Compliant



Contacts	A±0.20	B±0.10	Remark
06	7.62	5.08	Without Middle Bar
08	10.16	7.62	
14	17.78	15.24	
16	20.32	17.78	
18	22.86	20.32	
20	25.40	22.86	
22	27.94	25.40	With Middle Bar
24	30.48	27.94	
28	35.56	33.02	
32	40.64	38.10	

**4UCON** 元化興業股份有限公司  
 4UCON TECHNOLOGY INC.

DRAWING No.		APPROVED BY		UNLESS OTHERWISE SPECIFIED TOLERANCES ARE X. ±0.25 .X ±0.20 .XX ±0.10
04771		MEI		
		CHECKED BY		
		HZF		
		DRAWING BY		UNIT mm
		LXX		
SCALE	NONE	REV.	B1	

NO.	REV.	REVISIONS	CHK	DATE
△ B1		Modify Data	HZF	12/17/2009
△ B0		NEW RELEASE	HZF	03/10/2009