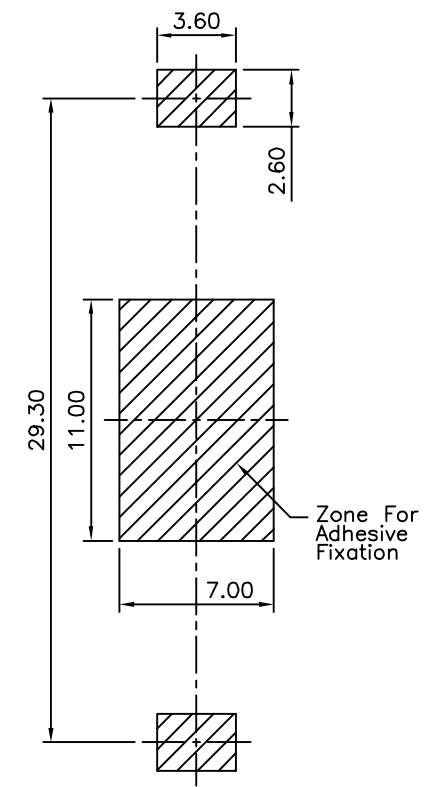
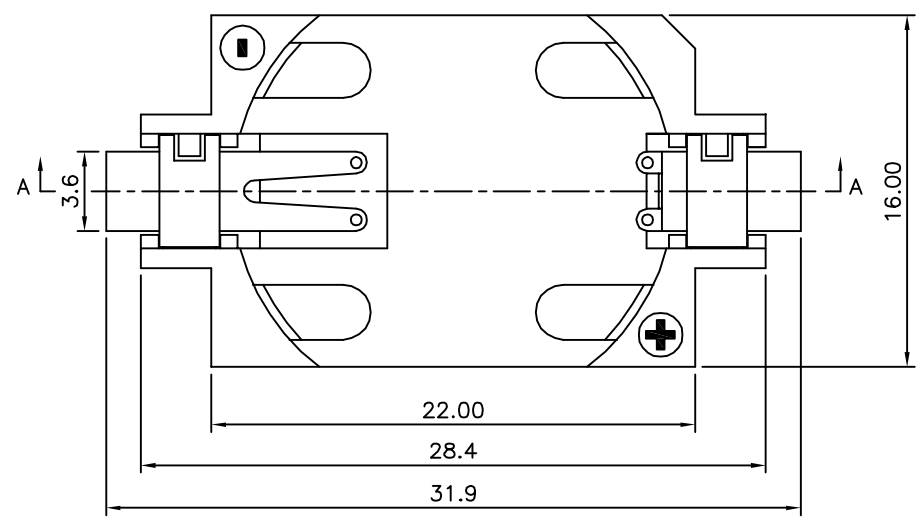
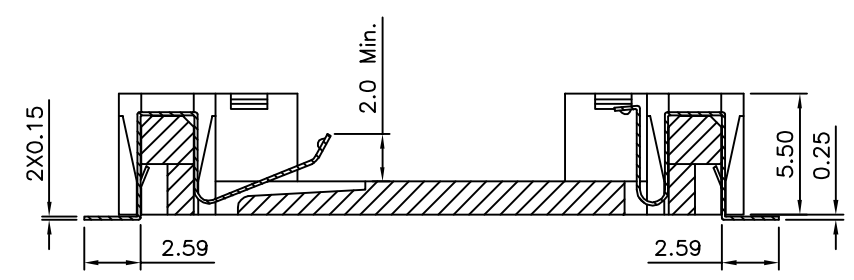


**SPECIFICATION**  
 Applicable: Battery CR2032  
 ⚠ Insulator: LCP+30%G.F.(UL94V-0), White  
 ⚠ Contact: Phosphor Bronze, Gold Flash Over All,  
 Over Nickel  
 RoHS Compliant



Recommended P.C.B. Layout



Section A-A

**4UCON** 元化興業股份有限公司  
 4UCON TECHNOLOGY INC.

DRAWING No.		APPROVED BY		UNLESS OTHERWISE SPECIFIED TOLERANCES ARE .X ±0.30 .XX ±0.20 .XXX ±0.10 ANG. ±3°
05581		EMILY		
		CHECKED BY		
		HZF		
		DRAWING BY		UNIT mm
		CYP		
SCALE	NONE	REV.	B2	NO. REV.

⚠ B2	Modify Data	HZF	03/31/2015
⚠ B1	Modify Data	HZF	11/22/2013
⚠ B0	NEW RELEASE	HZF	11/22/2011
NO. REV.	REVISIONS	CHK	DATE