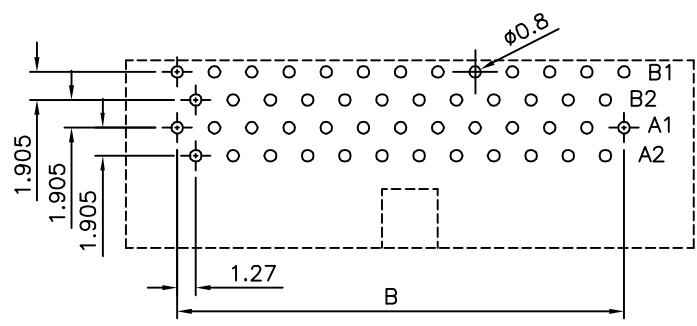
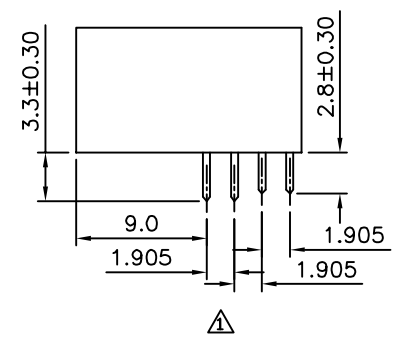
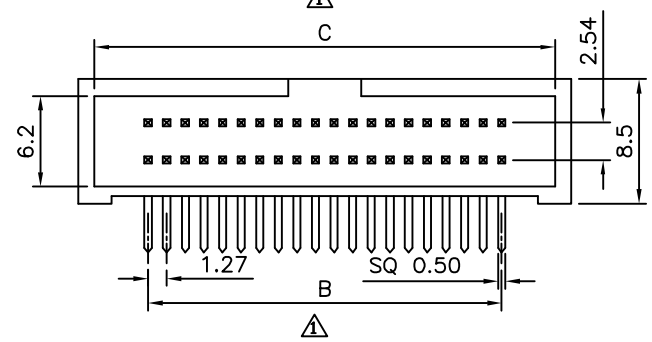
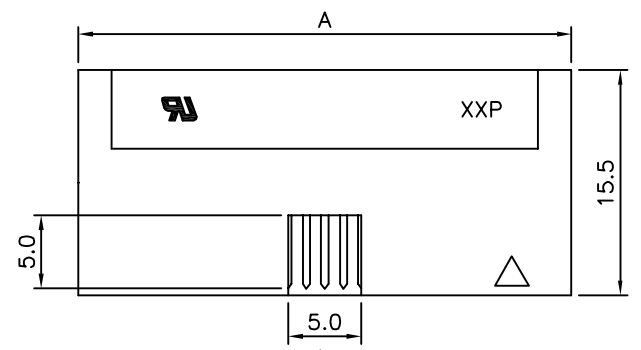


Recommended P.C.B. Layout (Top View)
(20,32,40,52,60,68,80,100 Pin)



Recommended P.C.B. Layout (Top View)
(26,34,50 Pin)

△ SPECIFICATION
 Current Rating: 1 Amp
 Withstand Voltage: 500V AC For 1 Minute
 Contact Resistance: 20 Milliohms Max. At 100mA DC
 Insulation Resistance: 1000 Megaohms Min. At 250V DC
 Operation Temperature: -55°C ~ +105°C
 Contact: Brass, Gold Flash On Contact Area, Tin Plated On Solder Tails, Over Nickel
 Insulator: PBT+G.F. (UL94V-0), Black
 RoHS Compliant



Pin	A	B	C
20	20.95	11.43	18.75
26	24.76	15.24	22.56
32	28.57	19.05	26.37
34	29.84	20.32	27.64
40	33.65	24.13	31.45
50	40.00	30.48	37.80
52	41.27	31.75	39.07
60	46.35	36.83	44.15
68	51.43	41.91	49.23
80	59.05	49.53	56.85
100	71.75	62.23	69.55

4U CON 元化興業股份有限公司
 4U CON TECHNOLOGY INC.

DRAWING No.		APPROVED BY		UNLESS OTHERWISE SPECIFIED TOLERANCES ARE △ X. ±0.5 .X ±0.25 .XX ±0.15
06578		EMILY		
		CHECKED BY		
		HZF		
		DRAWING BY		
		CYP		
SCALE	NONE	REV.	A1	UNIT mm

△ A1	Modify Data	HZF	10/24/2015
△ A0	NEW RELEASE		
NO. REV.	REVISIONS	CHK	DATE