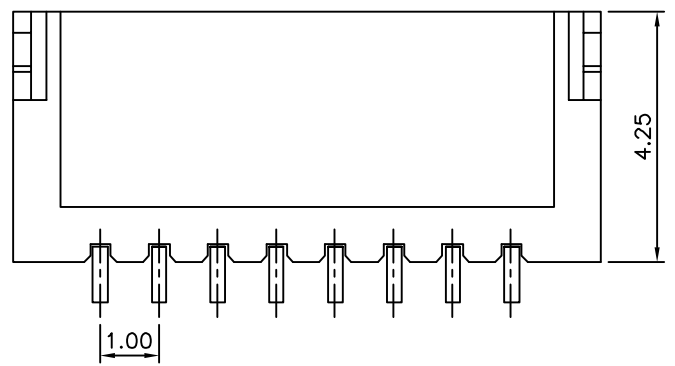
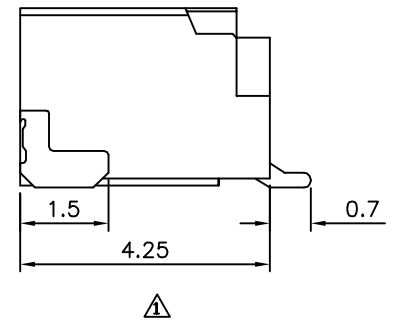
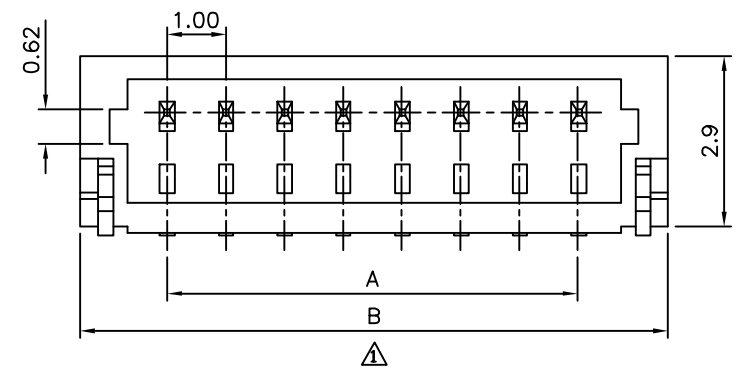
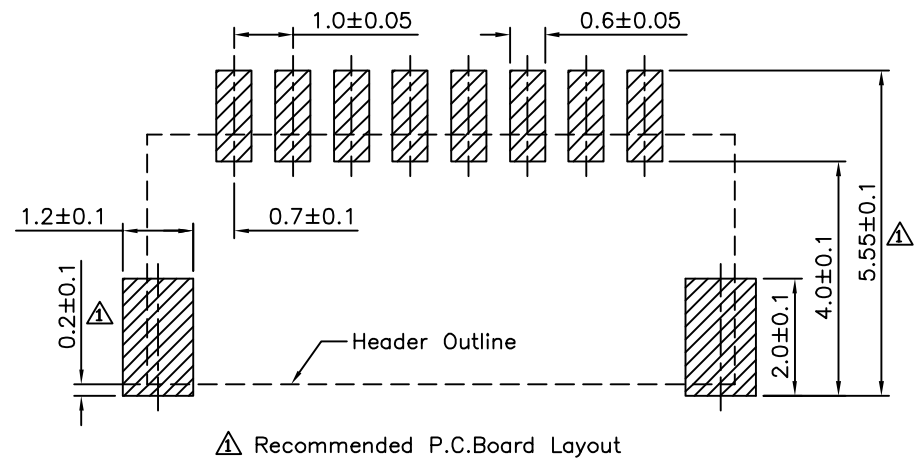


△ SPECIFICATION
 Current Rating:1.0A
 Voltage Rating:50V AC
 Dielectric Withstanding Voltage:500V AC/Minute
 Temperature Range:-40°C~+105°C
 Contact Resistance:20 Milliohms Max.
 Insulation Resistance:100 Megaohms Min.
 Contact:Phosphor Bronze,Tin Plated
 Insulator:PA6T(UL94V-0),Nature
 RoHS Compliant



△

| Pin | A | B |
|-----|------|------|
| * 2 | 1.0 | 4.0 |
| * 3 | 2.0 | 5.0 |
| * 4 | 3.0 | 6.0 |
| * 5 | 4.0 | 7.0 |
| * 6 | 5.0 | 8.0 |
| * 7 | 6.0 | 9.0 |
| * 8 | 7.0 | 10.0 |
| * 9 | 8.0 | 11.0 |
| *10 | 9.0 | 12.0 |
| *11 | 10.0 | 13.0 |
| *12 | 11.0 | 14.0 |
| *13 | 12.0 | 15.0 |
| *14 | 13.0 | 16.0 |
| *15 | 14.0 | 17.0 |
| 16 | 15.0 | 18.0 |
| 20 | 19.0 | 22.0 |

△ The Mark Of "*" Are Toolled Already

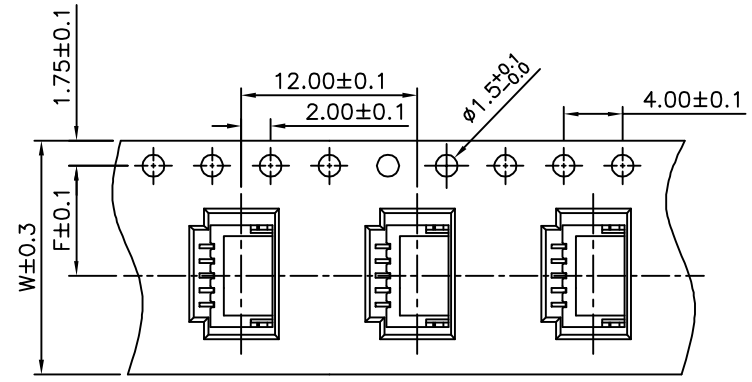
4UCON 元化興業股份有限公司
 4UCON TECHNOLOGY INC.

| | | | | |
|-------------|------|-----------------|----|---|
| DRAWING No. | | APPROVED BY | | UNLESS OTHERWISE SPECIFIED TOLERANCES ARE △ .X ±0.25 .XX ±0.15 ANG. UNIT mm |
| 07309 | | EMILY | | |
| | | CHECKED BY HZF | | |
| | | DRAWING BY SONG | | |
| SCALE | NONE | REV. | A2 | |

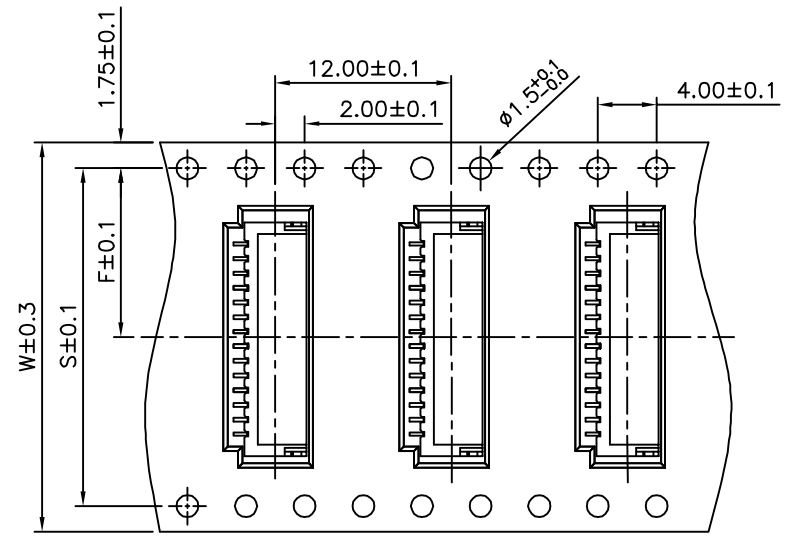
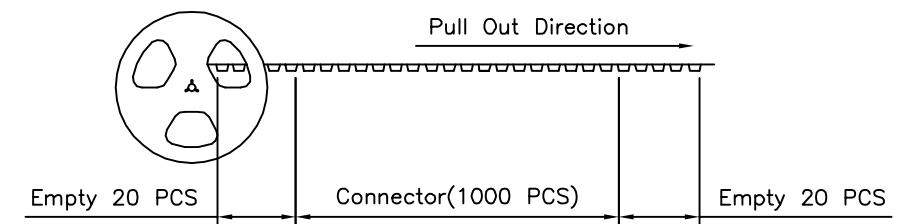
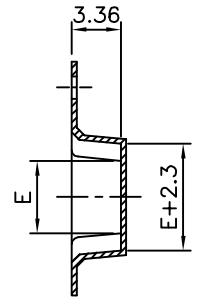
| NO. | REV. | REVISIONS | CHK | DATE |
|------|------|-------------|-----|------------|
| △ A2 | | Modify Data | HZF | 01/15/2013 |
| △ A1 | | Modify Data | HZF | 10/19/2011 |
| △ A0 | | NEW RELEASE | | |

SPECIFICATION

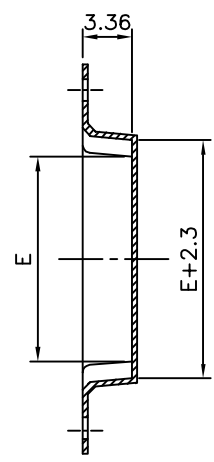
Q'ty:1000 PCS/Reel
RoHS Compliant



2~13 Contacts



14~16,20 Contacts



| Pin | W | F | S | E |
|-----|------|------|------|------|
| *02 | 16.0 | 7.5 | | 2.0 |
| *03 | 16.0 | 7.5 | | 3.0 |
| *04 | 16.0 | 7.5 | | 4.0 |
| *05 | 16.0 | 7.5 | | 5.0 |
| *06 | 24.0 | 11.5 | | 6.0 |
| *07 | 24.0 | 11.5 | | 7.0 |
| *08 | 24.0 | 11.5 | | 8.0 |
| *09 | 24.0 | 11.5 | | 9.0 |
| *10 | 24.0 | 11.5 | | 10.0 |
| *11 | 24.0 | 11.5 | | 11.0 |
| *12 | 24.0 | 11.5 | | 12.0 |
| *13 | 24.0 | 11.5 | | 13.0 |
| *14 | 32.0 | 14.2 | 28.4 | 14.0 |
| *15 | 32.0 | 14.2 | 28.4 | 15.0 |
| 16 | 32.0 | 14.2 | 28.4 | 16.0 |
| 20 | 44.0 | 20.2 | 40.4 | 20.0 |

△ The Mark Of "*" Are Tooled Already

4UCON 元化興業股份有限公司
4UCON TECHNOLOGY INC.

| | | | | |
|-------------|------|-------------|----|--|
| DRAWING No. | | APPROVED BY | | UNLESS OTHERWISE SPECIFIED TOLERANCES ARE △ .X ±0.25 .XX ±0.15 ANG. |
| 07309 | | EMILY | | |
| | | CHECKED BY | | |
| | | HZF | | |
| | | DRAWING BY | | |
| | | SONG | | |
| SCALE | NONE | REV. | A2 | UNIT mm |

| | | | | |
|------|------|-------------|-----|------------|
| NO. | REV. | REVISIONS | CHK | DATE |
| △ A2 | | Modify Data | HZF | 01/15/2013 |
| △ A1 | | Modify Data | HZF | 10/19/2011 |
| △ A0 | | NEW RELEASE | | |