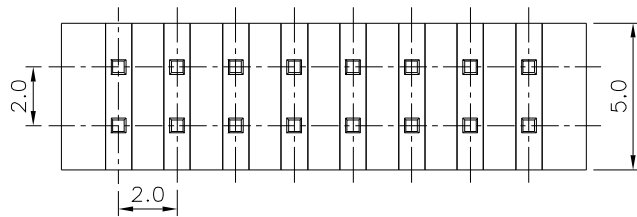
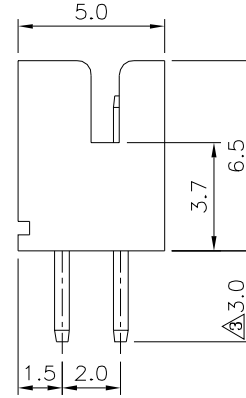
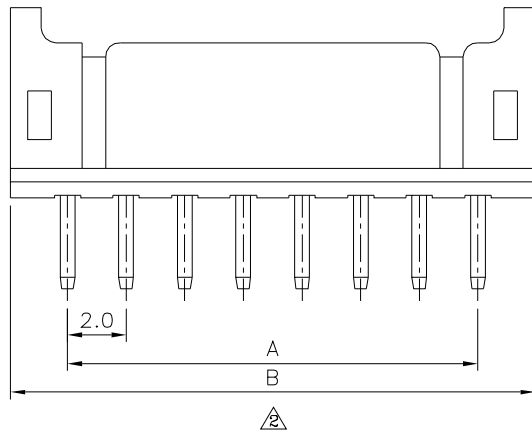
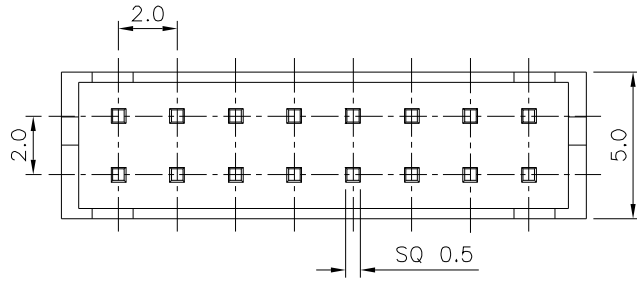


Recommended P.C.B. Layout



△ SPECIFICATION

Current Rating:2A AC/DC
 Voltage Rating:250V AC/DC
 Operation Temperature:-25°C~+85°C
 Contact Resistance:20 Milliohms Max.
 Insulation Resistance:1000 Megohms Min.
 Terminal:Brass,Tin Plated
 Insulator:PA66+G.F.(UL94V-0)
 RoHS Compliant

Pos.	A	B
4	2.0	6.0
6	4.0	8.0
8	6.0	10.0
10	8.0	12.0
12	10.0	14.0
14	12.0	16.0
16	14.0	18.0
18	16.0	20.0
20	18.0	22.0
22	20.0	24.0
24	22.0	26.0
26	24.0	28.0
28	26.0	30.0
30	28.0	32.0
32	30.0	34.0
34	32.0	36.0
40	38.0	42.0

4UCON

元化興業股份有限公司
 4UCON TECHNOLOGY INC.

DRAWING No.

09735

APPROVED BY EMILY

CHECKED BY HZF

DRAWING BY HAO

REV. A3

UNLESS OTHERWISE SPECIFIED TOLERANCES ARE
 .X ±0.35
 .XX ±0.25
 ANG.



NO.	REV.	REVISIONS	CHK	DATE
△A3		Modify Data	HZF	03/28/2015
△A2		Modify Data	HZF	06/18/2010
△A1		Modify Data	INGRID	03/28/2008
△A0		NEW RELEASE		

SCALE NONE