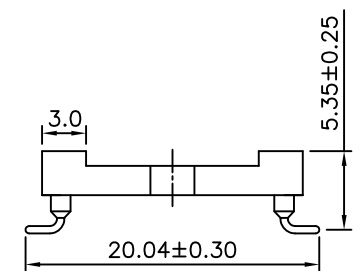
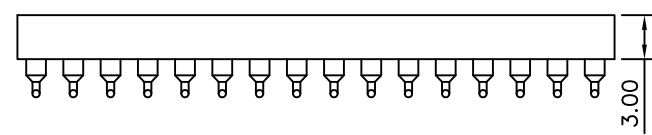
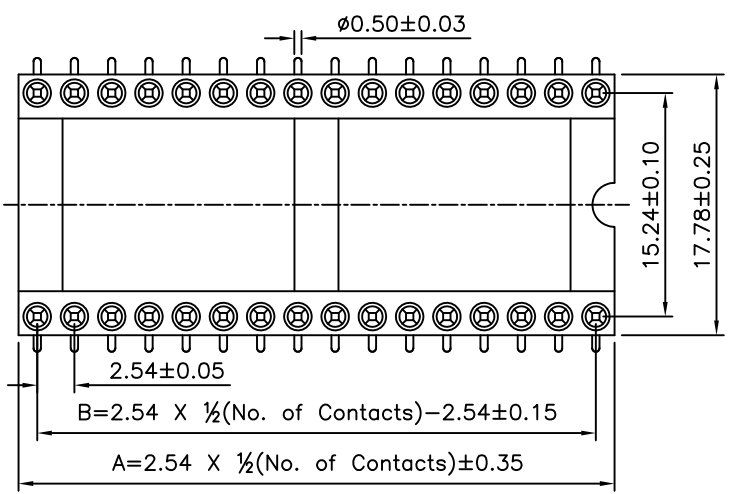


P.C.B Layout



SPECIFICATION

Current Rating:3Amps/Contact Max.
 Contact Resistance:4Milliohms Contact
 Insulation Resistance:1000Megohms At 100V
 Operating Voltage:60VAC/DC
 Average Insertion Force With Steel Pin Of
 ø0.43mm:<250g
 Average Withdrawal Force With Steel Pin Of
 ø0.43mm:>25g Min
 Mechanical Life Cycle:Min.200
 Operating Temperatures:Gold Plated:-55°C~+105°C
 Tin Plated:-40°C~+105°C
 Soldering Temperature:+260°C 10S Max
 Pin(Outer Sleeve):Brass Machined CuZn38Pb2
 Clip(Contact 4 Finger):Phosphor Bronze Beat Treated
 Plating(Outer Sleeve):Tin Plated:Ni & Sn
 Plating(Contact):Ni,Gold Plated
 Insulator(Black):Glass Filled Thermoplastic Polyester
 UL94V-0

No. Of Positions	Dim A	Dim B
24	30.48	27.94
28	35.56	33.02
32	40.64	38.10
40	50.80	48.26
48	60.96	58.42

4UCON 元化興業股份有限公司
 4UCON TECHNOLOGY INC.

DRAWING No.		APPROVED BY		UNLESS OTHERWISE SPECIFIED TOLERANCES ARE X. ±0.35 .X ±0.20 .XX ±0.15 XXX ±0.05 ANG: ±5°
10175		MEI		
		CHECKED BY	HZF	
		DRAWING BY	JLT	
SCALE	NONE	REV.	A0	UNIT mm

NO.	REV.	DESCRIPTION	CHK	DATE
△	A0	NEW RELEASE	HZF	05/03/2007
		REVISIONS		