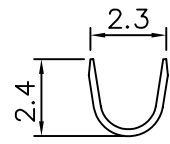
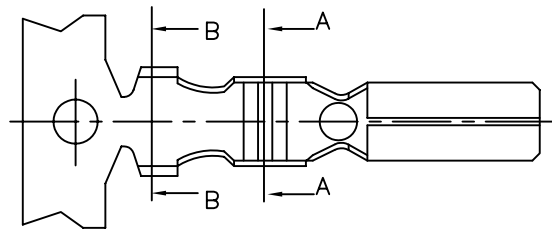
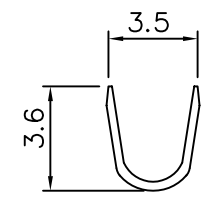


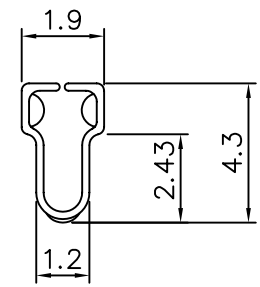
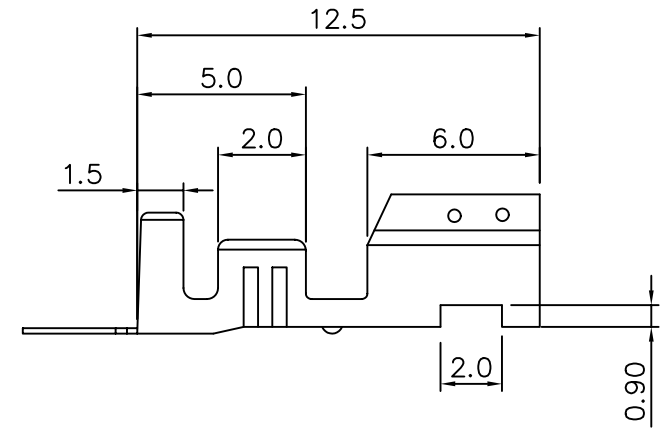
SPECIFICATIONS
 Current Rating: 7A
 Voltage Rating: 250V AC, DC
 Contact Resistance: Initial 10 milliohms Max.
 Wire Range : AWG #18~22
 Material: Brass, Tin Plated



Section A-A



Section B-B



4UCON 元化興業股份有限公司
 4UCON TECHNOLOGY INC.

DRAWING No.
 10463

APPROVED BY MEI
 CHECKED BY BECKY
 DRAWING BY HZF

UNLESS OTHERWISE SPECIFIED TOLERANCES ARE
 .X ±0.40
 .XX ±0.25
 .XXX ±0.08

SCALE NONE

REV. A0

UNIT mm

NO. REV.

A0 NEW RELEASE REVISIONS

MEI DATE

NO.	REV.	REVISIONS	CHK	DATE