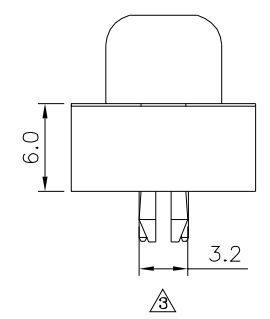
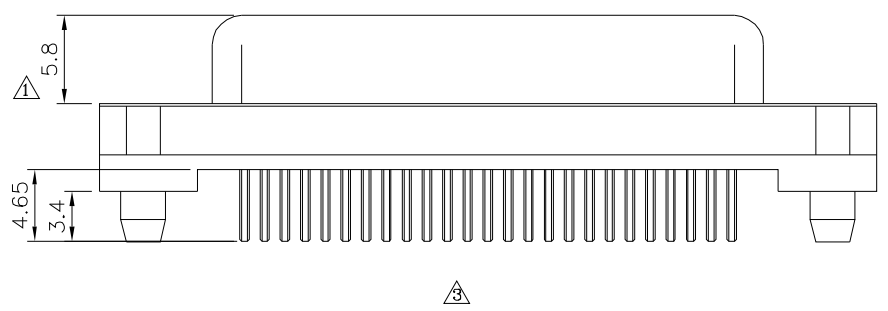
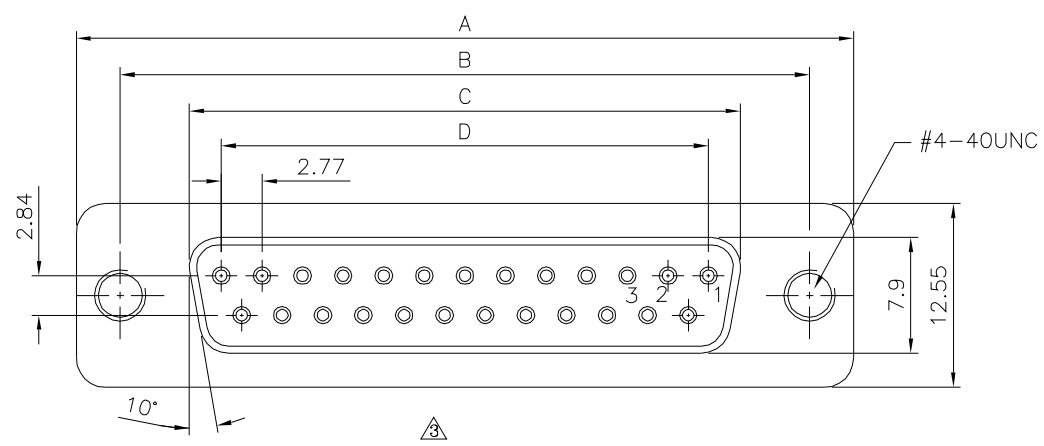


Recomended PCB Layout

**△△ SPECIFICATION**

Current Rating:3 Amp  
 Voltage Rating:250V AC/RMS 60Hz  
 Contact Resistance:20 Milliohms Max. At 1 Amp DC  
 Insulation Resistance:1000 Megaohms At 500V DC  
 Withstand Voltage:1000V AC/RMS 60Hz  
 For 1 Minute  
 Insulator:PBT+G.F.(UL94V-0),Black  
 Contact:Brass,Gold Plated On Contact Area,Tin  
 Plated On Solder Tails,Over Nickel  
 Shell:Steel,Tin Plated Over Copper  
 Clinch Nut:Brass,Nickel Plated  
 Boardlock:Brass,Tin Plated  
 RoHS Compliant



△△ Pin	A	B	C	D
09	30.81	24.99	16.33	11.08
15	39.20	33.30	24.70	19.39
25	53.05	47.04	38.40	33.24
37	69.40	63.50	54.80	49.86

**4UCON** 元化興業股份有限公司  
 4UCON TECHNOLOGY INC.

DRAWING No.		APPROVED BY		UNLESS OTHERWISE SPECIFIED TOLERANCES ARE X. ±0.38 X.* ±3* .X ±0.25 .X.* ±1.0* .XX ±0.13
10620		EMILY		
		CHECKED BY		
		HZF		
		DRAWING BY		UNIT mm
		SONG		
SCALE	NONE	REV.	B3	

NO.	REV.	REVISIONS	CHK	DATE
△	B3	Modify Data	HZF	06/28/2012
△	B2	Modify Data	HZF	06/07/2012
△	B1	Modify Data	INGRID	11/22/2007
△	B1	Modify Data	INGRID	11/22/2007
△	B0	NEW RELEASE	BECKY	06/06/2006