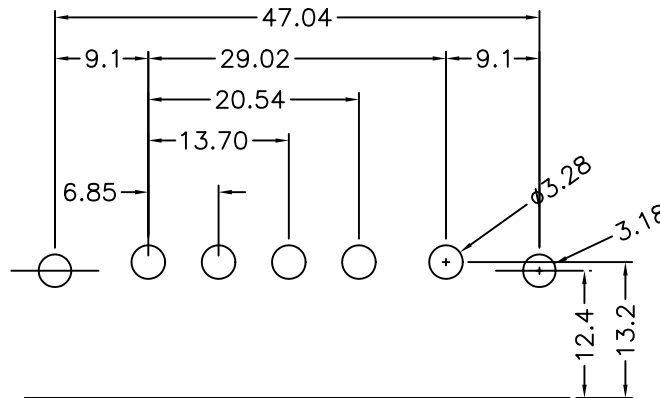
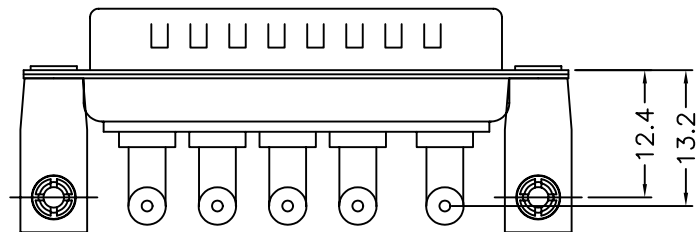


SPECIFICATIONS:

- Shell : steel , tin plated as standard.
- Insulator : Glass filled polyester UL 94V-0.
- Singal contact when applicable :
copper alloy please see ordering code for plating options.
- Standoff : Copper alloy , tin-lead over copper.
- Bucket : Steel , nickel plated.
- Rivnut : Copper alloy , nickel plated.
- Locking clipper : Copper alloy , tin-lead over copper.
- Center and outside contact :
copper alloy please see ordering code for plating options.
- Lock link : copper alloy , gold flash over nickel.
- High power contact current rating : 20 Amps.
- High power contact resistance : < 2.7 Milliohms
- Dielectric withstanding voltage : 1000VAC for one minute.
- Insulation resistance : >5000 Megohms
- Connector mating and unmating force : 17.0kgf max.
- Durability : 100 cycles.
- Operating temperature : -55°C~+125°C



PCB LAYOUT

4UCON 元化興業股份有限公司
4UCON TECHNOLOGY INC.

DRAWING No.
10638

APPROVED BY MEI
CHECKED BY BECKY
DRAWING BY HZF

UNLESS OTHERWISE SPECIFIED TOLERANCES ARE
.X
.XX ±0.30
ANG.

SCALE NONE

REV. A0

UNIT mm



NO. REV.

NEW RELEASE
REVISIONS

MEI
CHK DATE