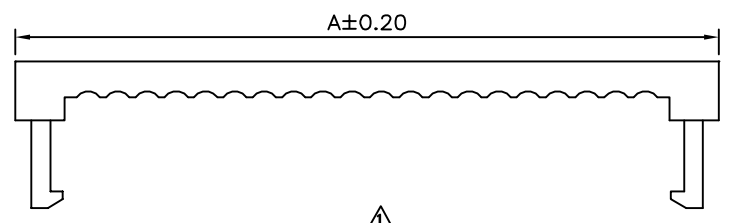
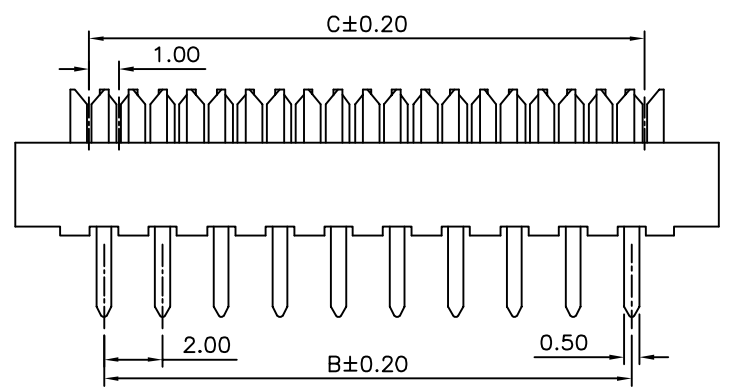


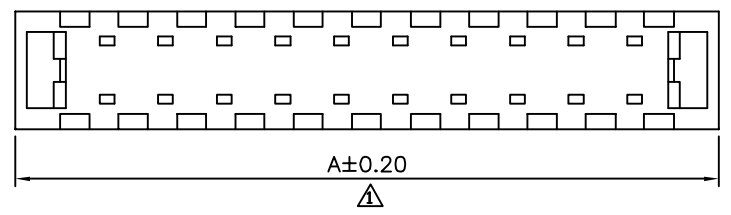
△ Recommended P.C.B. Layout



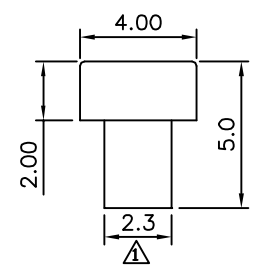
△



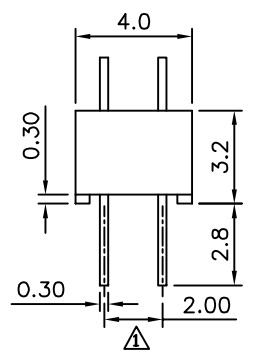
△



△



△



△

△ SPECIFICATION

Current Rating:1 Amp
 Withstanding Voltage:500V AC/Minute
 Contact Resistance:15 Milliohms Max.
 Insulation Resistance:1000 Megaohms Min. At DC 500V
 Operating Temperature:-40°C~+105°C
 Insulator:PBT+30%G.F.(UL94V-0)
 Contact:Copper Alloy,Gold Flash On DIP Area,
 Nickel Plated On IDC Area,Over Nickel
 RoHS Compliant

Pin	A	B	C	Pin	A	B	C
08	12.10	6.00	7.00	26	30.10	24.00	25.00
10	14.10	8.00	9.00	28	32.10	26.00	27.00
12	16.10	10.00	11.00	30	34.10	28.00	29.00
14	18.10	12.00	13.00	34	38.10	32.00	33.00
16	20.10	14.00	15.00	40	44.10	38.00	39.00
18	22.10	16.00	17.00	44	48.10	42.00	43.00
20	24.10	18.00	19.00	50	54.10	48.00	49.00
24	28.10	22.00	23.00	60	64.10	58.00	59.00

4UCON 元化興業股份有限公司
 4UCON TECHNOLOGY INC.

DRAWING No.		APPROVED BY		UNLESS OTHERWISE SPECIFIED TOLERANCES ARE △ .X ±0.2 .XX ±0.10 ANG.
11091		EMILY		
		CHECKED BY		
		HZF		
		DRAWING BY		
		HTP		
SCALE	NONE	REV.	A2	UNIT
				mm

NO.	REV.	REVISIONS	CHK	DATE
△ A2		Modify Data	HZF	03/26/2012
△ A1		Modify Data	HZF	12/16/2011
△ A0		NEW RELEASE	HZF	10/20/2009