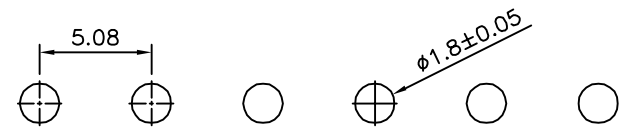
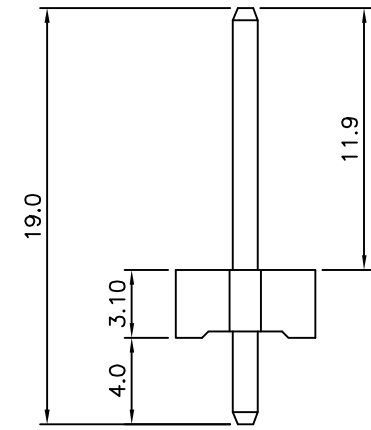
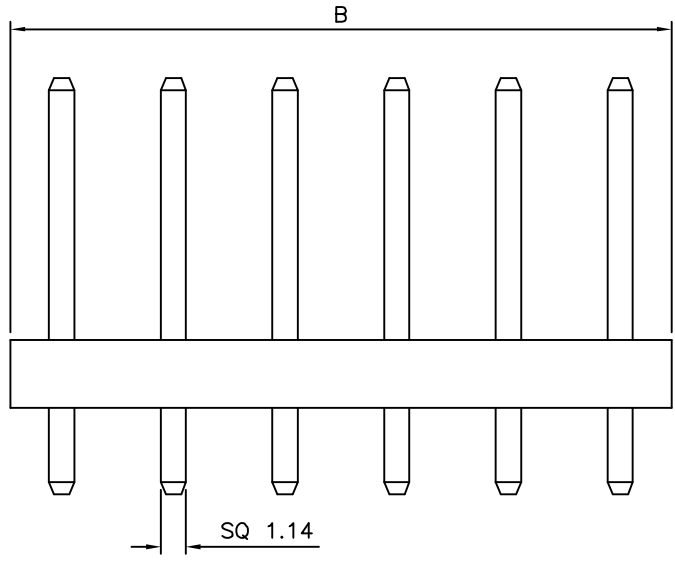
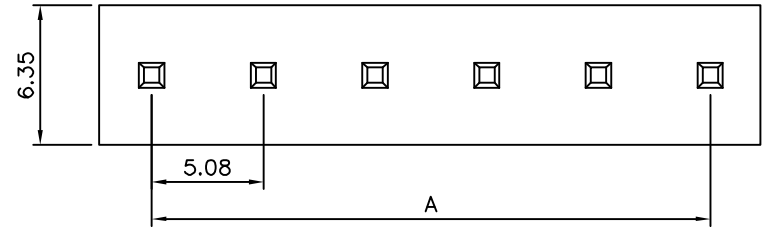


**SPECIFICATION**

Current Rating:5A AC/DC  
 Voltage Rating:250V AC/DC  
 Operating Temperature:-25°C~+85°C  
 Insulation Resistance:1000 Megaohms Min.  
 Withstanding Voltage:1500V AC/Minute  
 Contact Resistance:10 Milliohms Max.  
 Housing:PA66(UL94V-2),Nature  
 Contact:Brass,Tin Plated  
 RoHS Compliant



Recommended P.C.B. Layout(Component Side)



Pin	A	B
02	5.08	10.30
03	10.16	15.40
04	15.24	20.50
05	20.32	25.60
06	25.40	30.70
07	30.48	35.80
08	35.56	41.00
09	40.64	46.10
10	45.72	51.20

**4UCON** 元化興業股份有限公司  
 4UCON TECHNOLOGY INC.

DRAWING No.		APPROVED BY		UNLESS OTHERWISE SPECIFIED TOLERANCES ARE .X ±0.5 .XX ±0.3
11227		EMILY		
		CHECKED BY HZF		
		DRAWING BY HAO		
SCALE	NONE	REV.	A0	UNIT mm

NO.	REV.	REVISIONS	CHK	DATE
△ A0		NEW RELEASE	HZF	11/21/2014