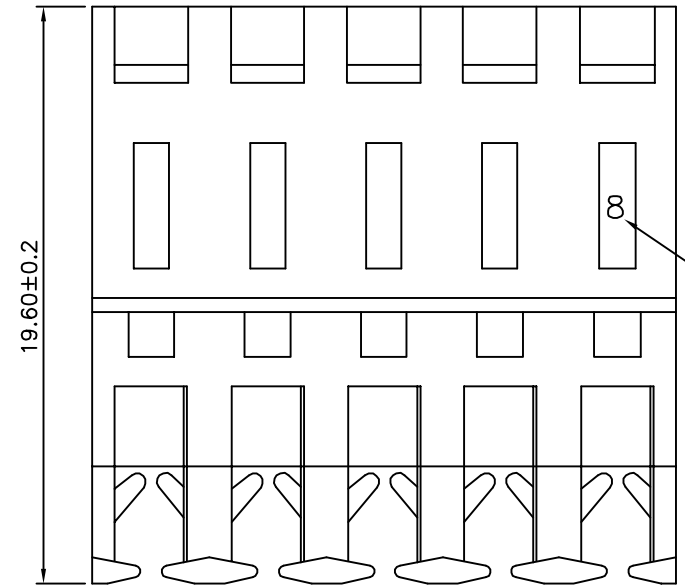
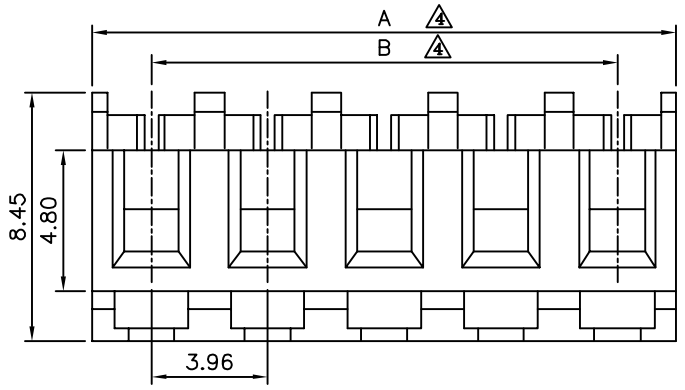
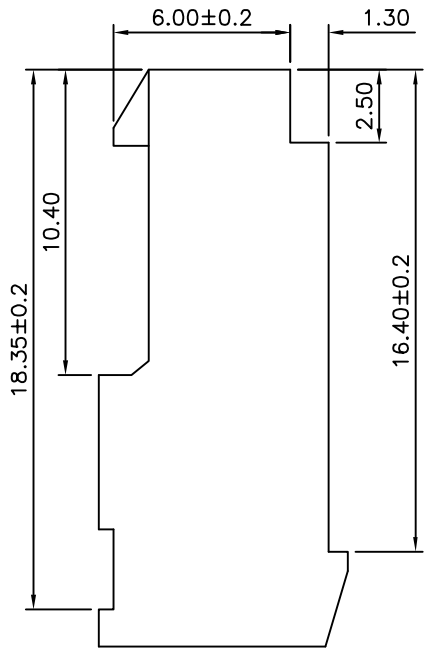


△△△ SPECIFICATION

Current Rating: 7A AC,DC
 Voltage Rating: 250V AC Max.
 Temperature Range: -40°C~+105°C
 Contact Resistance: Initial Value/10 Milliohms Max.
 After Environmental Testing/20 Milliohms Max.
 Insulation Resistance: 1000 Megaohms Min.
 Withstand Voltage: 1500V AC/Minute
 Applicable Wire: AWG#18~#26
 Mates With 1.14mm Pins
 Terminal Retention To Housing 8lbs(3.63Kg) Min.
 With Or Without Locking Ramp And Polariizing Rib
 Through And End Type
 Housing: PA66(UL94V-2),Nature
 Contact: Brass, Tin Plated Over Nickel
 RoHS Compliant



- Wire Gauge
 △ 8: #18 AWG
 0: #20 AWG
 2: #22 AWG
 4: #24 AWG
 6: #26 AWG



| △ Pin | A | B | Tol. | Pin | A | B | Tol. |
|-------|-------|-------|-------|-----|-------|-------|-------|
| 02 | 7.92 | 3.96 | ±0.15 | 14 | 55.44 | 51.48 | ±0.25 |
| 03 | 11.88 | 7.92 | | 15 | 59.40 | 55.44 | |
| 04 | 15.84 | 11.88 | | 16 | 63.36 | 59.40 | |
| 05 | 19.80 | 15.84 | ±0.20 | 17 | 67.32 | 63.36 | ±0.30 |
| 06 | 23.76 | 19.80 | | 18 | 71.28 | 67.32 | |
| 07 | 27.72 | 23.76 | | 19 | 75.24 | 71.28 | |
| 08 | 31.68 | 27.72 | ±0.25 | 20 | 79.20 | 75.24 | ±0.35 |
| 09 | 35.64 | 31.68 | | 21 | 83.16 | 79.20 | |
| 10 | 39.60 | 35.64 | | 22 | 87.12 | 83.16 | |
| 11 | 43.56 | 39.60 | ±0.25 | 23 | 91.08 | 87.12 | ±0.35 |
| 12 | 47.52 | 43.56 | | 24 | 95.04 | 91.08 | |
| 13 | 51.48 | 47.52 | | 25 | 99.00 | 95.04 | |

4UCON 元化興業股份有限公司
 4UCON TECHNOLOGY INC.

| | | | | |
|-------------|------|-------------|----|--|
| DRAWING No. | | APPROVED BY | | UNLESS OTHERWISE SPECIFIED TOLERANCES ARE △ .X ±0.20 △ .XX ±0.10 △ .XXX ±0.05 △ X ±2° △ X ±1° |
| 15579 | | EMILY | | |
| | | CHECKED BY | | |
| | | HZF | | UNIT mm |
| | | DRAWING BY | | |
| | | HAO | | |
| SCALE | NONE | REV. | A4 | |

| NO. | REV. | REVISIONS | CHK | DATE |
|------|------|--------------------------|--------|------------|
| △ A4 | | Modify Data | HZF | 05/08/2015 |
| △ A3 | | Modify Data | HZF | 12/24/2010 |
| △ A2 | | Modify Data | INGRID | 01/29/2008 |
| △ A1 | | Modify Spec. & Tolerance | SHIN | 10/19/2006 |
| △ A0 | | NEW RELEASE | BECKY | 12/09/2004 |