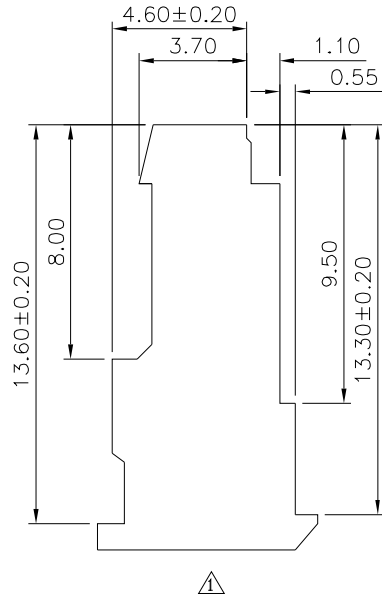
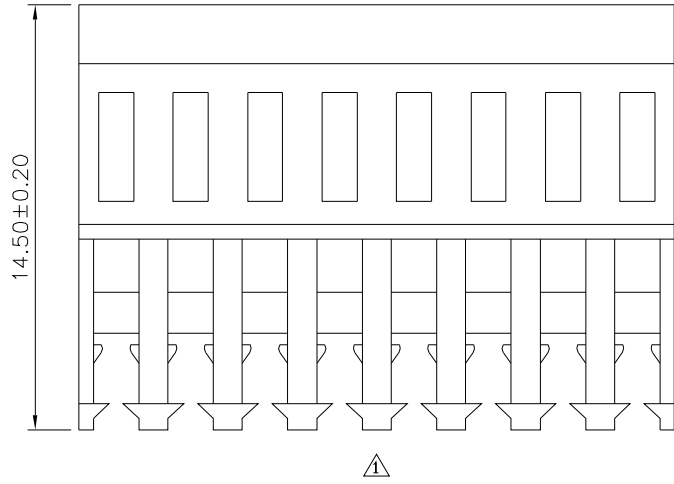
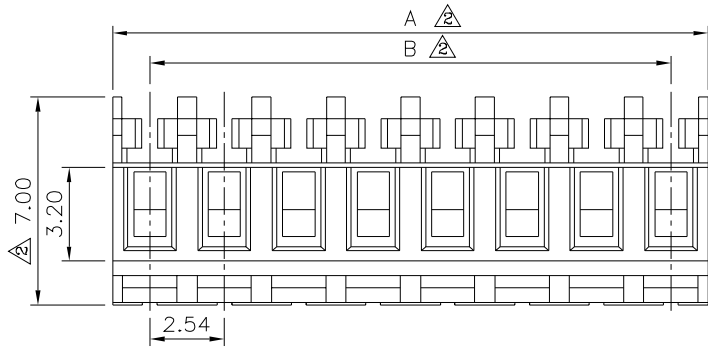


**△ SPECIFICATION**  
 Current Rating: 3A AC/DC  
 Voltage Rating: 250V AC Max.  
 Withstand Voltage: 1500V AC/Minute  
 Contact Resistance: Initial Value/10 Milliohms Max.  
 After Environmental Testing/20 Milliohms Max.  
 Insulation Resistance: 1000 Megaohms Min.  
 Temperature Range: -40°C~+105°C  
 Insulator: PA66(UL94V-2), Nature  
 Contact: Brass, Tin Plated  
 Applicable Wire: AWG#22~#28  
 Mates With 0.64mm Pins  
 Terminal Retention To Housing 6.6 lbs Min.  
 RoHS Compliant



△ Pin	A	B	Tol.	Pin	A	B	Tol.
2	5.08	2.54	±0.20	16	40.64	38.10	±0.30
3	7.62	5.08		17	43.18	40.64	
4	10.16	7.62		18	45.72	43.18	
5	12.70	10.16		19	48.26	45.72	
6	15.24	12.70	±0.25	20	50.80	48.26	±0.35
7	17.78	15.24		21	53.34	50.80	
8	20.32	17.78		22	55.88	53.34	
9	22.86	20.32		23	58.42	55.88	
10	25.40	22.86	±0.30	24	60.96	58.42	±0.38
11	27.94	25.40		25	63.50	60.96	
12	30.48	27.94		26	66.04	63.50	
13	33.02	30.48		27	68.58	66.04	
14	35.56	33.02		28	71.12	68.58	
15	38.10	35.56					

**4UCON** 元化興業股份有限公司  
 4UCON TECHNOLOGY INC.

DRAWING No.		APPROVED BY		UNLESS OTHERWISE SPECIFIED TOLERANCES ARE .X ±0.20 .XX ±0.10 .XXX ±0.05 X° ±2° .X° ±1°
15906		MEI		
		CHECKED BY		
		HZF		
		DRAWING BY		UNIT mm
		CYP		
SCALE	NONE	REV.	A2	

NO.	REV.	REVISIONS	CHK	DATE
△2	A2	Modify Data	HZF	02/26/2018
△1	A1	Modify Data	HZF	03/01/2011
△0	A0	NEW RELEASE	BECKY	12/09/2004