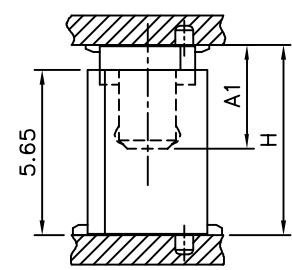
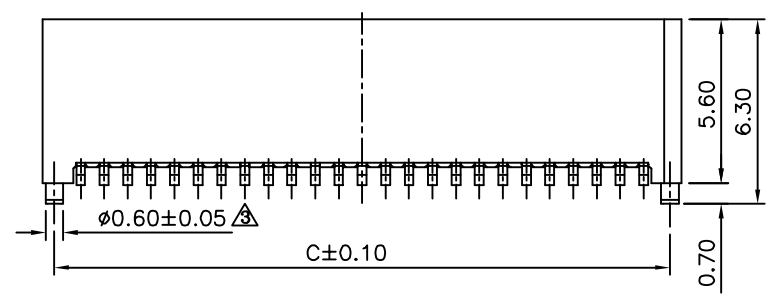
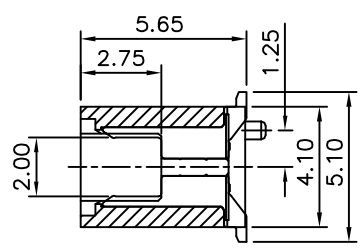
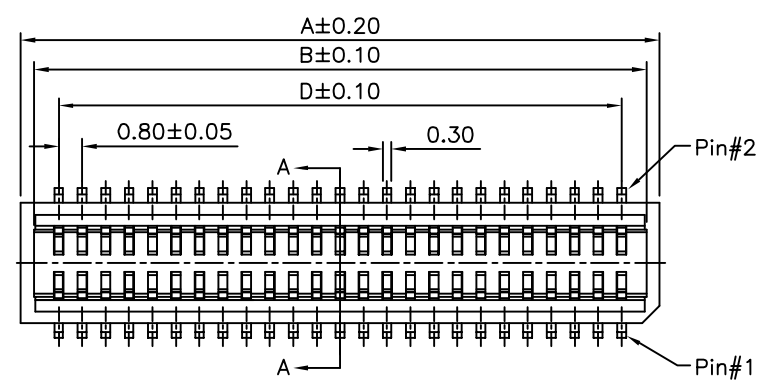


- △ SPECIFICATION**
- 1.General Characteristics:**  
0.8mm Board To Board Male XFP SMT 180°  
With Post Stacking Height=6.5/7.0mm
  - 2.Material&Finish:**  
△ Insulator:PA46(UL94V-0),Beige  
△ Conact:Phosphor Bronze,Gold Plated Over Nickel
  - 3.Electrical Characteristics:**  
Current Rating:0.5A AC/DC  
Voltage Rating:100V AC/DC  
Insulation Resistance:100 Megaohms Min.  
Withstanding Voltage:500V(RMS) For One Minute  
Contact Resistance:40 Milliohms Max.
  - 4.Environmental Characteristics:**  
Operation Temperature Range:-40°C~+105°C
  - 5.RoHS Compliant**



| Series No.(Plug) | Series No.(Socket) | A1   | H    |
|------------------|--------------------|------|------|
| 1635             | 1636               | 3.55 | 6.50 |
| 1635             | 1649               | 4.05 | 7.00 |

| Pin | A     | B     | C     | D     | Pin | A     | B     | C     | D     |
|-----|-------|-------|-------|-------|-----|-------|-------|-------|-------|
| 10  | 6.20  | 4.90  | 5.00  | 3.20  | 34  | 15.80 | 14.50 | 14.60 | 12.80 |
| 12  | 7.00  | 5.70  | 5.80  | 4.00  | 36  | 16.60 | 15.30 | 15.40 | 13.60 |
| 14  | 7.80  | 6.50  | 6.60  | 4.80  | 38  | 17.40 | 16.10 | 16.20 | 14.40 |
| 16  | 8.60  | 7.30  | 7.40  | 5.60  | 40  | 18.20 | 16.90 | 17.00 | 15.20 |
| 18  | 9.40  | 8.10  | 8.20  | 6.40  | 50  | 22.20 | 20.90 | 21.00 | 19.20 |
| 20  | 10.20 | 8.90  | 9.00  | 7.20  | 60  | 26.20 | 24.90 | 25.00 | 23.20 |
| 22  | 11.00 | 9.70  | 9.80  | 8.00  | 68  | 29.40 | 28.10 | 28.20 | 26.40 |
| 24  | 11.80 | 10.50 | 10.60 | 8.80  | 70  | 30.20 | 28.90 | 29.00 | 27.20 |
| 26  | 12.60 | 11.30 | 11.40 | 9.60  | 80  | 34.20 | 32.90 | 33.00 | 31.20 |
| 28  | 13.40 | 12.10 | 12.20 | 10.40 | 90  | 38.20 | 36.90 | 37.00 | 35.20 |
| 30  | 14.20 | 12.90 | 13.00 | 11.20 | 100 | 42.20 | 40.90 | 41.00 | 39.20 |
| 32  | 15.00 | 13.70 | 13.80 | 12.00 |     |       |       |       |       |

**4UCON** 元化興業股份有限公司  
4UCON TECHNOLOGY INC.

DRAWING No. 19146

APPROVED BY EMILY  
CHECKED BY HZF  
DRAWING BY HAO

SCALE NONE REV. A3

UNLESS OTHERWISE SPECIFIED TOLERANCES ARE  
.X ±0.20  
.XX ±0.15

UNIT mm

| NO.  | REV. | REVISIONS   | CHK   | DATE       |
|------|------|-------------|-------|------------|
| △ A3 |      | Modify Data | HZF   | 09/30/2014 |
| △ A2 |      | Modify Data | HZF   | 08/12/2011 |
| △ A1 |      | Modify Data | HZF   | 12/25/2009 |
| △ A0 |      | NEW RELEASE | BECKY | 02/17/2005 |