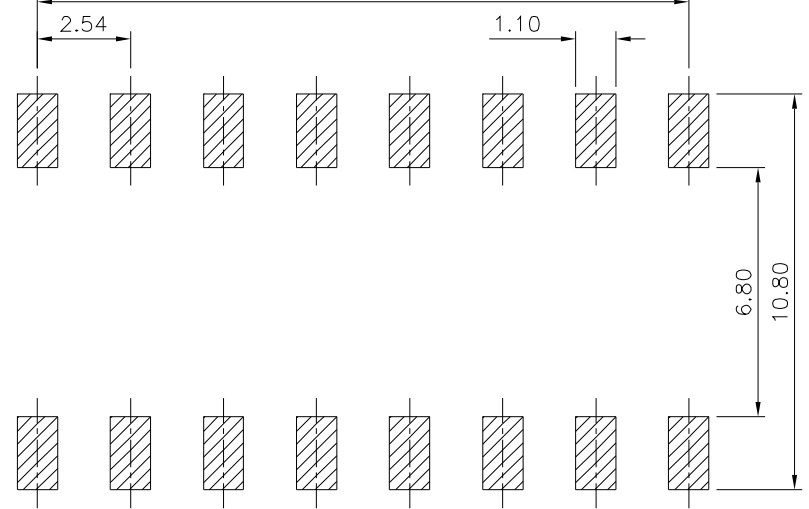


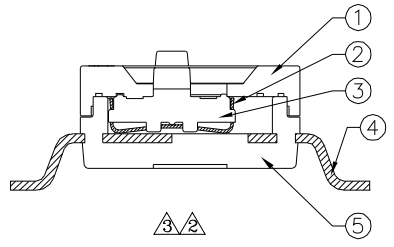
$B \pm 0.10 = 2.54 \times (\text{No. Of Contacts} / 2 - 1)$   $\triangle 3$



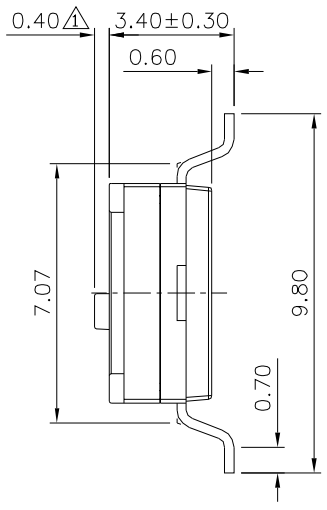
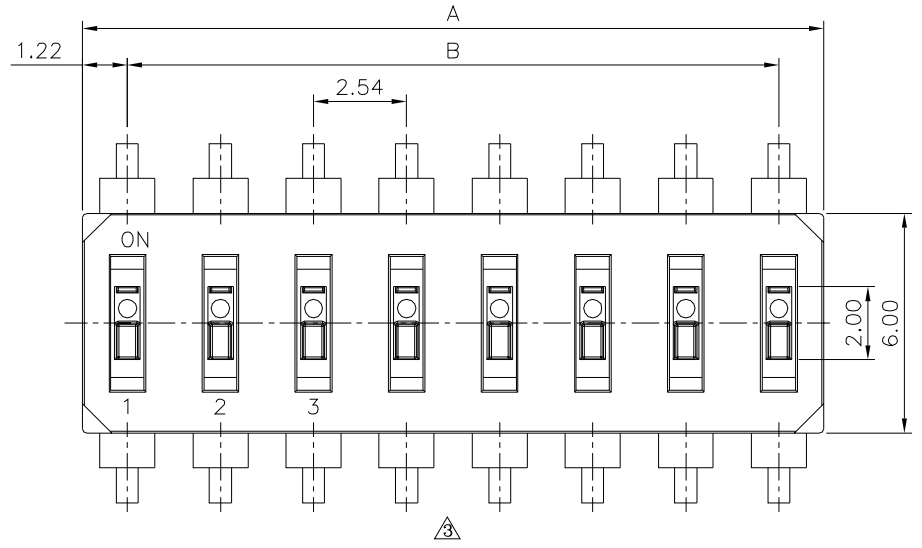
Recommended P.C.B. Layout

$\triangle 3$  SPECIFICATION

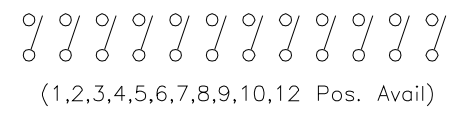
Current Range:  
 Non-Switching: 100mA 50V DC  
 Switching: 25mA 24V DC  
 Dielectric Withstanding Voltage: 500V AC For One Minute  
 Contact Resistance: 100 Milliohms Max.(Initial)  
 Insulation Resistance: 100 Megaohms Min.  
 At 500V DC, 60s ± 5s  
 Operation Temperature Range: -20°C ~ +85°C  
 Operation Force: 9.8N Max.  
 RoHS Compliant



Pin	A	B
01	2.44	
02	4.98	2.54
03	7.52	5.08
04	10.06	7.62
05	12.60	10.16
06	15.14	12.70
07	17.68	15.24
08	20.22	17.78
09	22.76	20.32
10	25.30	22.86
12	30.38	27.94



Schematic(Type)



No.	Description	Q'ty	Material	Remark
⑤	Base	1	PA9T,UL94V-0	Black
④	Terminal	1	Brass	Gold Plated Over Nickel
③	Actuator	*	LCP,UL94V-0	White
②	Contact	*	C7035	Gold Plated At Contact Area
①	Cover	1	PA9T,UL94V-0	Black

**4UCON** 元化興業股份有限公司  
 4UCON TECHNOLOGY INC.

DRAWING No.  $\triangle 3$   
 19493

APPROVED BY MEI  
 CHECKED BY HZF  
 DRAWING BY CYP  
 REV. B3

UNLESS OTHERWISE SPECIFIED TOLERANCES ARE  
 $\triangle 3$  .X ± 0.20  
 .XX ± 0.20  
 ANG.  
 UNIT mm

NO.	REV.	REVISIONS	CHK	DATE
$\triangle 3$	B3	Modify Data	HZF	07/04/2018
$\triangle 2$	B2	Modify Data	HZF	11/09/2010
$\triangle 1$	B1	Modify Data	HZF	11/24/2009
$\triangle 0$	B0	NEW RELEASE	INGRID	02/05/2008