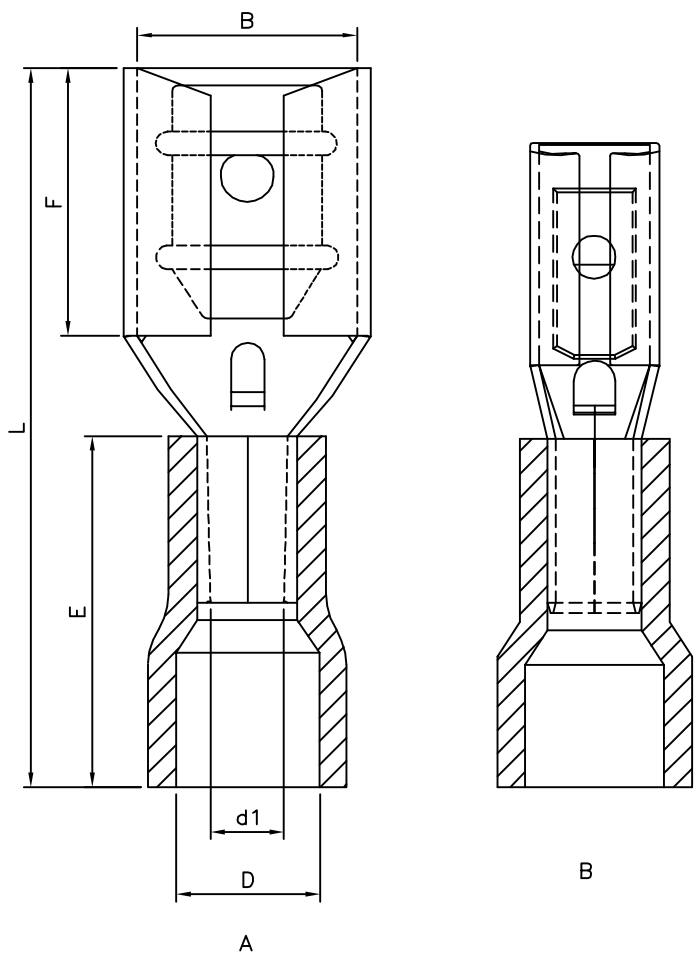


**SPECIFICATION**  
 Voltage Rating:300V Max. At 75°C  
 Current:

AWG	22	20	18	16	14
Amp Max.	3	4	7	10	15

Insulator:PVC  
 Material:Brass,Tin Plated Over Nickel  
 RoHS Compliant



Wire Range AWG/mm <sup>2</sup>	Color	△ Item No.	Nema Tab	B±0.20	F±0.30	L±1.00	E±0.60	D±0.30	d1±0.20
22~16 AWG 0.5~1.5mm <sup>2</sup>	Red	A 20377	0.8X4.8	5.0	6.5	19.0	10.0	4.0	1.7
16~14 AWG 1.5~2.5mm <sup>2</sup>	Blue	A 20349	0.8X4.8	5.0	6.5	19.0	10.0	4.5	2.3

**4UCON** 元化興業股份有限公司  
 4UCON TECHNOLOGY INC.

DRAWING No.		APPROVED BY		UNLESS OTHERWISE SPECIFIED TOLERANCES ARE .X ±0.38 .XX ±0.25 ANG.
20349		EMILY		
		CHECKED BY		
		HZF		
		DRAWING BY		
		GAO		
SCALE	NONE	REV.	A1	UNIT
				mm

NO.	REV.	REVISIONS	CHK	DATE
△ A1		Modify Data	HZF	09/12/2012
△ A0		NEW RELEASE	HZF	01/12/2012