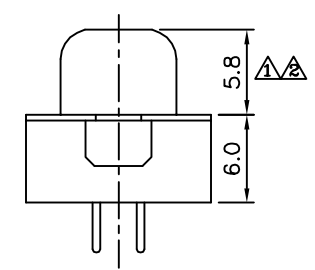
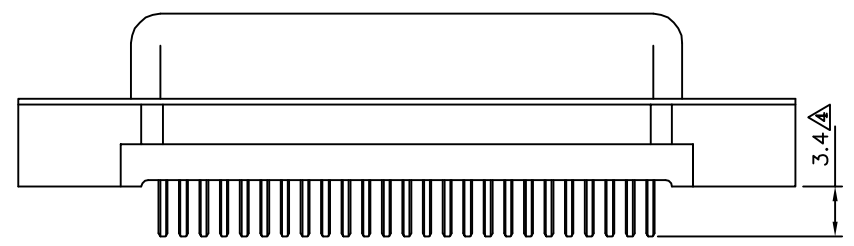
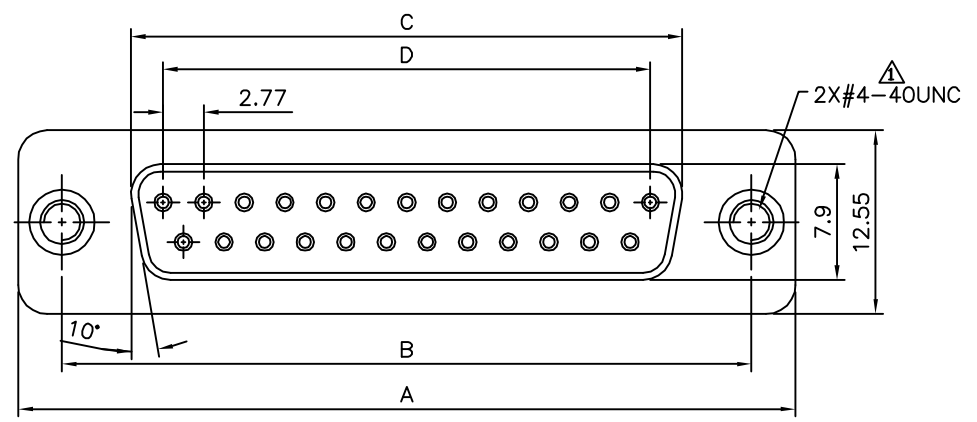


Recommended P.C.B. Layout

△△△ SPECIFICATION

Current Rating: 3 Amp
 Voltage Rating: 250V AC/RMS 60Hz
 Contact Resistance: 20 Milliohms Max. At 1 Amp DC
 Insulation Resistance: 1000 Megaohms At 500V DC
 Dielectric Withstanding Voltage: 1000V AC/RMS 60Hz For 1 Minute
 Insulator: PBT+G.F.(UL94V-0), Black
 Contact: Brass, Gold Plated On Contact Area, Tin Plated On Solder Tails, Over Nickel
 Shell: Steel, Tin Plated Over Copper
 Clinch Nut: Brass, Nickel Plated
 RoHS Compliant



△△△ Pin	A	B	C	D
09	30.81	24.99	16.33	11.08
15	39.20	33.30	24.70	19.39
25	53.05	47.04	38.40	33.24
37	69.40	63.50	54.80	49.86

4U CON 元化興業股份有限公司
 4U CON TECHNOLOGY INC.

DRAWING No.		APPROVED BY		UNLESS OTHERWISE SPECIFIED TOLERANCES ARE X. ±0.38 X.* ±3* .X ±0.25 .X.* ±1.0* .XX ±0.13
10619		MEI		
SCALE NONE		CHECKED BY HZF		
REV.	A4	DRAWING BY CYP		UNIT mm

NO.	REV.	REVISIONS	CHK	DATE
△ A4		Modify Data	HZF	04/15/2016
△ A3		Modify Data	HZF	10/21/2011
△ A2		Modify Dim.	INGRID	03/19/2008
△ A1		Modify Data	HZF	06/06/2007
△ A0		NEW RELEASE	BECKY	12/20/2005