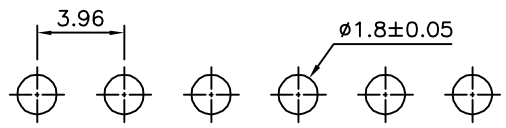
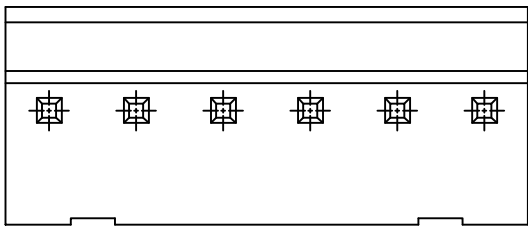
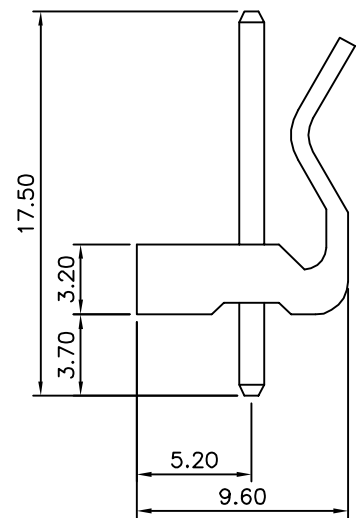
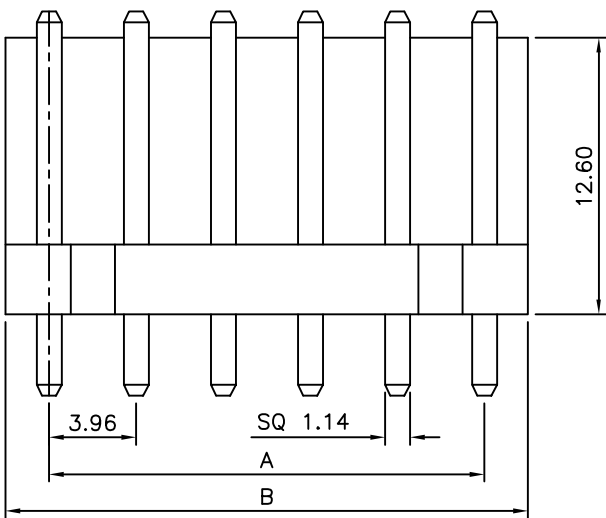


**SPECIFICATION**  
 Current Rating:5A AC/DC  
 Voltage Rating:250V AC/DC  
 Operation Temperature:-25°C~+85°C  
 Contact Resistance:10 Milliohms Max.  
 Insulation Resistance:1000 Megaohms Min.  
 Dielectric Withstanding Voltage:1500V AC/Minute  
 Insulator:PA66(UL94V-2),Nature  
 Contact:Brass,Tin Plated  
 RoHS Compliant



Recommended P.C.B. Layout



Pin	A	B
2	3.96	7.92
3	7.92	11.88
4	11.88	15.84
5	15.84	19.80
6	19.80	23.76
7	23.76	27.72
8	27.72	31.86
9	31.86	35.64
10	35.64	39.60
11	39.60	43.56
12	43.56	47.52
13	47.52	51.48
14	51.48	55.44
15	55.44	59.40
16	59.40	63.36
17	63.36	67.32
18	67.32	71.28
19	71.28	75.24
20	75.24	79.20

**4UCON** 元化興業股份有限公司  
 4UCON TECHNOLOGY INC.

DRAWING No.		APPROVED BY		UNLESS OTHERWISE SPECIFIED TOLERANCES ARE .X ±0.50 .XX ±0.35 ANG.
02157		EMILY		
		CHECKED BY		
		HZF		
		DRAWING BY		
		QQJ		
SCALE	NONE	REV.	B1	UNIT
				mm

NO.	REV.	REVISIONS	CHK	DATE
△	B1	Modify Data	HZF	10/04/2013
△	B0	NEW RELEASE	HZF	10/16/2010