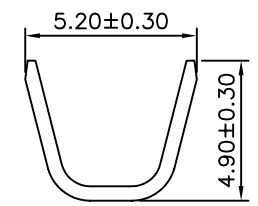
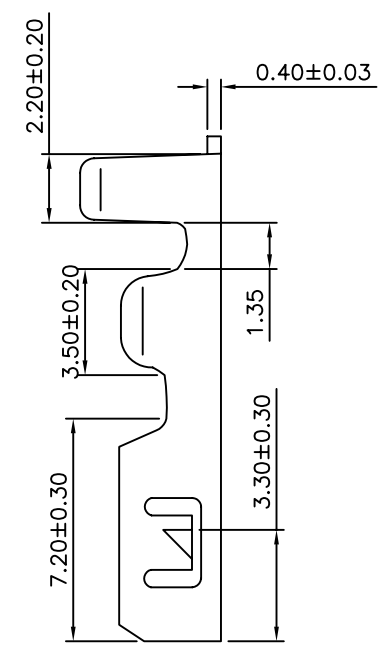
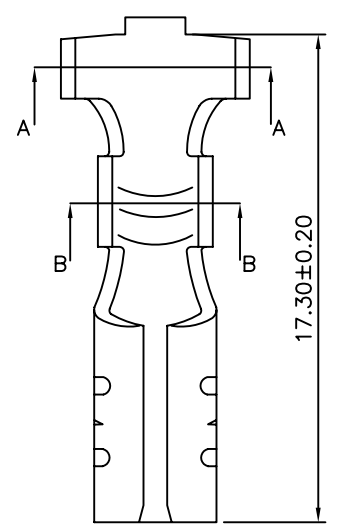
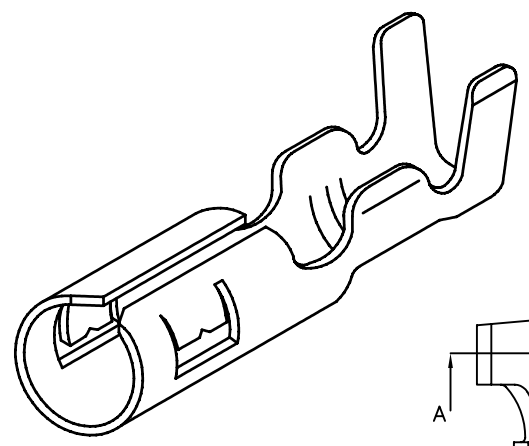
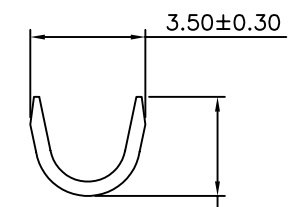


SPECIFICATIONS

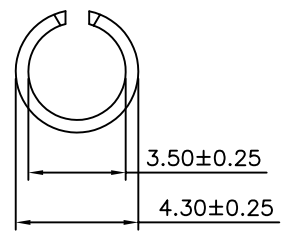
Material: Brass
 Applicable Wire: AWG#14-18
 Insulation O.D(mm): 3.60-2.90
 Standard Packing: 10000 Pcs
 Insertion Force: 3.5kg Max.
 Withdrawal Froce: 3.0kg Min.



sections A-A



sections B-B



4UCON 元化興業股份有限公司
 4UCON TECHNOLOGY INC.

DRAWING No.		APPROVED BY		UNLESS OTHERWISE SPECIFIED TOLERANCES ARE .X ±0.38 .XX ±0.25 ANG.
02491		MEI		
		CHECKED BY HZF		
		DRAWING BY PEGA		
SCALE	NONE	REV.	A0	UNIT mm

NO.	REV.	REVISIONS	CHK	DATE
△ A0		NEW RELEASE	HZF	05/08/2006