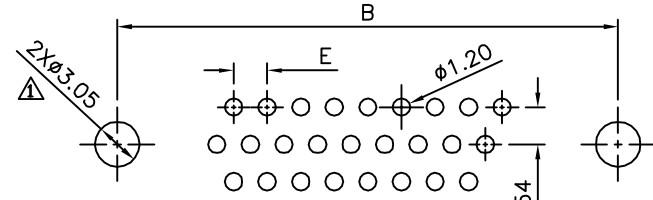
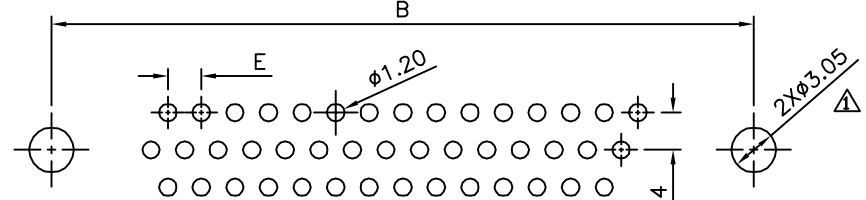
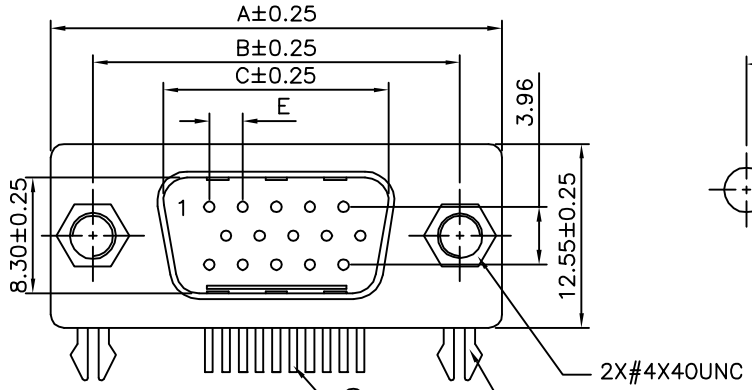


Recommended P.C.B. Layout
15P



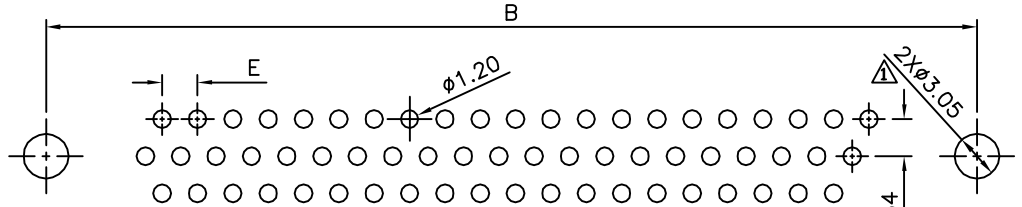
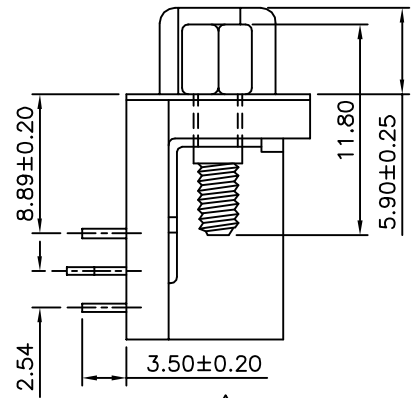
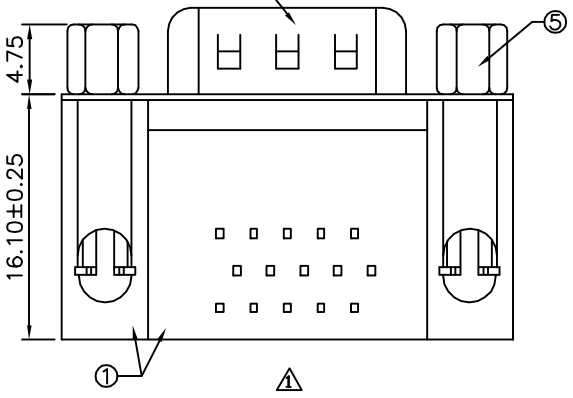
Recommended P.C.B. Layout
26P

△ SPECIFICATION
 Current Rating: 1A Max.
 Dielectric Withstanding Voltage: 500V AC For 1 Minute
 Contact Resistance: 30 Milliohms Max.
 Insulation Resistance: 1000 Megohms Min. At DC 500V
 Temperature Range: -55°C ~ +105°C
 RoHS Compliant



Recommended P.C.B. Layout
44P

Pin	A	B	C	E
15	30.80	25.00	16.92	2.29
26	39.20	33.32	25.25	2.29
44	53.05	47.04	38.96	2.29
62	69.40	63.50	55.42	2.41



Recommended P.C.B. Layout
62P

No.	Name	Q'ty	Material	Remark
⑤	Screw	2	Brass	Nickel Plated
④	"Z" Type Boardlock	2	Brass	Tin Plated
③	Front-Shell	1	Cold Rolled Steel	Nickel Plated
②	Contact	15~62	Brass	Gold Flash Over All, Over Nickel
①	Housing	2	PBT	UL94V-0, Black

4UCON 元化興業股份有限公司
4UCON TECHNOLOGY INC.

DRAWING No.		APPROVED BY		UNLESS OTHERWISE SPECIFIED TOLERANCES ARE .X ±0.30 .XX ±0.20 .XXX ±0.10 ANG. ±1°				
02638		MEI						
		CHECKED BY						
		DRAWING BY		SONG				
SCALE	NONE	REV.	B1	UNIT	mm			
						△ B1	Modify Data	HZF 12/21/2011
						△ B0	NEW RELEASE	HZF 11/13/2008
						NO. REV.	REVISIONS	CHK DATE