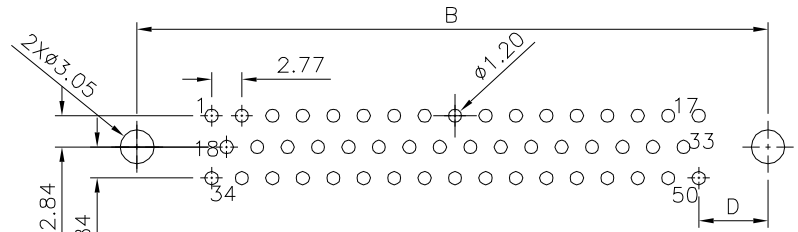


Recommended P.C.B. Layout

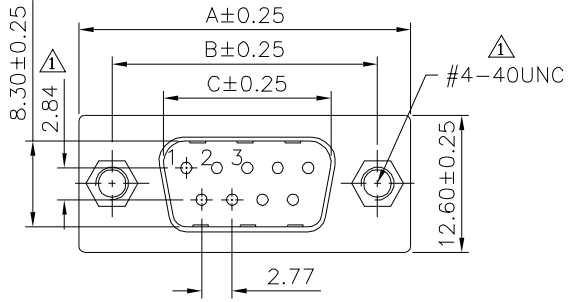


Recommended P.C.B. Layout

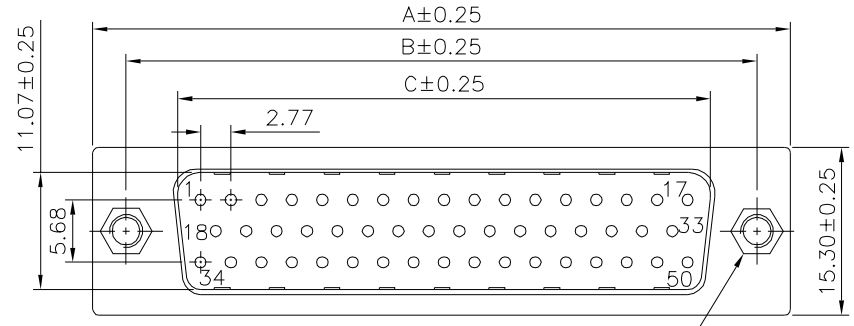
SPECIFICATION
 Current Rating:1A Max.
 Dielectric Withstanding Voltage:500V AC
 For 1 Minute
 Contact Resistance:30 Milliohms Max.
 Insulation Resistance:1000 Megohms Min.
 At DC 500V
 Temperature Range:-55°C~+105°C

① Housing:PBT(UL94V-0),White
 ② Contact:Brass,Gold Flash Over All,Over Nickel
 ③ Front Shell:Cold Rolled Steel,Nickel Plated Over Copper
 ④ Back Shell:Cold Rolled Steel,Tin Plated Over Copper
 ⑤ Boardlock Nut:Brass,H4.75X11.5,Tin Plated
 ⑥ Hex Screw:Brass,H5X10,Nickel Plated

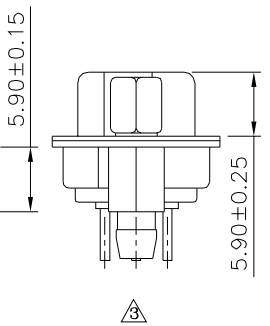
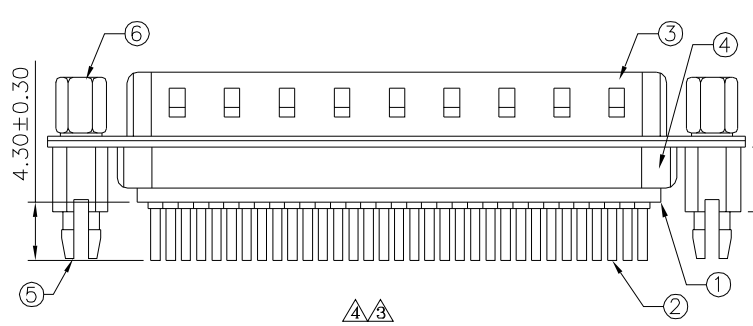
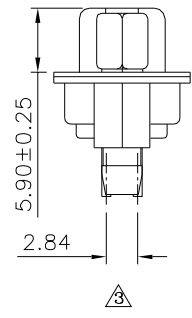
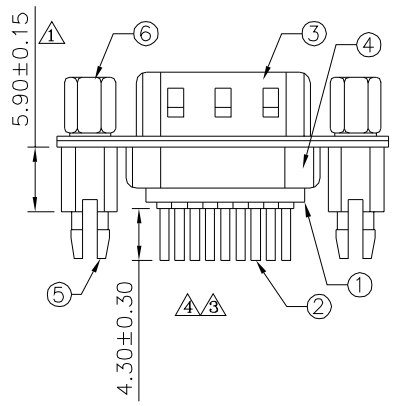
RoHS Compliant



09,15,25,37P



50P



Pin	A	B	C	D
09	30.80	25.00	16.92	6.96
15	39.20	33.32	25.25	6.96
25	53.05	47.04	38.96	6.90
37	69.40	63.50	55.42	6.82
50	67.10	61.00	52.81	8.34

4UCON 元化興業股份有限公司
 4UCON TECHNOLOGY INC.

DRAWING No.		APPROVED BY		UNLESS OTHERWISE SPECIFIED TOLERANCES ARE .X ±0.30 .XX ±0.20 .XXX ±0.10 ANG. ±1°	④ A4	Modify Data	HZF	03/09/2018
02863		MEI			③ A3	Modify Data	HZF	08/23/2012
		CHECKED BY			② A2	Modify Data	HZF	12/17/2009
SCALE		REV.		① A1	Modify Data	HZF	07/22/2009	
NONE		A4		① A0	NEW RELEASE			
REV.		A4		NO.REV.	REVISIONS	CHK	DATE	