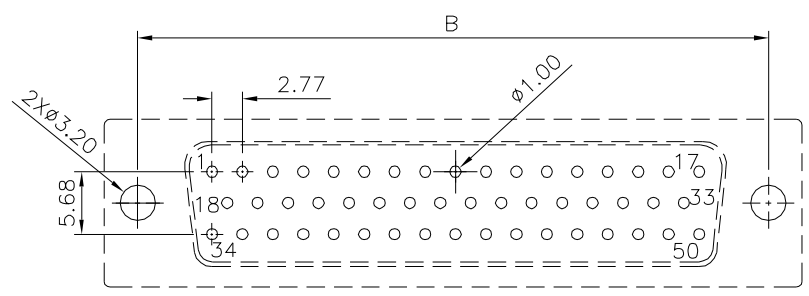
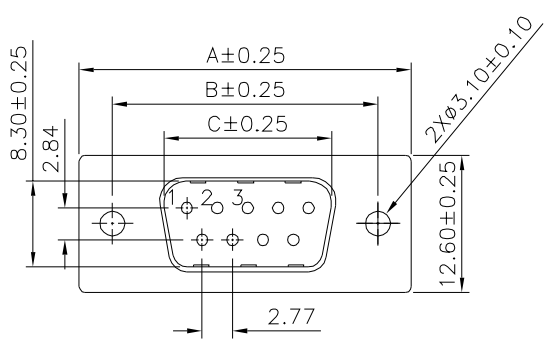


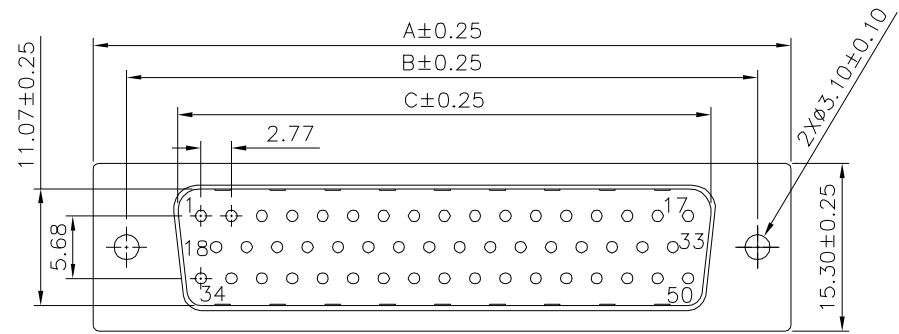
Recommended P.C.B. Layout



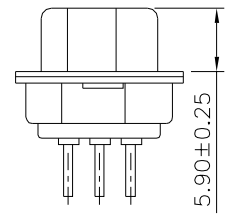
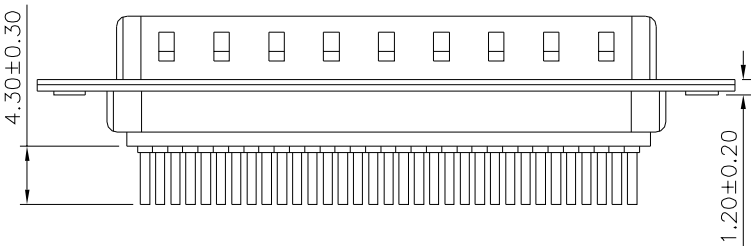
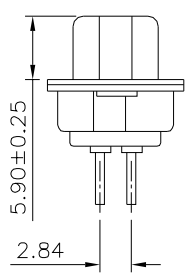
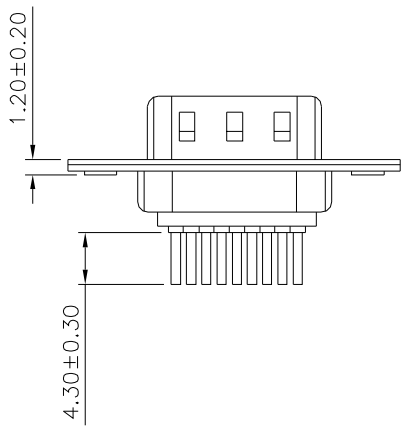
Recommended P.C.B. Layout



09,15,25,37P



50P



Pin	A	B	C
09	30.80	25.00	16.92
15	39.20	33.32	25.25
25	53.05	47.04	38.96
37	69.40	63.50	55.42
50	67.10	61.00	52.81

SPECIFICATION
 Current Rating:1A Max.
 Dielectric Withstanding Voltage:500V AC
 For 1 Minute
 Contact Resistance:30 Milliohms Max.
 Insulation Resistance:1000 Megaohms Min.
 At DC 500V
 Temperature Range:-55°C~+105°C
 Housing:PBT(UL94V-0),White
 Contact:Brass,Gold Flash Over All,Over Nickel
 ⚠ Front Shell:Cold Rolled Steel,Tin Plated
 Over Copper
 Back Shell:Cold Rolled Steel,Tin Plated Over
 Copper
 RoHS Compliant

4UCON 元化興業股份有限公司
 4UCON TECHNOLOGY INC.

DRAWING No.		APPROVED BY		UNLESS OTHERWISE SPECIFIED TOLERANCES ARE .X ±0.30 .XX ±0.20 .XXX ±0.10 ANG. ±1°
02867		EMILY		
		CHECKED BY HZF		
		DRAWING BY SONG		
SCALE	NONE	REV.	A1	UNIT mm

NO.	REV.	REVISIONS	CHK	DATE
△A1		Modify Data.	HZF	08/27/2014
△A0		NEW RELEASE	HZF	02/22/2012