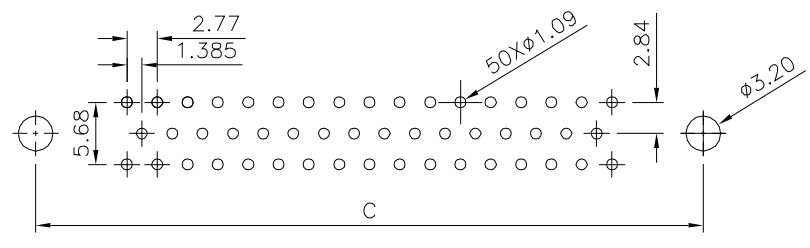
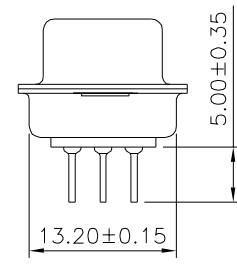
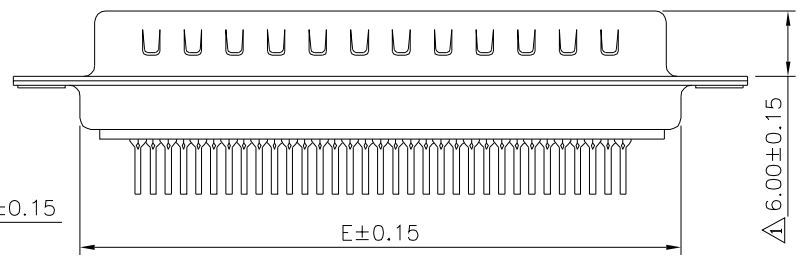
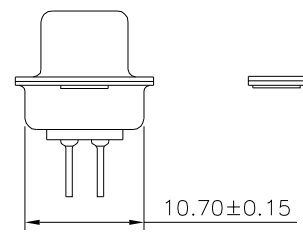
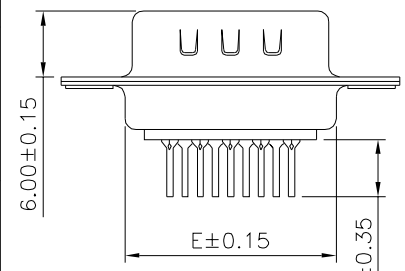
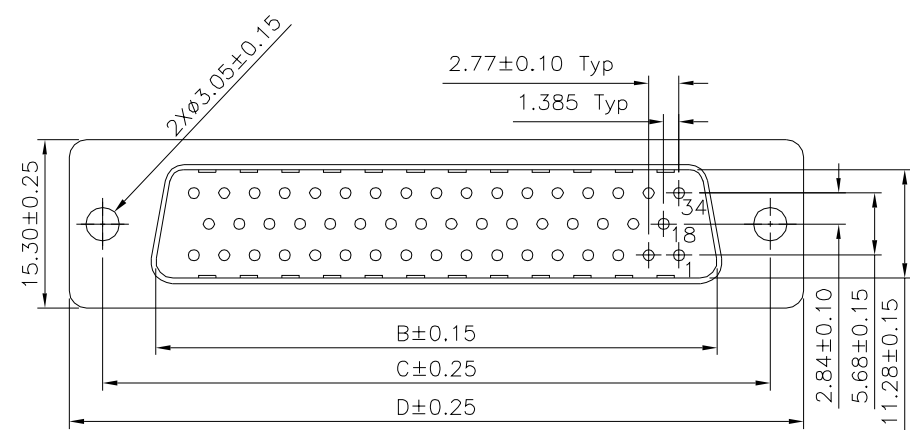
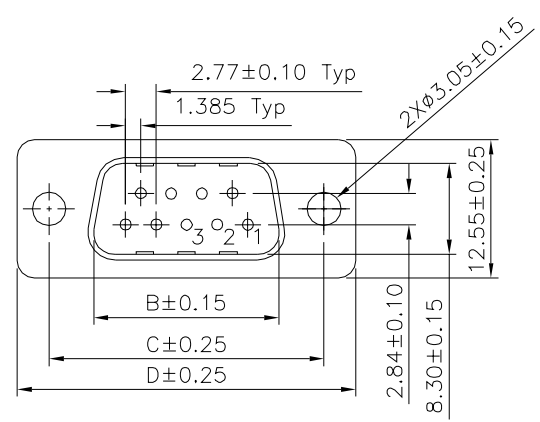


Recommended P.C.B. Layout



Recommended P.C.B. Layout

△ SPECIFICATION
 Current Rating: 1 Amps
 Withstanding Voltage: 500V (One Minute)
 Insulation Resistance: 1000 Megaohms Min. At 500V DC
 Contact Resistance: 30 Milliohms Max.
 Operation Temperature: -40°C ~ +85°C
 Insulator: PBT+30%G.F. (UL94V-0), White
 Contact: C2680, Gold Flash On Contact Area, Tin Plated On Solder Tails, Over Nickel
 Shell: SPCC, Front: Nickel Plated, Rear: Tin Plated
 RoHS Compliant



50 Pin

09,15,25,37 Pin

Pin	B	C	D	E
09	16.92	24.99	30.81	19.20
15	25.25	33.32	39.20	27.70
25	38.96	47.04	53.04	41.10
37	55.42	63.50	69.40	57.30
50	52.81	61.00	67.00	55.10

4UCON 元化興業股份有限公司
 4UCON TECHNOLOGY INC.

DRAWING No.		APPROVED BY		UNLESS OTHERWISE SPECIFIED TOLERANCES ARE .X ±0.38 .X' ±3" .XX ±0.25 .XX' ±1" .XXX ±0.05 .XXX' ±0.5"
02874		MEI		
		CHECKED BY HZF		
SCALE NONE		DRAWING BY CYP		UNIT mm
REV.		A1		NO. REV.

NO.	REV.	REVISIONS	CHK	DATE
△ A1		Modify Data	HZF	08/10/2017
△ A0		NEW RELEASE	HZF	07/06/2011