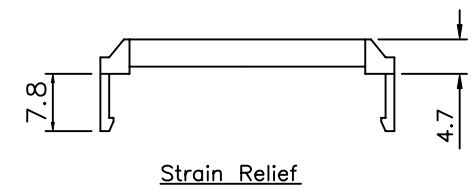
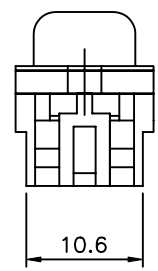
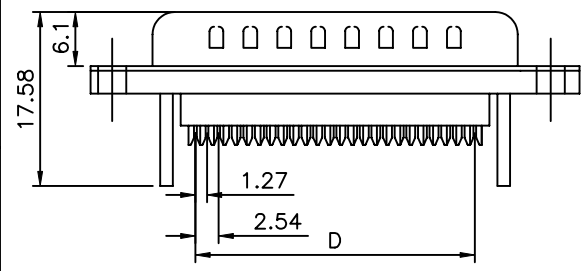
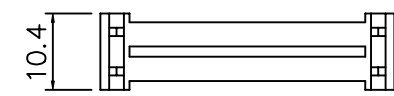
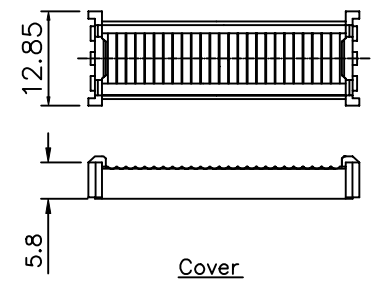
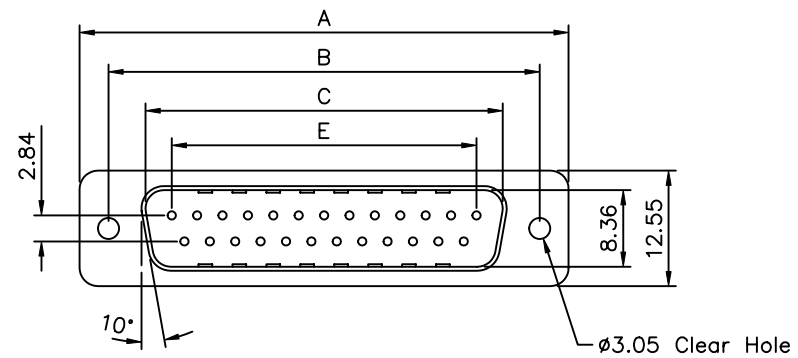


**SPECIFICATION**  
 Current Rating:3 Amp  
 Voltage Rating:250V AC/Rms 60Hz  
 Dielectric Withstanding Voltage:  
 1000V AC/Rms 60Hz For 1 Minute  
 Contact Resistance:20 Milliohms Max At 1Amp DC  
 Insulator Resistance:1000Megohms At 500V DC  
 Contact:Brass  
 Housing:Glass-Filled Thermoplastic PBT, UL 94V-0  
 Shell:Steel,Tin Over Copper  
 RoHS Compliant



P/N	Insulator
03009.03015.03019.18916	Blue
03012.03020	Black

Pin	A	B	C	D	E
9	30.81	24.99	16.92	10.16	11.08
15	39.20	33.30	25.25	17.78	19.39
25	53.05	47.04	38.96	30.48	33.24
37	69.40	63.50	55.42	45.72	49.86

**4UCON** 元化興業股份有限公司  
 4UCON TECHNOLOGY INC.

DRAWING No.		APPROVED BY		UNLESS OTHERWISE SPECIFIED TOLERANCES ARE .X ±0.38 .XX ±0.25 .XX ±0.13 .X ±3.0° .X ±1.0°
03012		MEI		
		CHECKED BY	HZF	
		DRAWING BY	XYH	
SCALE	NONE	REV.	A0	UNIT mm

△ A0	NEW RELEASE	HZF	06/03/2008
NO.REV.	REVISIONS	CHK	DATE