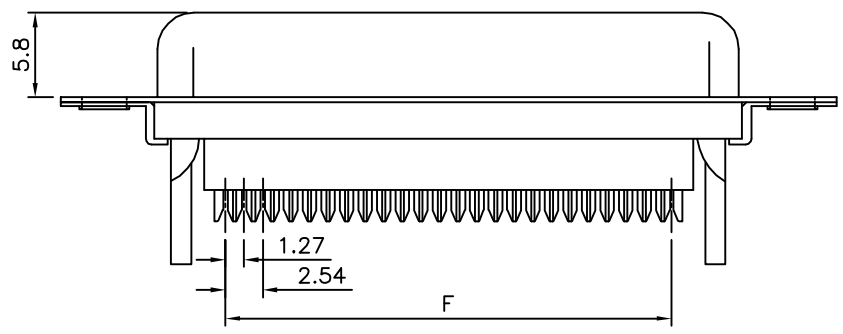
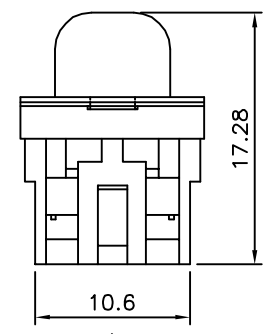


△ SPECIFICATION

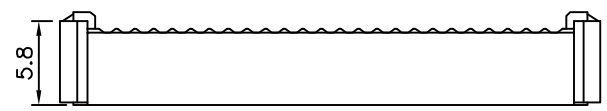
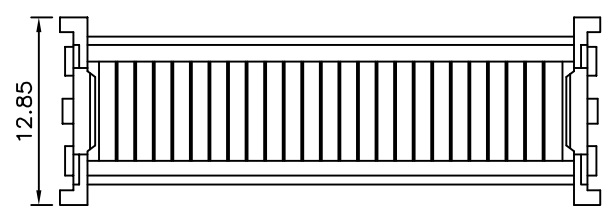
Current Rating:3 Amp
 Voltage Rating:250V AC/RMS 60Hz
 Contact Resistance:20 Milliohms Max. At 1 Amp DC
 Insulation Resistance:1000 Megohms At 500V DC
 Dielectric Withstanding Voltage:1000V AC/RMS 60Hz
 For 1 Minute
 Insulator:PBT+G.F.(UL94V-0),Blue
 Contact:Brass,Selective Gold Flash Over Nickel
 Shell:Steel,Tin Plated Over Copper
 Metal SR:SUS304
 RoHS Compliant



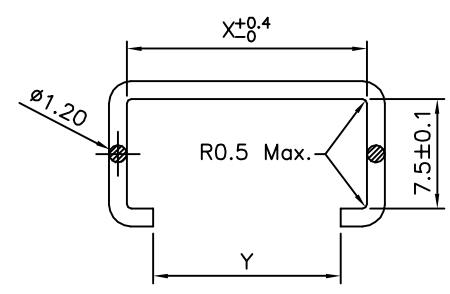
△ Without Insulator Support



△



△ Cover



△ Metal SR

△ Pin	A	B	D	E	F	X	Y
09	30.81	24.99	16.33	11.08	10.16	16.3	12.9 ⁺⁰ _{-0.1}
15	39.20	33.30	24.66	19.39	17.78	24.2	20.8 ⁺⁰ _{-0.4}
25	53.05	47.04	38.38	33.24	30.48	38.6	34.9 ⁺⁰ _{-0.1}
37	69.40	63.50	54.84	49.86	45.72	54.8	51.4 ⁺⁰ _{-0.1}

4UCON 元化興業股份有限公司
 4UCON TECHNOLOGY INC.

DRAWING No.		APPROVED BY		UNLESS OTHERWISE SPECIFIED TOLERANCES ARE △ X. ±0.38 X.* ±3* .X ±0.25 .X* ±1.0* .XX ±0.13
03061		EMILY		
		CHECKED BY		
		HZF		
		DRAWING BY		
		SONG		
SCALE	NONE	REV.	A1	UNIT mm

△ A1	Modify Data	HZF	07/22/2014
△ A0	NEW RELEASE		
NO. REV.	REVISIONS	CHK	DATE