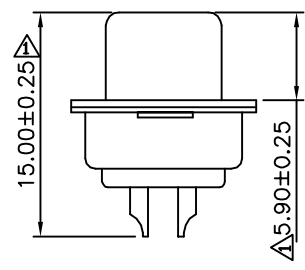
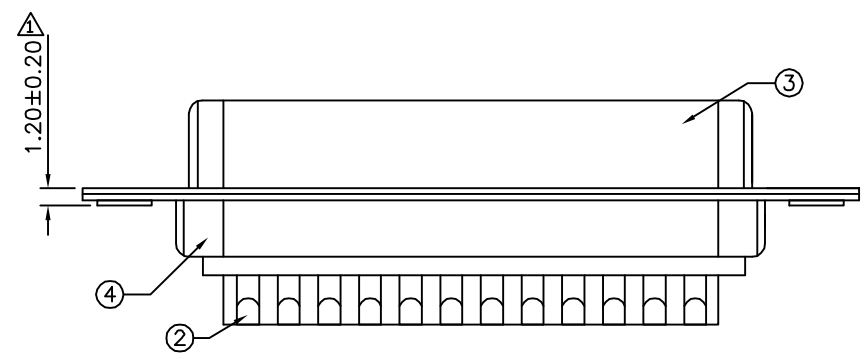
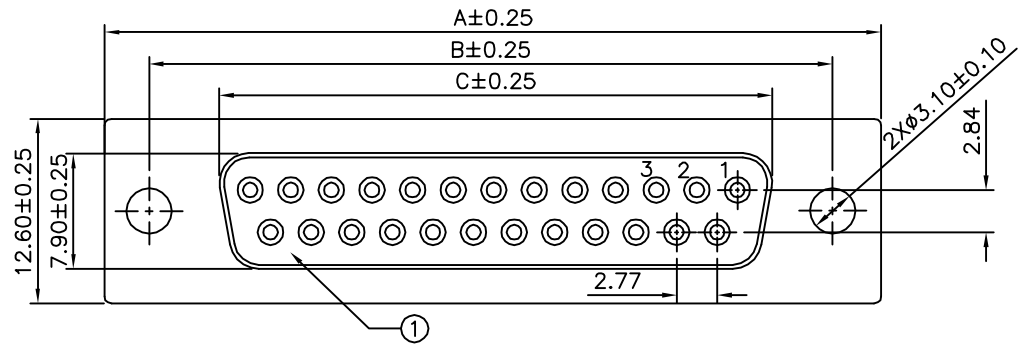


**△ SPECIFICATION**

Current Rating:1A Max.  
 Withstand Voltage:500V AC For 1 Minute  
 Contact Resistance:30 Milliohms Max.  
 Insulation Resistance:1000 Megaohms Min.  
 At DC 500V  
 Temperature Range:-55°C~+105°C

Pin	Mating Force	Unmating Force
09	5.5 Kgf Max.	1.7 Kgf Min.
15	6.5 Kgf Max.	1.9 Kgf Min.
25	7.5 Kgf Max.	2.7 Kgf Min.
37	9.0 Kgf Max.	3.2 Kgf Min.

RoHS Compliant



**△**

Pin	A	B	C
09	30.80	25.00	16.30
15	39.20	33.32	24.70
25	53.05	47.04	38.38
37	69.40	63.50	54.80

**△**

④	Back-Shell	Cold Rolled Steel	1	Tin Plated Over Copper
③	Front-Shell	Cold Rolled Steel	1	Nickel Plated Over Copper
②	Contact	Brass	—	Gold Flash Over All,Over Nickel
①	Housing	PBT	2	UL94V-0,Blue
No.	Name	Material	Q'ty	Remark

**4UCON** 元化興業股份有限公司  
 4UCON TECHNOLOGY INC.

DRAWING No.		APPROVED BY		UNLESS OTHERWISE SPECIFIED TOLERANCES ARE △ .X ±0.30 △ .XX ±0.20 △ .XXX ±0.10 ANG. ±1°
03300		EMILY		
		CHECKED BY		
		HZF		
		DRAWING BY		UNIT mm
		GAO		
SCALE	NONE	REV.	A1	UNIT

NO.	REV.	REVISIONS	CHK	DATE
△ A1		Modify Data	HZF	08/19/2013
△ A0		NEW RELEASE	SHIN	03/11/2007