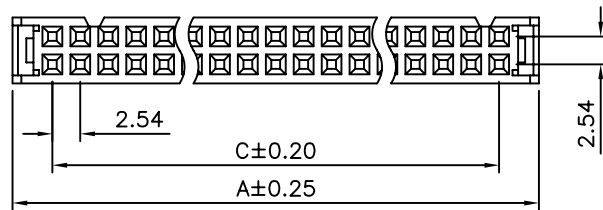
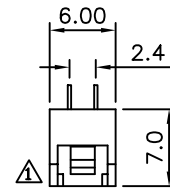
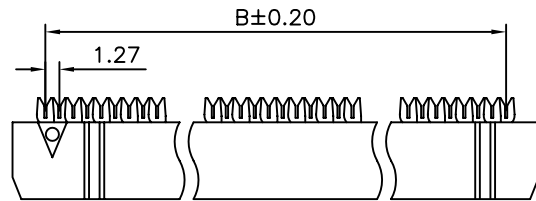
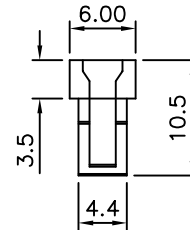
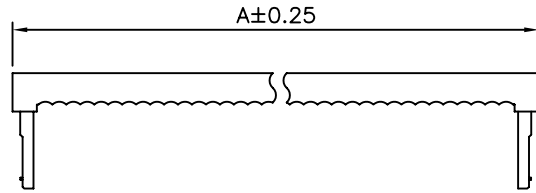


**SPECIFICATIONS**

Current Rating:1 Amp  
 Withstanding Voltage:AC 500V For 1 Minute.  
 Insulation Resistance:1000 Megohms Min. At DC 500V  
 Contact Resistance:15 Milliohms Max.  
 Operating Temperature:-40°C~+105°C  
 Insulator:PBT+30% Glass Fiber(UL 94V-0)  
 Contact:Copper Alloy,Gold Flash Over Nickel



Pos.	A	B	C
08	14.86	8.89	7.62
10	17.40	11.43	10.16
12	19.94	13.97	12.70
14	22.48	16.51	15.24
16	25.02	19.05	17.78
18	27.56	21.59	20.32
20	30.10	24.13	22.86
24	35.18	29.21	27.94
26	37.72	31.75	30.48
30	42.80	36.83	35.56
34	47.88	41.91	40.64
36	50.42	44.45	43.18
40	55.50	49.53	48.26
44	60.58	54.61	53.34
50	68.20	62.23	60.96
60	80.90	74.93	73.66
64	85.98	80.01	78.74

**4UCON** 元化興業股份有限公司  
 4UCON TECHNOLOGY INC.

DRAWING No.  
 03645

APPROVED BY MEI  
 CHECKED BY BECKY  
 DRAWING BY HZF  
 REV. B1

UNLESS OTHERWISE SPECIFIED TOLERANCES ARE  
 .X ±0.2  
 .XX ±0.10  
 ANG.  
 UNIT mm

NO.	REV.	REVISIONS	CHK	DATE
△	B1	Modify Drawing	BECKY	08/08/2006
△	B0	NEW RELEASE	BECKY	04/04/2006

SCALE NONE