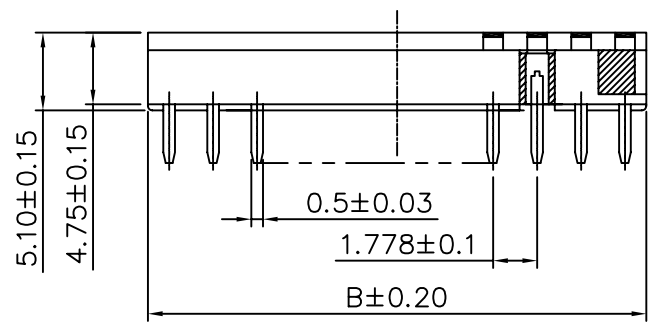
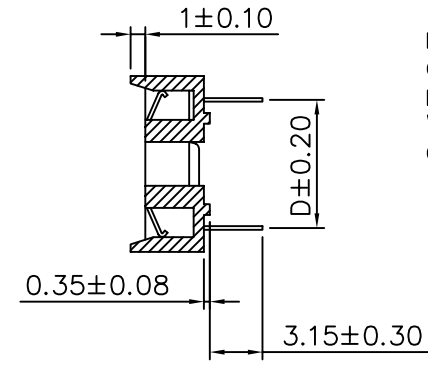
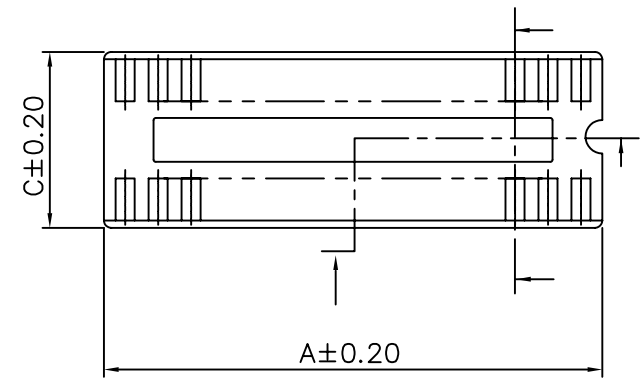


SPECIFICATIONS

Current Rating: 1A
 Dielectric Withstanding Voltage: 1000V RMS/Minute
 Contact Resistance: 20 Milliohms Initial
 30 Milliohms After Test
 Insulation Resistance: 5000 Megohms Min.
 Operating Temperature: -25°C To +85°C
 Insertion Force: 340g Max. Per Contact.
 Withdrawal Force: 14.5g Min. Per Contact
 Contact Material: Phosphor Bronze, Thickness 0.17mm
 Contact Plating: Tin Plated
 Insulator: PBT, UL 94V-0



CKT	A±0.20	B±0.20	C±0.20	D±0.20
16	14.22	12.45	10.10	7.62
20	17.78	16.00	10.10	7.62
22	19.56	17.78	10.10	7.62
24	21.34	19.56	10.10	7.62

4UCON 元化興業股份有限公司
 4UCON TECHNOLOGY INC.

DRAWING No.
 04740

APPROVED BY MEI
 CHECKED BY BECKY
 DRAWING BY HZF

UNLESS OTHERWISE SPECIFIED
 TOLERANCES ARE
 .X ±0.38
 .XX ±0.25
 ANG.
 UNIT mm

NO. REV. A0

NEW RELEASE
 REVISIONS

BECKY 2004/11/17
 CHK DATE

SCALE NONE

REV. A0

