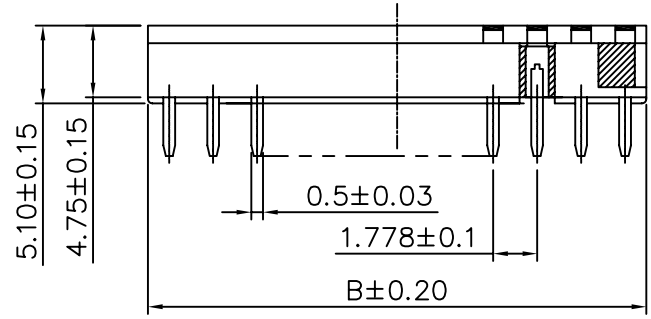
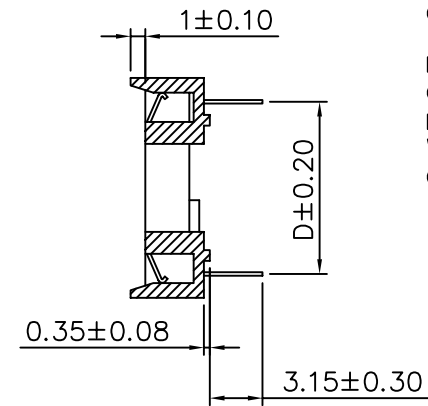
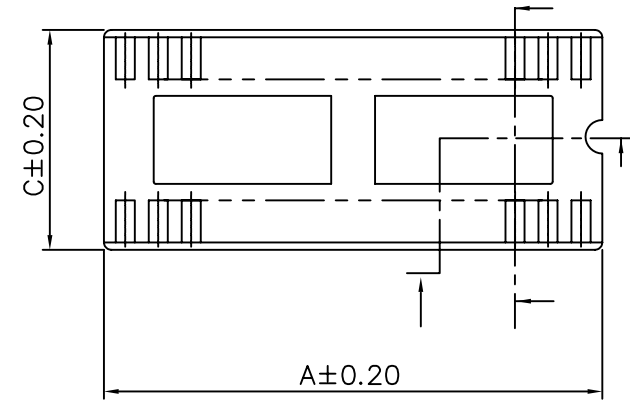


**SPECIFICATIONS**

Current Rating: 1A  
 Dielectric Withstanding Voltage: 1000V RMS/Minute  
 Contact Resistance: 20 Milliohms Initial  
 30 Milliohms After Test  
 Insulation Resistance: 5000 Megohms Min.  
 Operating Temperature: -25°C To +85°C  
 Insertion Force: 340g Max. Per Contact.  
 Withdrawal Force: 14.5g Min. Per Contact  
 Contact Material: Phosphor Bronze, Thickness 0.17mm  
 Contact Plating: Tin Plated  
 Insulator: PBT, UL 94V-0



CKT	A±0.20	B±0.20	C±0.20	D±0.20
24	21.34	19.56	12.65	10.16
28	24.89	23.11	12.65	10.16
30	26.67	24.89	12.65	10.16
32	28.45	26.67	12.65	10.16

**4UCON** 元化興業股份有限公司  
 4UCON TECHNOLOGY INC.

DRAWING No.  
 04745

APPROVED BY MEI  
 CHECKED BY BECKY  
 DRAWING BY HZF

UNLESS OTHERWISE SPECIFIED  
 TOLERANCES ARE  
 .X ±0.38  
 .XX ±0.25  
 ANG.

SCALE NONE

REV. A0

UNIT mm

NO. REV.

REVISIONS

CHK DATE

A0 NEW RELEASE BECKY 2004/11/17