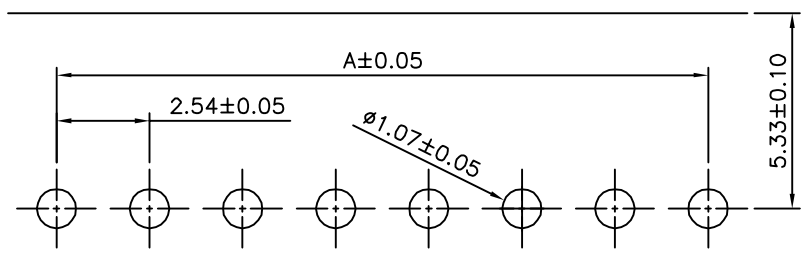
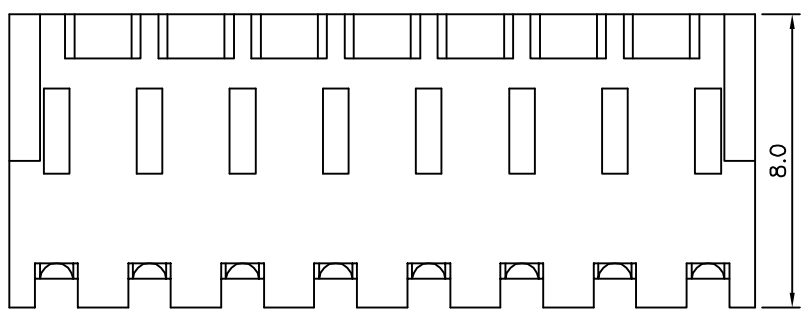
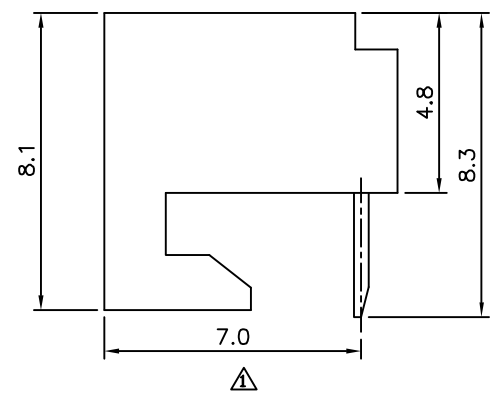
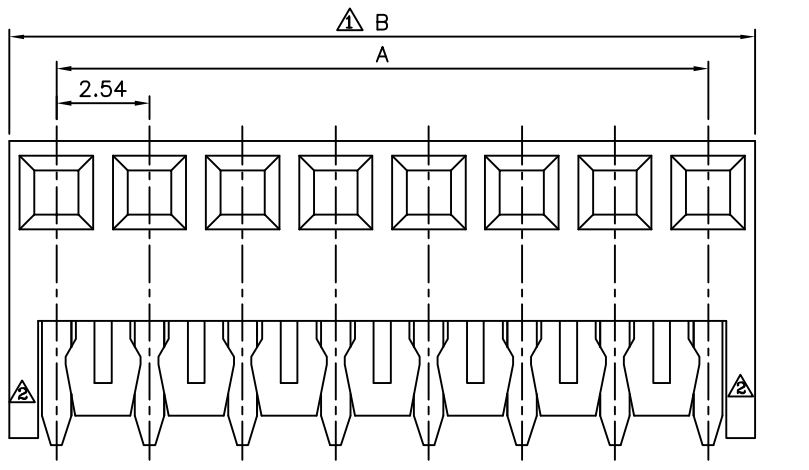


**SPECIFICATION**  
 Current:2.5A Max.  
 Voltage:250V AC Max.  
 Insulation Resistance:500K Megaohms Min.  
 Contact Resistance:20 Milliohms Max.  
 Dielectric Withstanding Voltage:1500V AC  
 Temperature Range:0°C~+75°C  
 Housing:PA66(UL94V-2),White  
 Contact:Brass,Tin Plated Over Nickel  
 RoHS Compliant



△ Recommended P.C.B. Layout



Pin	A	B	Pin	A	B
02	2.54	5.10	16	38.10	40.66
03	5.08	7.64	17	40.64	43.20
04	7.62	10.18	18	43.18	45.74
05	10.16	12.72	19	45.72	48.28
06	12.70	15.26	20	48.26	50.82
07	15.24	17.80	21	50.80	53.36
08	17.78	20.34	22	53.34	55.90
09	20.32	22.88	23	55.88	58.44
10	22.86	25.42	24	58.42	60.98
11	25.40	27.96	25	60.96	63.52
12	27.94	30.50	26	63.50	66.06
13	30.48	33.04	27	66.04	68.60
14	33.02	35.58	28	68.58	71.14
15	35.56	38.12	29	71.12	73.68

**4UCON** 元化興業股份有限公司  
 4UCON TECHNOLOGY INC.

DRAWING No. 05443  
 APPROVED BY EMILY  
 CHECKED BY HZF  
 DRAWING BY HAO  
 SCALE NONE  
 REV. A4  
 UNIT mm  
 UNLESS OTHERWISE SPECIFIED TOLERANCES ARE .X ±0.35 .XX ±0.10 ANG.

NO.	REV.	REVISIONS	CHK	DATE
△ A4		Modify Dim.	HZF	05/06/2015
△ A3		Modify Data	HZF	08/27/2013
△ A2		Modify Data	HZF	09/09/2010
△ A1		Modify Data	HZF	11/18/2008
△ A0		NEW RELEASE	HZF	04/11/2006