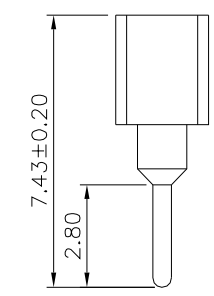
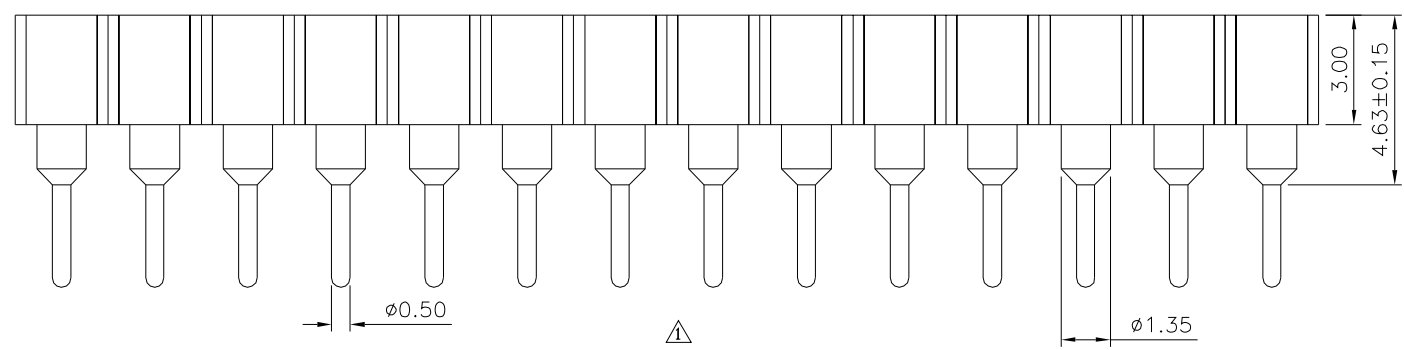
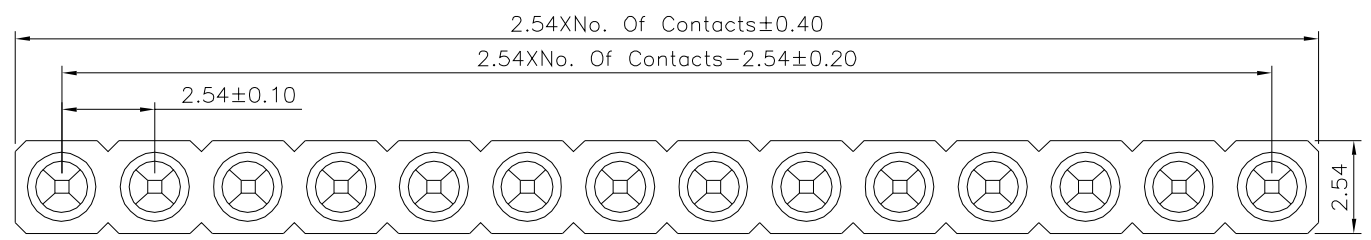
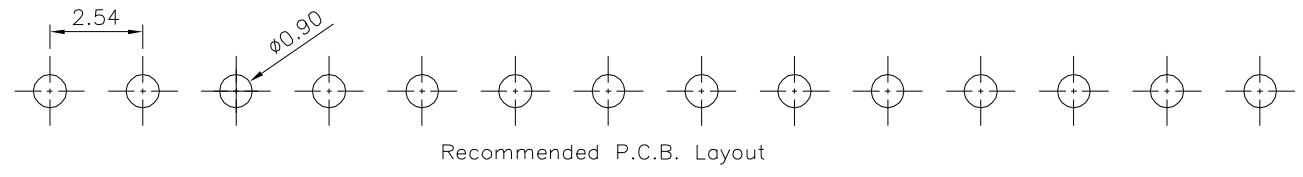


△ SPECIFICATION

Current Rating:3 Amps/Contact Max.
 Contact Resistance:4 Milliohms/Contact Max.
 Insulation Resistance:1000 Megaohms Min. At 100V
 Operating Voltage:60V AC/DC
 Average Insertion Force With Steel Pin Of
 ø0.43mm:<250g
 Average Withdrawal Force With Steel Pin Of
 ø0.43mm:>90g Min.
 Operating Temperature:Gold Plated:-55°C~+105°C
 Tin Plated:-40°C~+105°C
 Pin(Outer Sleeve):Brass,Tin Plated Over Nickel
 Clip(Contact 4 Finger):Beryllium Copper,Gold Plated
 Over Nickel
 Insulator(Housing):PPS(UL94V-0),Black
 RoHS Compliant



4UCON 元化興業股份有限公司
 4UCON TECHNOLOGY INC.

DRAWING No. △△
 05933

APPROVED BY MEI
 CHECKED BY HZF
 DRAWING BY CYP
 REV. B1

UNLESS OTHERWISE SPECIFIED TOLERANCES ARE
 X ±0.50
 XX ±0.30
 XXX ±0.20
 .XXX ±0.10
 ANG. ±5°
 UNIT mm

NO.	REV.	REVISIONS	CHK	DATE
△	B1	Modify Data	HZF	11/26/2019
△	B0	Modify Data	HZF	07/07/2016
△	B0	NEW RELEASE	HZF	07/07/2016

SCALE NONE