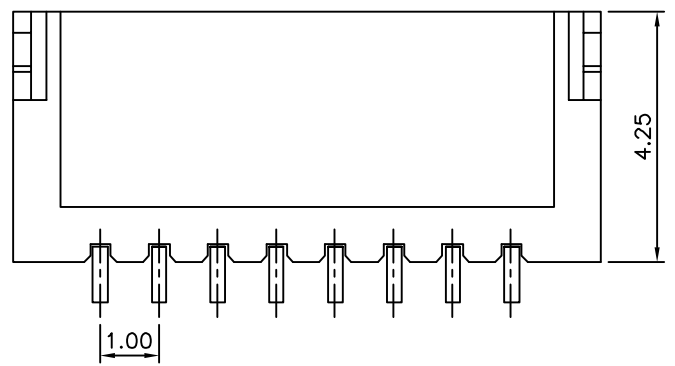
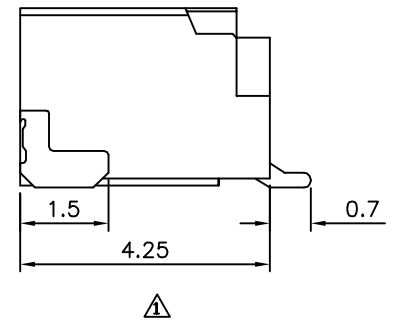
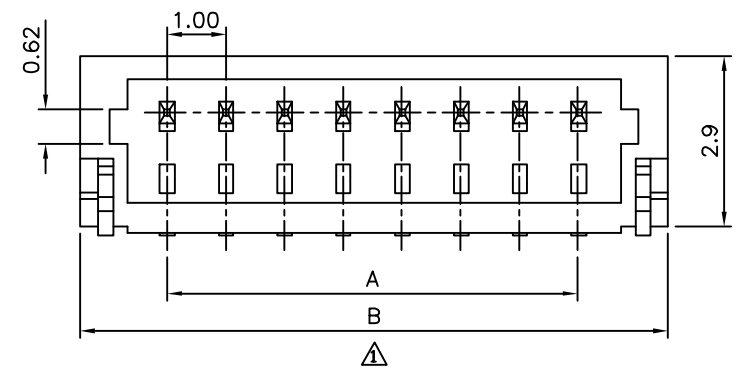
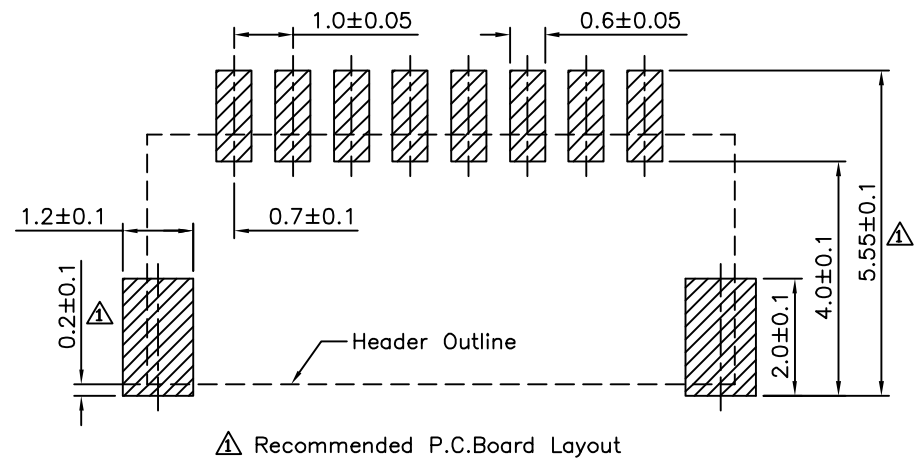


**△ SPECIFICATION**  
 Current Rating:1.0A  
 Voltage Rating:50V AC  
 Dielectric Withstanding Voltage:500V AC/Minute  
 Temperature Range:-40°C~+105°C  
 Contact Resistance:20 Milliohms Max.  
 Insulation Resistance:100 Megaohms Min.  
 Contact:Phosphor Bronze,Tin Plated  
 Insulator:PA6T(UL94V-0),Nature  
 RoHS Compliant



△

Pin	A	B
* 2	1.0	4.0
* 3	2.0	5.0
* 4	3.0	6.0
* 5	4.0	7.0
* 6	5.0	8.0
* 7	6.0	9.0
* 8	7.0	10.0
* 9	8.0	11.0
*10	9.0	12.0
*11	10.0	13.0
*12	11.0	14.0
*13	12.0	15.0
*14	13.0	16.0
*15	14.0	17.0
16	15.0	18.0
20	19.0	22.0

△ The Mark Of "\*" Are Toolled Already

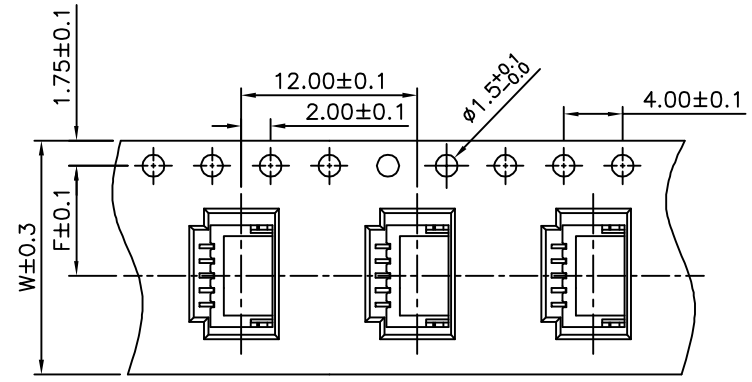
**4UCON** 元化興業股份有限公司  
 4UCON TECHNOLOGY INC.

DRAWING No.		APPROVED BY		UNLESS OTHERWISE SPECIFIED TOLERANCES ARE △ .X ±0.25 .XX ±0.15 ANG. UNIT mm
07315		EMILY		
		CHECKED BY HZF		
		DRAWING BY SONG		
SCALE	NONE	REV.	A2	

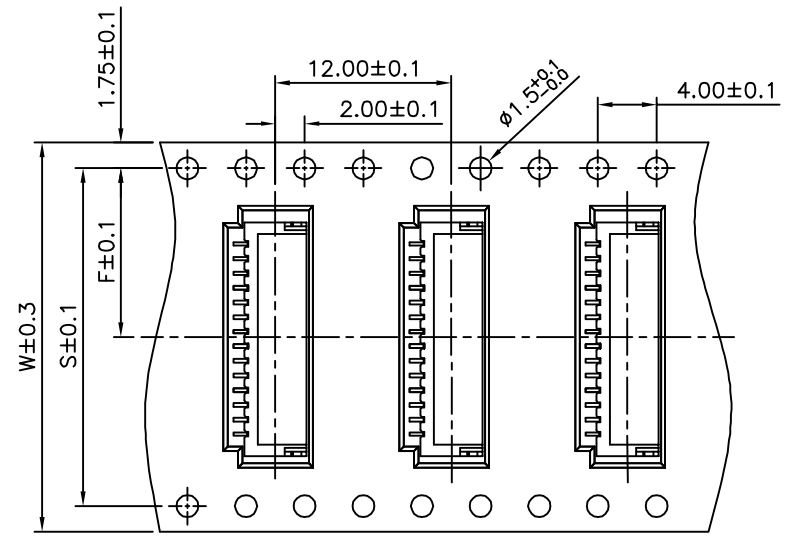
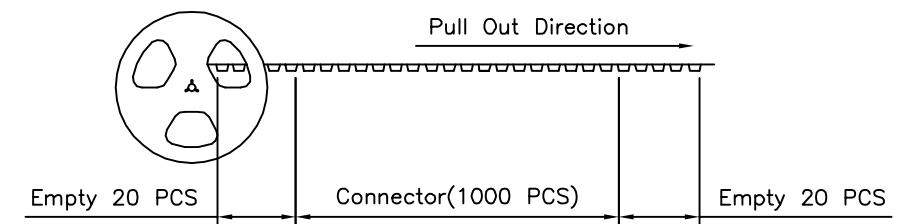
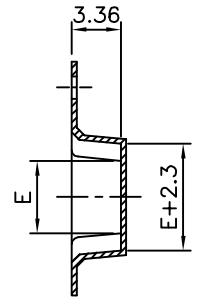
NO.	REV.	REVISIONS	CHK	DATE
△ A2		Modify Data	HZF	01/15/2013
△ A1		Modify Data	HZF	10/19/2011
△ A0		NEW RELEASE		

**SPECIFICATION**

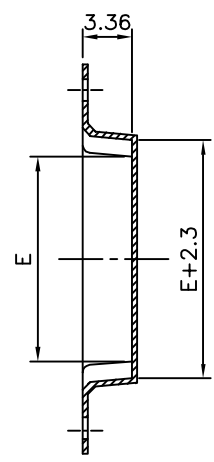
Q'ty:1000 PCS/Reel  
RoHS Compliant



2~13 Contacts



14~16,20 Contacts



Pin	W	F	S	E
*02	16.0	7.5		2.0
*03	16.0	7.5		3.0
*04	16.0	7.5		4.0
*05	16.0	7.5		5.0
*06	24.0	11.5		6.0
*07	24.0	11.5		7.0
*08	24.0	11.5		8.0
*09	24.0	11.5		9.0
*10	24.0	11.5		10.0
*11	24.0	11.5		11.0
*12	24.0	11.5		12.0
*13	24.0	11.5		13.0
*14	32.0	14.2	28.4	14.0
*15	32.0	14.2	28.4	15.0
16	32.0	14.2	28.4	16.0
20	44.0	20.2	40.4	20.0

△ The Mark Of "\*" Are Tooled Already

**4UCON** 元化興業股份有限公司  
4UCON TECHNOLOGY INC.

DRAWING No.		APPROVED BY		UNLESS OTHERWISE SPECIFIED TOLERANCES ARE △ .X ±0.25 .XX ±0.15 ANG.
07315		EMILY		
		CHECKED BY		
		HZF		UNIT mm
		DRAWING BY		
		SONG		NO. REV.
SCALE	NONE	REV.	A2	

△ A2	Modify Data	HZF	01/15/2013
△ A1	Modify Data	HZF	10/19/2011
△ A0	NEW RELEASE		
NO. REV.	REVISIONS	CHK	DATE