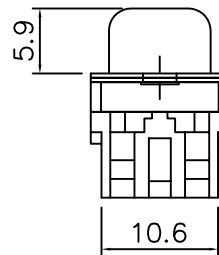
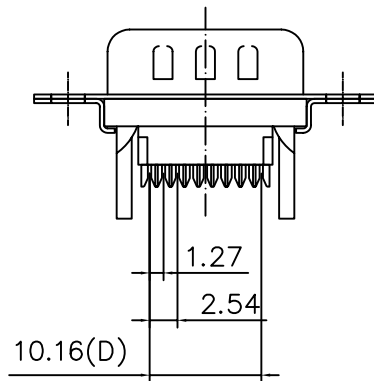
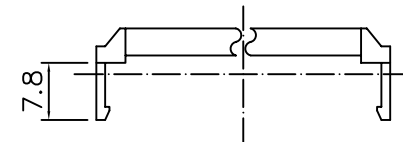
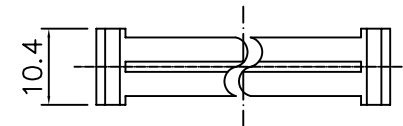
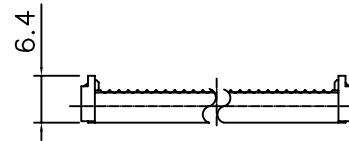
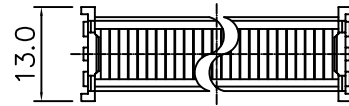
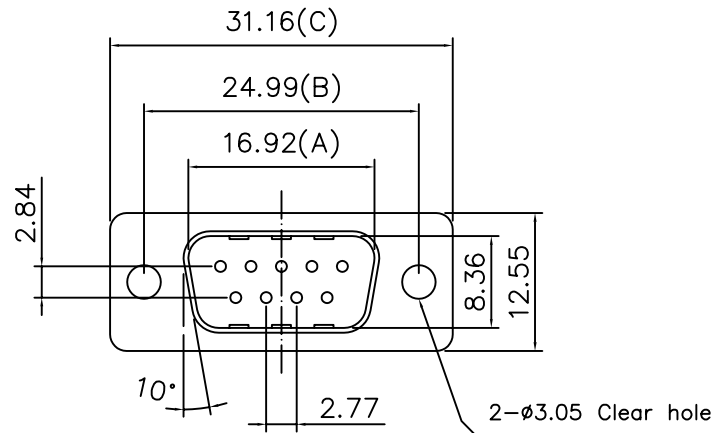


**SPECIFICATIONS**

Current Rating : 1 AMP  
 Dielectric Withstanding Voltage :  
     AC 500V For 1 Minute  
 Contact Resistance : 30 Milliohms Max.  
     At DC 100mA  
 Insulator Resistance : 1000Megohms Min.  
     At DC 500V  
 Operating Temperature : -55°C To +105°C  
 Single Contact Insertion Force : 500g Max.  
 Single Contact Withdrawal Force : 30g Min.  
 Contact : Brass  
 Housing : PBT & 30% Glass Fiber UL 94V-0  
 Color: Black



Position	A	B	C	D
*9	16.92	24.99	31.16	10.16
15	25.50	33.32	39.42	17.78
25	38.96	47.04	53.34	30.48
37	55.45	63.50	69.68	45.72

**4UCON** 元化興業股份有限公司  
 4UCON TECHNOLOGY INC.

DRAWING No.

07856

APPROVED BY

MEI

CHECKED BY

RAN

DRAWING BY

LCH

UNLESS OTHERWISE SPECIFIED

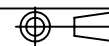
TOLERANCES ARE

.X ±0.1

.XX ±0.05

.XXX

UNIT mm



△ A0

NEW RELEASE

NO.REV.

REVISIONS

CHK

DATE

SCALE

NONE

REV.

A0

NO.REV.

REVISIONS

CHK

DATE