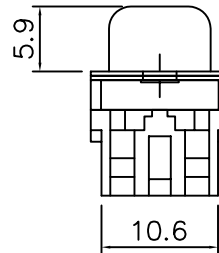
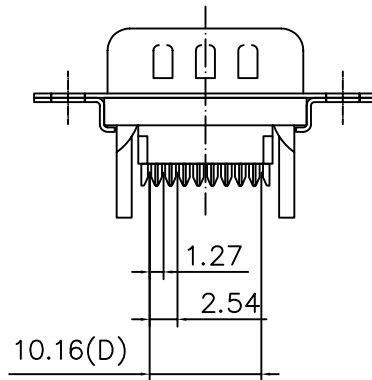
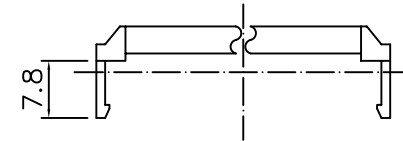
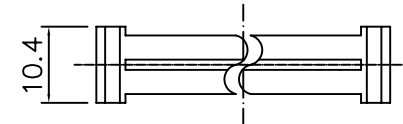
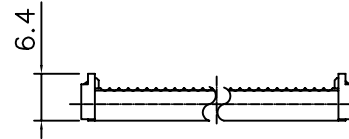
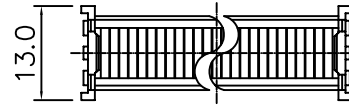
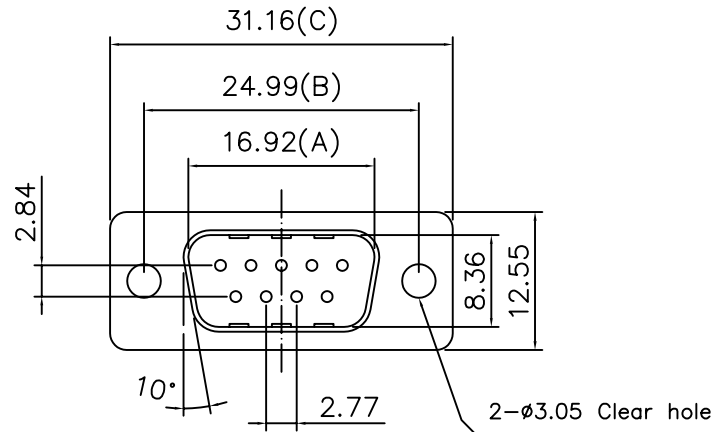


SPECIFICATIONS

Current Rating : 1 AMP
 Dielectric Withstanding Voltage :
 AC 500V For 1 Minute
 Contact Resistance : 30 Milliohms Max.
 At DC 100mA
 Insulator Resistance : 1000Megohms Min.
 At DC 500V
 Operating Temperature : -55°C To +105°C
 Single Contact Insertion Force : 500g Max.
 Single Contact Withdrawal Force : 30g Min.
 Contact : Brass
 Housing : PBT & 30% Glass Fiber UL 94V-0
 Color: Black



Position	A	B	C	D
*9	16.92	24.99	31.16	10.16
15	25.50	33.32	39.42	17.78
25	38.96	47.04	53.34	30.48
37	55.45	63.50	69.68	45.72

4UCON 元化興業股份有限公司
 4UCON TECHNOLOGY INC.

DRAWING No.

07857

APPROVED BY

MEI

CHECKED BY

RAN

DRAWING BY

LCH

UNLESS OTHERWISE SPECIFIED

TOLERANCES ARE

.X ±0.1

.XX ±0.05

.XXX

UNIT mm



NO. REV.

A0 NEW RELEASE

REVISIONS

CHK

DATE

SCALE

NONE

REV.

A0

NO. REV.

REVISIONS

CHK

DATE