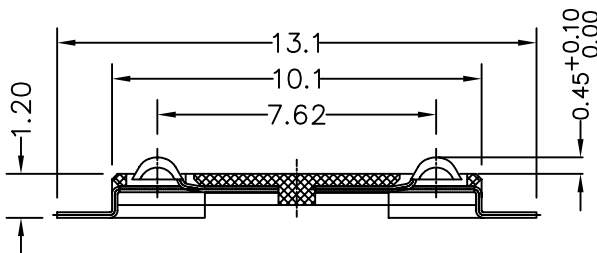
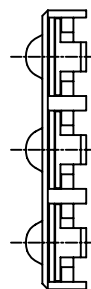
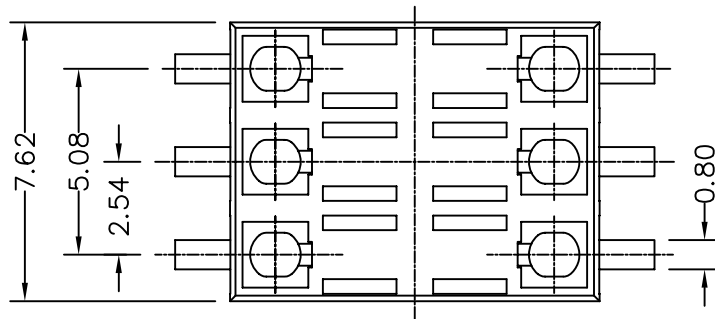


(.XX ±0.05 For PCB)  
Reference PCB Layout

Specifications:

1. General Information
  - . Contact Principle: Friction Technology
  - . Mounting Type: SMT
  - . Data Contact Material: Copper Alloy
  - . Insulator Material: Thermoplastic UL94V-0
  - . Data Contacts Plating: Gold Plated Over Nickel
2. Electrical Specification
  - . Contact Resistance: 50m Ohms Max
  - . Insulator Resistance: 1000M Ohms Min
  - . Dielectrical Withstanding Voltage: 500V AC
  - . Voltage Rating: 30V AC R.M.S. 1 Min(Sea Level)
  - . Current Rating: 1A Max, 10uA Min
3. Mechanical Specification
  - . Contact Force: 0.2N~0.6N
  - . Durability: 10,000 Cycles Min
4. Environmental Specification
  - . Operating Temperature: -20°C~+70°C
  - . Operating Humidity: 20%~95% RH
  - . Solderability: Manual Soldering: 360°C, 3 Sec Max  
Vapor Phase: 215°C, 30 Sec Max  
IR Re-flow : 260°C, 15 Sec Max

RoHS Compliant



**4UCON** 元化興業股份有限公司  
4UCON TECHNOLOGY INC.

DRAWING No.

08966

APPROVED BY

MEI

CHECKED BY

LHC

DRAWING BY

XSH 1/05-2006

UNLESS OTHERWISE SPECIFIED

TOLERANCES ARE

.X ±0.38

.XX ±0.25

ANG. ±1°

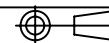
SCALE

NONE

REV.

A0

UNIT  
mm



NO. REV.

0

A0

NEW RELEASE

REVISIONS

CHK

XSH 1/05-2006

DATE