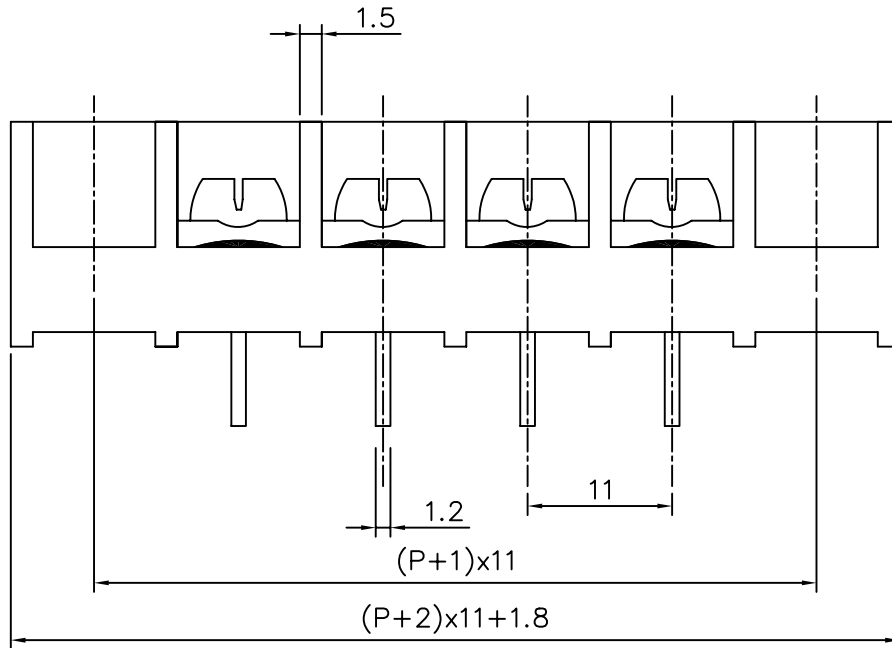
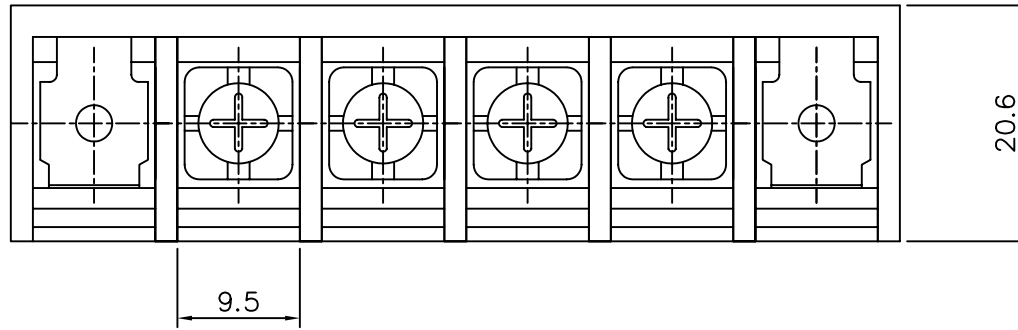
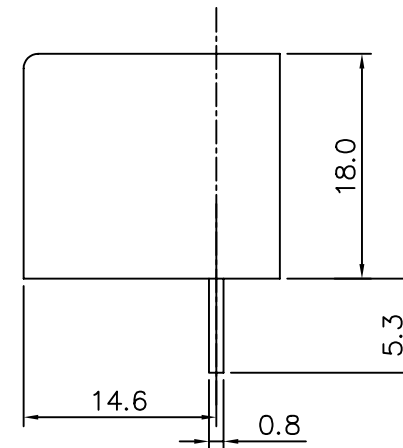


SPECIFICATIONS

Current Rating:30AMP
 Voltage Rating:300V AC
 Barrier:Thermoplastic,UL 94V-0,Black
 Terminal:Brass,Tin Plated
 Screw:Steel,Nickel Plated
 Wire ange AWG:12~22 STR
 Insulation Withstands Voltage:AC 2000V
 Insulation Resistance:500Megohms Or More
 At DC 500V
 Poles:2-32



*P=No.Of Poles



4UCON 元化興業股份有限公司
 4UCON TECHNOLOGY INC.

DRAWING No.
 09188

APPROVED BY MEI
 CHECKED BY RAN
 DRAWING BY HZF

UNLESS OTHERWISE SPECIFIED TOLERANCES ARE
 X. ±0.8
 .X ±0.38
 .XX ±0.25

SCALE NONE

REV. A

UNIT mm

AREA

REVISIONS

CHK

DATE