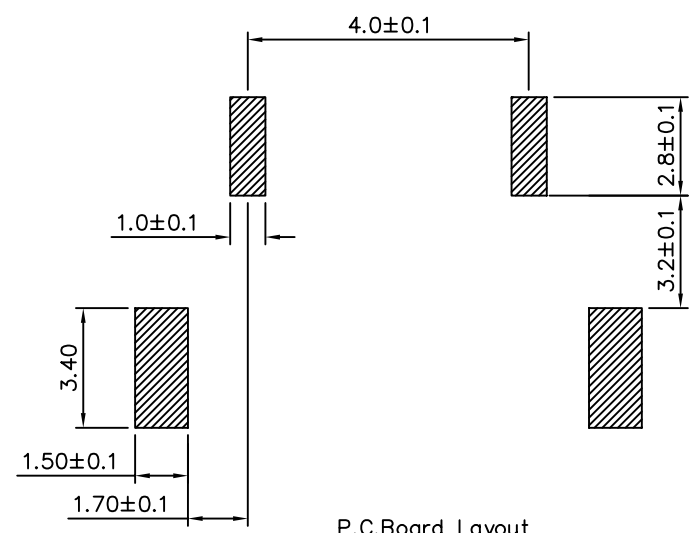
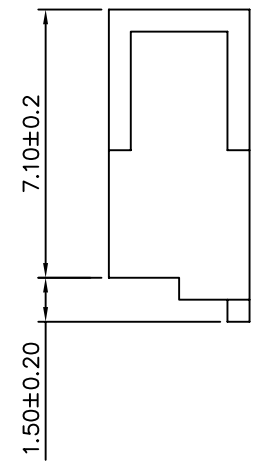
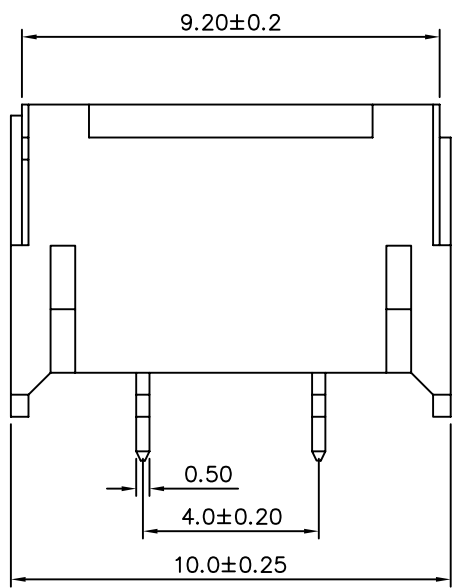
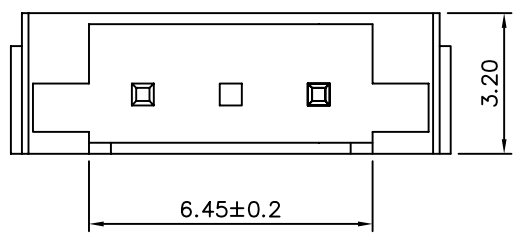


**SPECIFICATIONS**

Current Rating: 1A AC,DC  
 ⚠ Voltage Rating: 600V AC,DC  
 Temperature Range: -25°C To +85°C  
 Contact Resistance: 20 Milliohms Max.  
 Insulation Resistance: 1000 Megohms Min.  
 Withstanding Voltage: 500V AC/Minute  
 Terminal: Brass, Tin Plated  
 Insulator: Nylon 6T, UL 94V-0  
 Package: 1000 Pcs/Reel



**4UCON** 元化興業股份有限公司  
 4UCON TECHNOLOGY INC.

DRAWING No.		APPROVED BY		UNLESS OTHERWISE SPECIFIED TOLERANCES ARE .X ±0.38 .XX ±0.25 ANG.
10071		MEI		
		LHC		
		DRAWING BY		UNIT mm
		HXY		
SCALE	NONE	REV.	A1	⊕

NO.	REV.	REVISIONS	CHK	DATE
⚠ A1		Voltage Rating: 130V → 600V	BECKY	07/06/2005
⚠ A		NEW RELEASE	LHC	