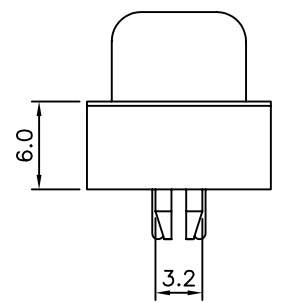
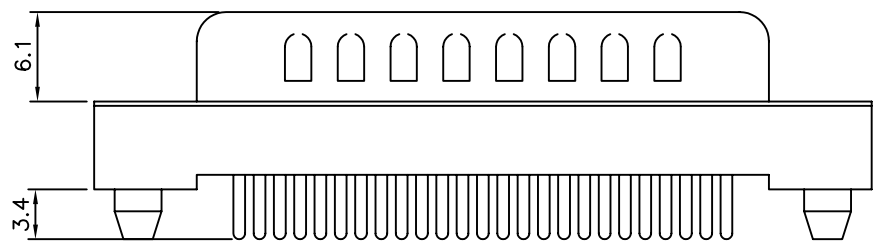
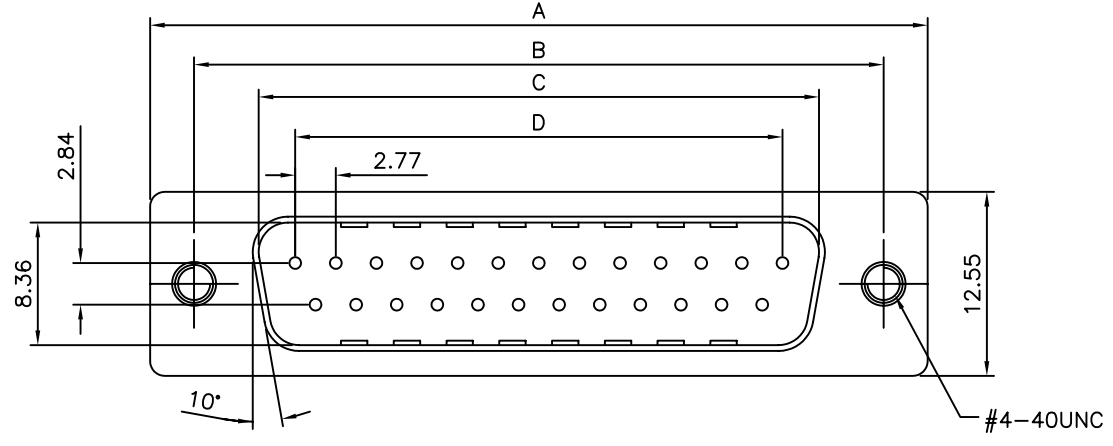
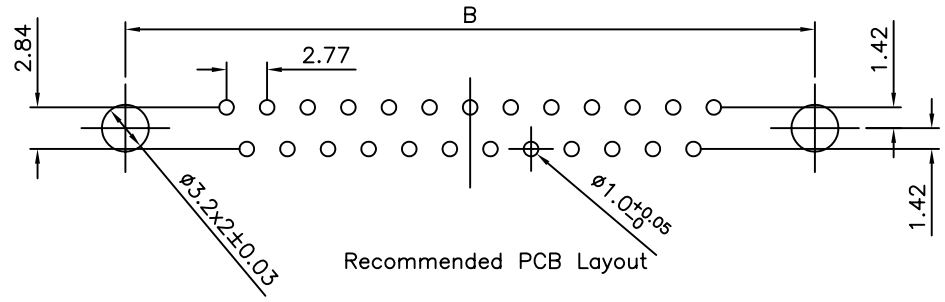


**SPECIFICATIONS**

Current Rating: 1Amp  
 Voltage Rating: 250VAC/RMS 60Hz  
 Contact Resistance: 20 Milliohms Max. At 1 Amp DC.  
 Insulation Resistance: 1000 Megohms At 500 VDC  
 Dielectric Withstanding Voltage: 1000 VAC/RMS 60Hz For 1 Minute  
 Insulator: See Ordering Info For Colour Type  
 Contact: Copper Alloy  
 Shell: SPCC



Pin	A	B	C	D
9	30.81	24.99	16.92	11.08
15	39.14	33.32	25.50	19.39
25	53.04	47.04	38.96	33.24
37	69.32	63.50	55.42	49.86

**4UCON** 元化興業股份有限公司  
 4UCON TECHNOLOGY INC.

DRAWING No.		APPROVED BY		UNLESS OTHERWISE SPECIFIED TOLERANCES ARE X. ±0.38 .X ±0.25 X.° ±3° .XX ±0.13 .X° ±1.0°
10628		MEI		
		SHIN		
		PEGA		
SCALE	NONE	REV.	BO	UNIT mm

NO.	REV.	BO	NEW RELEASE	SHIN	02/07/2007
			REVISIONS	CHK	DATE