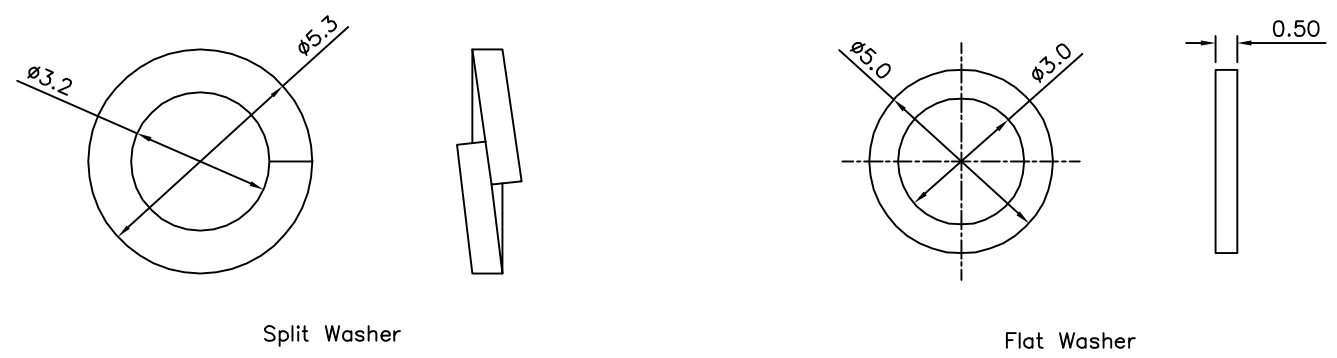
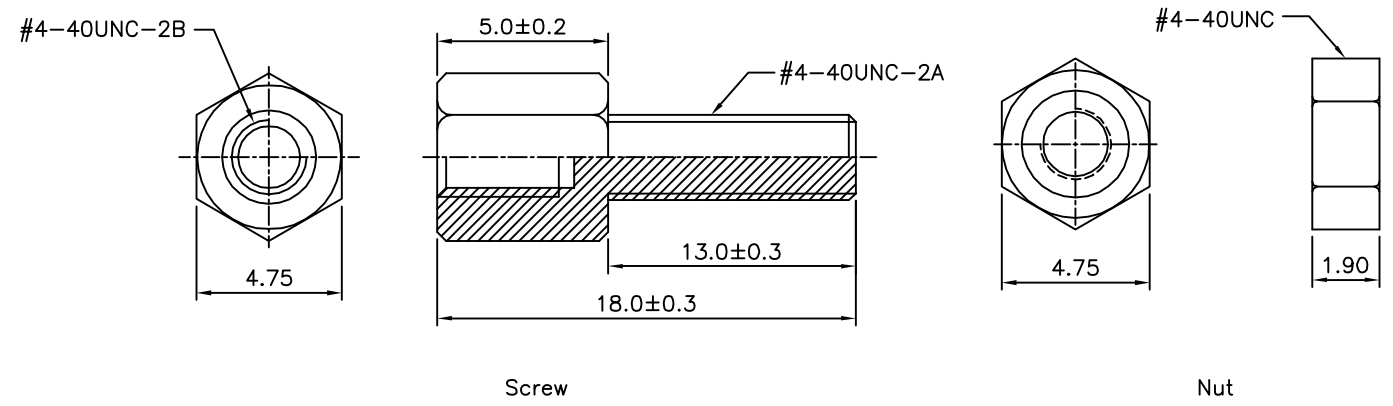


**SPECIFICATION**  
 Screw: Copper, Nickel Plated  
 Nut: Steel, Nickel Plated  
 Washer: Steel, Nickel Plated  
 Q'ty: Screw, Flat Washer, Split Washer & Nut  
 Each Of 2 PCS/Bag  
 RoHS Compliant



**4UCON** 元化興業股份有限公司  
 4UCON TECHNOLOGY INC.

DRAWING No.		APPROVED BY		UNLESS OTHERWISE SPECIFIED TOLERANCES ARE .X ±0.38 .XX ±0.25
10985		EMILY		
		CHECKED BY		
		HZF		
		DRAWING BY		
		HAO		
SCALE	NONE	REV.	A0	UNIT
				mm

NO.	REV.	DESCRIPTION	CHK	DATE
△ A0		NEW RELEASE	HZF	05/05/2015
		REVISIONS		