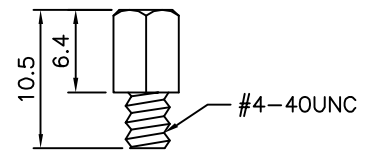
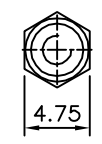


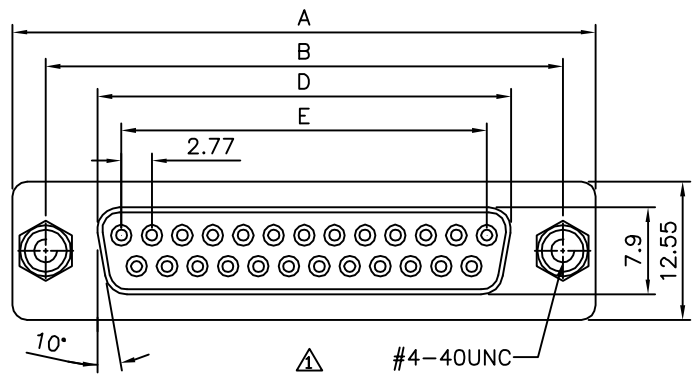
△ Recommended P.C.B. Layout



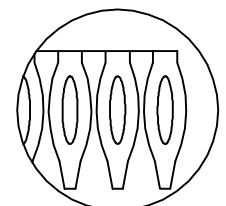
△ #4-40 UNC Screwlock Installed

△ SPECIFICATION

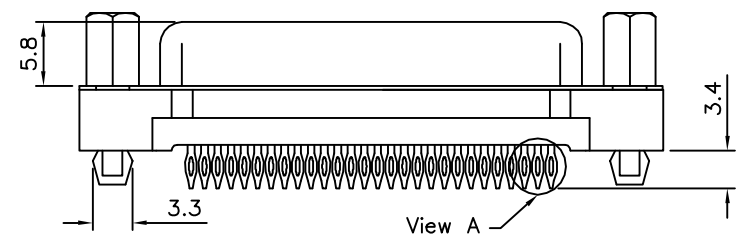
Current Rating:3 Amp  
 Voltage Rating:250V AC/RMS 60Hz  
 Contact Resistance:20 Milliohms Max. At 1 Amp DC  
 Insulation Resistance:1000 Megaohms At 500V DC  
 Dielectric Withstanding Voltage:  
 1000V AC/RMS 60Hz For 1 Minute  
 Insulator:PBT(UL94V-0),Black  
 Contact:Phosphor Bronze,Gold Flash On Contact  
 Area,Tin Plated On Solder Tails,Over Nickel  
 Shell:Steel,Tin Plated Over Copper  
 Boardlock:Brass,Tin Plated  
 Screwlock:Steel,Nickel Plated  
 RoHS Compliant



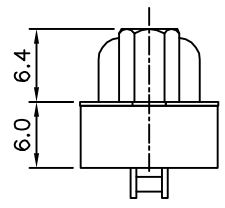
△ #4-40 UNC



△ View A



△ View A



△

△

Pin	A	B	D	E
9	30.81	24.99	16.33	11.08
15	39.20	33.30	24.70	19.39
25	53.05	47.04	38.40	33.24
37	69.40	63.50	54.80	49.86

**4U CON** 元化興業股份有限公司  
 4U CON TECHNOLOGY INC.

DRAWING No.  
 11075

APPROVED BY EMILY  
 CHECKED BY HZF  
 DRAWING BY HAO

UNLESS OTHERWISE SPECIFIED TOLERANCES ARE  
 X.  $\pm 0.38$  X.\*  $\pm 3^\circ$   
 .X  $\pm 0.25$  .X\*  $\pm 1.0^\circ$   
 .XX  $\pm 0.13$  △

SCALE NONE

REV. A1

UNIT mm

NO.	REV.	REVISIONS	CHK	DATE
△ A1		Modify Data	HZF	10/16/2015
△ A0		NEW RELEASE	BECKY	2004/11/03