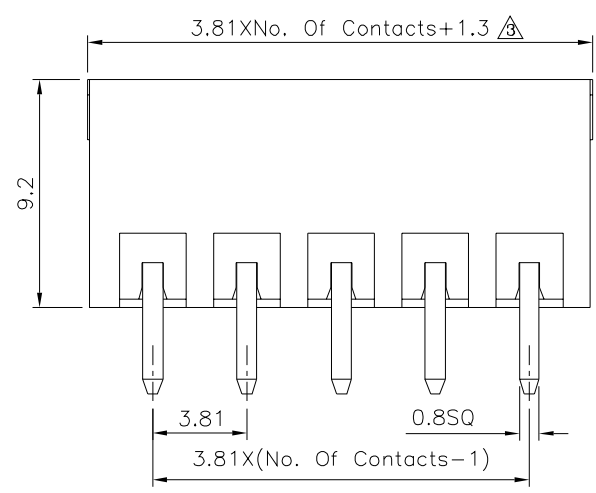
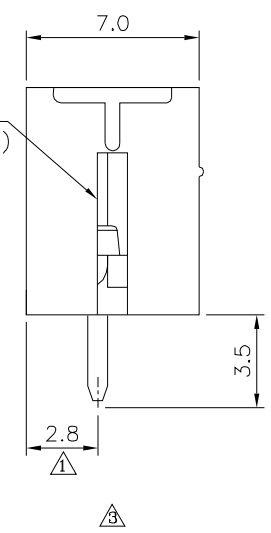


Recommended P.C.B. Layout



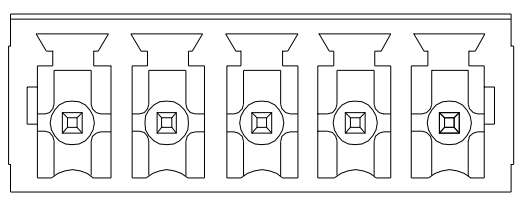
2P To 6P Open Type  
Above 7P (Including 7P)  
Close Type

Length(L)	Tolerances
0~30	±0.30
30~60	±0.40
60~120	±0.50
120~220	±0.60



△△ SPECIFICATION

Current Rating:12A/Way Max.  
Voltage Rating:300V AC  
Withstanding Voltage:1600V AC/Minute  
Operation Temperature:-40°C~+105°C  
Solder Pin:Copper Alloy,Tin Plated  
Insulator Body:Polyamide(UL94V-0),Green  
RoHS Compliant



**4UCON** 元化興業股份有限公司  
4UCON TECHNOLOGY INC.

DRAWING No. △△  
**11671**

APPROVED BY Jason Wu  
CHECKED BY Leo Han  
DRAWING BY Michelle Lee

UNLESS OTHERWISE SPECIFIED TOLERANCES ARE △△  
X. ±0.50  
.X ±0.40  
.XX ±0.30  
ANG. ±1°

SCALE NONE REV. A3 UNIT mm

NO.	REV.	REVISIONS	CHK	DATE
△	A3	Modify Mata	HZF	06/15/2026
△	A2	Modify Mata	HZF	01/30/2016
△	A1	Modify Mata	HZF	08/14/2012
△	A0	NEW RELEASE	HZF	04/10/2009