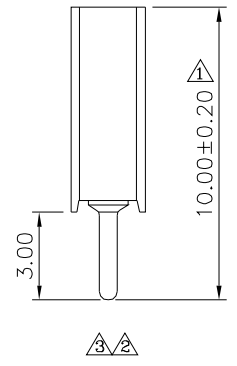
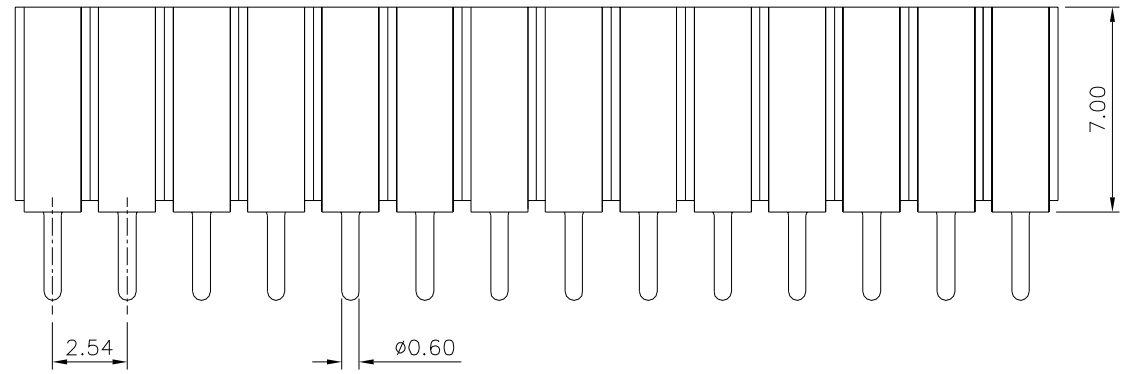
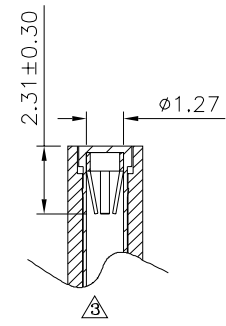
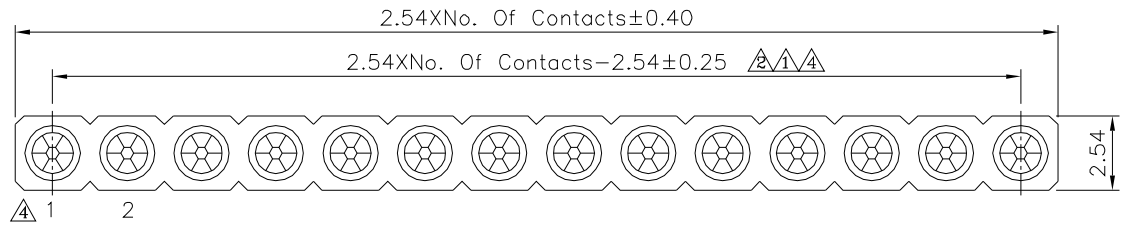


Recommended P.C.B. Layout  
 (PCB Board Tolerance ±0.05)

**SPECIFICATION**

Current Rating: 3 Amps/Contact Max.  
 Contact Resistance: 20 Milliohms Max./Contact  
 Insulation Resistance: 1000 Megaohms Min.  
 Operation Temperature: -40°C ~ +105°C  
 Average Insertion Force With Steel Pin Of  $\phi 0.66\text{mm}$ : <140g  
 Average Withdrawal Force With Steel Pin Of  $\phi 0.66\text{mm}$ : >25g Min.  
 Pin (Outer Sleeve): Brass, Tin Plated Over Nickel  
 Clip (Contact 6 Finger): Beryllium Copper, Gold Flash Over Nickel  
 Insulator (Housing): PPS (UL94V-0), Black  
 RoHS Compliant



**4UCON** 元化興業股份有限公司  
 4UCON TECHNOLOGY INC.

DRAWING No. **12350**

APPROVED BY: MEI  
 CHECKED BY: HZF  
 DRAWING BY: CYP

UNLESS OTHERWISE SPECIFIED TOLERANCES ARE:  
 X: ±0.50  
 .X: ±0.30  
 .XX: ±0.20  
 .XXX: ±0.10  
 ANG. ±5°

A4	Modify Data	HZF	11/30/2022
A3	Modify Data	HZF	11/23/2019
A2	Modify Data	HZF	03/12/2013
A1	Modify Data	HZF	02/17/2011
A0	NEW RELEASE	HZF	08/26/2008
NO. REV.	REVISIONS	CHK	DATE

SCALE: NONE

REV. A4

UNIT mm

NO. REV. REVISIONS CHK DATE