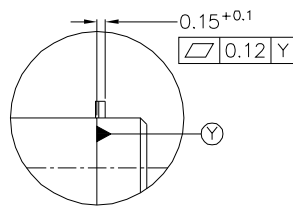
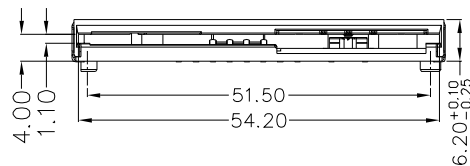
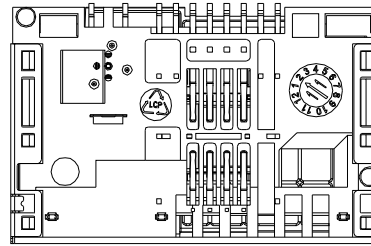
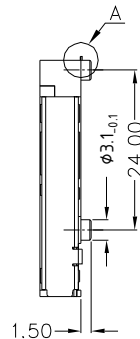
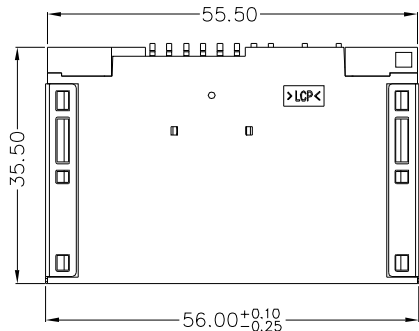
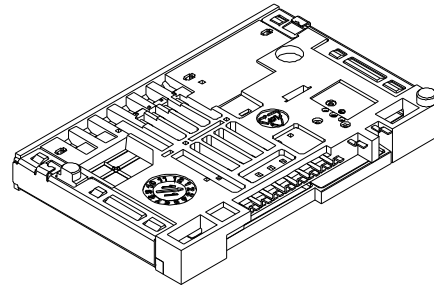
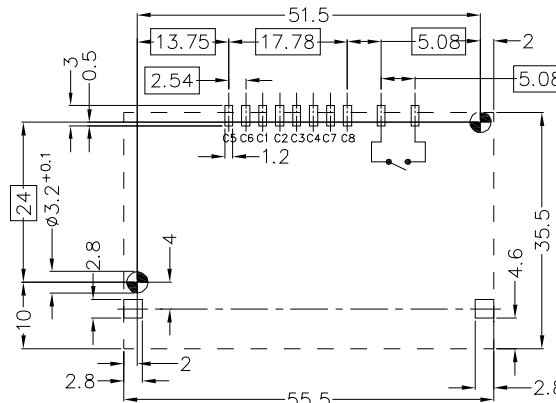


Specifications:

- General Information
 - Contact Principle: Landing Technology
 - Mounting Type: SMT
 - Switch: Normal Open With Sealed End Switch
 - Durability: Insert And Withdraw Card For 500,000 Cycles At Maximum Rate Of 600 Cycles Per Hours (Conditions: In A Clean Office Room. In Damp Or Dirty Atmosphere, The Life May Be 1/3 To 1/5 Of The Above Figures)
 - Material&Finish:
 - Data Contact: Copper Alloy
Gold Flash Over Palladium Plated 30u" On Contact Area. Tin Plated On Terminal Area
 - Insulator: Thermoplastic, UL94V-0
 - Bracket: Copper Alloy, Tin Plated Over Nickel.
 - Switch: Copper Alloy
Gold Flash Over Nickel Plated On Contact Area, Tin Plated On Terminal Area
- Electrical Specification
 - Contacts
 - Contact Resistance: 200 Milliohms Max.
 - Insulator Resistance: 1000 Megohms Min.
 - Dielectric Withstanding Voltage: 1000V AC R.M.S. Min(Sea Level)
 - Rating Voltage: 30V AC
 - Current Rating: 1A Max., 10uA Min.
 - Seal End Switch
 - Switching Voltage: 20mV Min. 50V Max.
 - Switching Current: 1mA Min. 300mA Max.
 - Switching Load: 1VA Max.
 - Contact Resistance: 400 Milliohms Max.
 - Insulation Resistance: 100 Megohms Min.
- Mechanical Specification
 - Card Insertion Force: 8N Max. \triangle
 - Card Withdrawal Force: 1N Min.
 - Contact Force: 0.2N ~ 0.6N
 - Contact Retention Force: 0.3kgf Min.
- Environmental Specification
 - Operating Temperature: -40°C ~ +70°C
 - Operating Humidity: 10% ~ 100% RH
 - Solderability: Reflow Soldering: 260°C 10 Sec. Max.
Wave Soldering: 260°C 5 Sec. Max.
Manual Soldering: 350°C 2 Sec. Max.
 - Storage Temperature: -40°C ~ +85°C
 - Air Pressure: 70kPa ~ 106kPa.
- Chip Contact Location Specification
 - According To: ISO 7816-2
 - Contact Style: Ball Radius 0.8mm Min.
- RoHS Compliant.



DETAIL A(5:1)



Reference P.C.B. Layout(Tolerance: ±0.10mm)

4UCON 元化興業股份有限公司
4UCON TECHNOLOGY INC.

DRAWING No.

13400

APPROVED BY

VIVIAN

CHECKED BY

LYS

DRAWING BY

YUEYU

SCALE NONE

REV.

A1

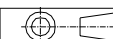
UNLESS OTHERWISE SPECIFIED TOLERANCES ARE

.x ±0.38

.xx ±0.25

ANG. ±1°

UNIT mm



\triangle	A1	Modify Data	YUEYU	03/25/2014
\triangle	A0	NEW RELEASE	YUEYU	10/29/2013
NO.	REV.	REVISIONS	CHK	DATE