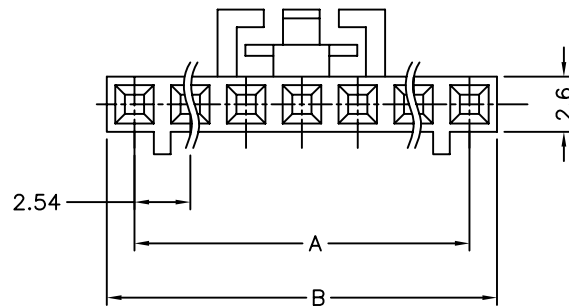


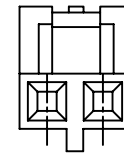
SPECIFICATIONS

Current Rating:2.5A AC,DC
 Voltage Rating:250V AC,DC
 Temperature Range:-25°C to +85°C
 Insulation Resistance:1,000 Megohms Min.
 Withstand Voltage:800V AC/Minute
 Material:PBT,UL 94V-0,Black

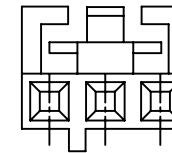
Latch And Polarization
 RIB Location



4-25 Circuit

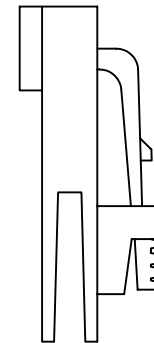
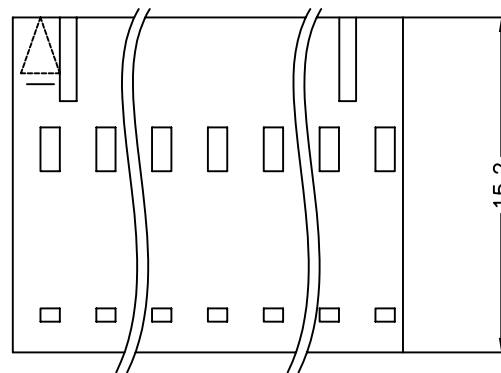


2 Circuit



3 Circuit

Circuit	A	B
2	2.54	5.2
3	5.08	7.8
4	7.62	10.3
5	10.16	12.9
6	12.70	15.4
7	15.24	18.0
8	17.78	20.5
9	20.32	23.1
10	22.86	25.6
11	25.40	28.1
12	27.94	30.7
13	30.48	33.2
14	33.02	35.8
15	35.54	38.3
16	38.10	40.9
17	40.64	43.4
18	43.18	46.0
19	45.72	48.5
20	48.26	51.1
21	50.80	53.6
22	53.34	56.2
23	55.88	58.7
24	58.42	61.2
25	60.96	63.8



4UCON 元化興業股份有限公司
 4UCON TECHNOLOGY INC.

DRAWING No.
 13995

APPROVED BY MEI
 CHECKED BY BECKY
 DRAWING BY HZF

UNLESS OTHERWISE SPECIFIED
 TOLERANCES ARE
 .X ±0.38
 .XX ±0.25
 ANG.

SCALE NONE

REV. A0

UNIT mm

NO. REV.

A0 NEW RELEASE
 REVISIONS

BECKY 2004/06/12
 CHK DATE