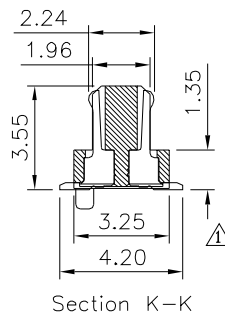
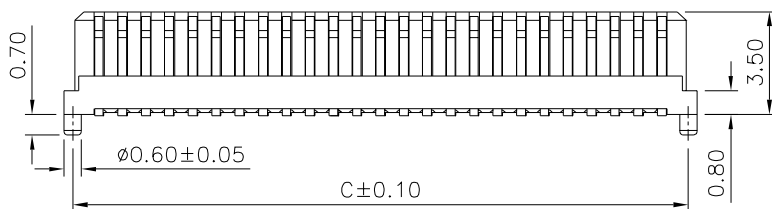
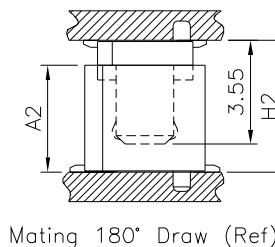
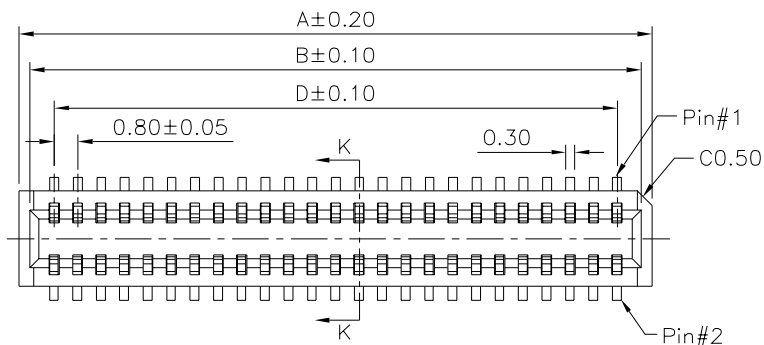


Mating 90° Dimension

| Male Series No. | Female Series No. | A1 | H1 | E |
|-----------------|-------------------|------|------|------|
| 1650 | 1636 | 3.55 | 5.65 | 0.95 |

SPECIFICATION

- General Characteristics:**
 0.8mm Board To Board Female XXP SMT
 180° With Post Without Fitting Nail Stacking
 Height=4.5/5.0/5.65/6.0/6.5mm
- Material&Finish:**
 Housing:PA46(UL94V-0),Beige
 Contact:Phosphor Bronze,Gold Plated Over Nickel
- Electrical Characteristics:**
 Current Rating:0.5A AC/DC
 Voltage Rating:100V AC/DC
 Contact Resistance:40 Milliohms Max.
 Insulation Resistance:100 Megaohms Min.
 Withstanding Voltage:500V RMS AC For 1 Minute
 Operation Temperature Range:-40°C~+105°C
- Environmental Characteristics:**
- RoHS Compliant**



Mating 180° Dimension

| Male Series No. | Female Series No. | A2 | H2 |
|-----------------|-------------------|------|------|
| 1632 | 1636 | 3.65 | 4.50 |
| 1633 | 1636 | 4.15 | 5.00 |
| 1634 | 1636 | 5.15 | 6.00 |
| 1635 | 1636 | 5.65 | 6.50 |

| Pin | A | B | C | D | Pin | A | B | C | D |
|-----|-------|-------|-------|-------|-----|-------|-------|-------|-------|
| 10 | 5.60 | 4.85 | 5.00 | 3.20 | 34 | 15.20 | 14.45 | 14.60 | 12.80 |
| 12 | 6.40 | 5.65 | 5.80 | 4.00 | 36 | 16.00 | 15.25 | 15.40 | 13.60 |
| 14 | 7.20 | 6.45 | 6.60 | 4.80 | 38 | 16.80 | 16.05 | 16.20 | 14.40 |
| 16 | 8.00 | 7.25 | 7.40 | 5.60 | 40 | 17.60 | 16.85 | 17.00 | 15.20 |
| 18 | 8.80 | 8.05 | 8.20 | 6.40 | 50 | 21.60 | 20.85 | 21.00 | 19.20 |
| 20 | 9.60 | 8.85 | 9.00 | 7.20 | 60 | 25.60 | 24.85 | 25.00 | 23.20 |
| 22 | 10.40 | 9.65 | 9.80 | 8.00 | 68 | 28.80 | 28.05 | 28.20 | 26.40 |
| 24 | 11.20 | 10.45 | 10.60 | 8.80 | 70 | 29.60 | 28.85 | 29.00 | 27.20 |
| 26 | 12.00 | 11.25 | 11.40 | 9.60 | 80 | 33.60 | 32.85 | 33.00 | 31.20 |
| 28 | 12.80 | 12.05 | 12.20 | 10.40 | 90 | 37.60 | 36.85 | 37.00 | 35.20 |
| 30 | 13.60 | 12.85 | 13.00 | 11.20 | 100 | 41.60 | 40.85 | 41.00 | 39.20 |
| 32 | 14.40 | 13.65 | 13.80 | 12.00 | | | | | |

4UCON 元化興業股份有限公司
4UCON TECHNOLOGY INC.

DRAWING No.

14444

APPROVED BY

MEI

CHECKED BY

HZF

DRAWING BY

HAO

SCALE

NONE

REV.

C2

UNLESS OTHERWISE SPECIFIED TOLERANCES ARE
.X ±0.20
.XX ±0.15
ANG.

UNIT

mm



| NO. | REV. | REVISIONS | CHK | DATE |
|-----|------|-------------|-----|------------|
| △C2 | | Modify Data | HZF | 03/06/2015 |
| △C1 | | Modify Data | HZF | 02/26/2014 |
| △C0 | | NEW RELEASE | HZF | 06/13/2013 |