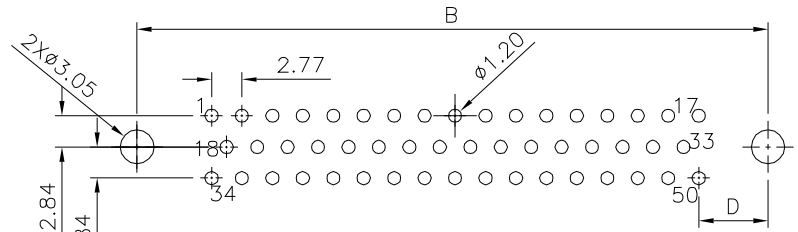
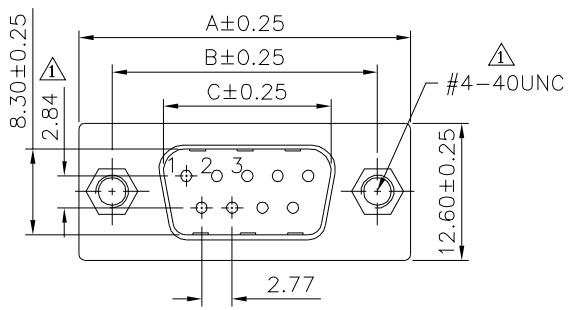


Recommended P.C.B. Layout

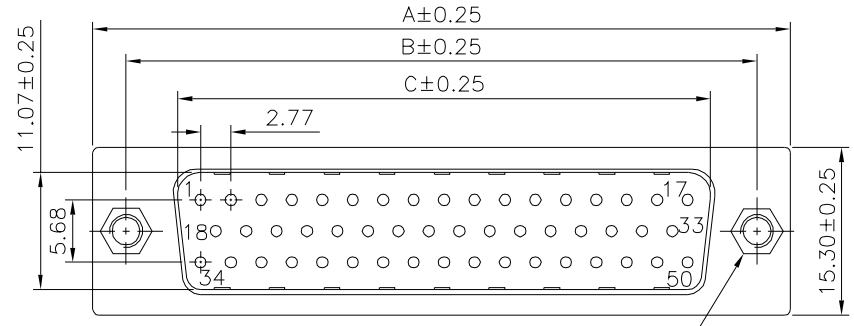


Recommended P.C.B. Layout

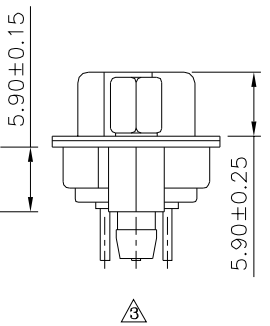
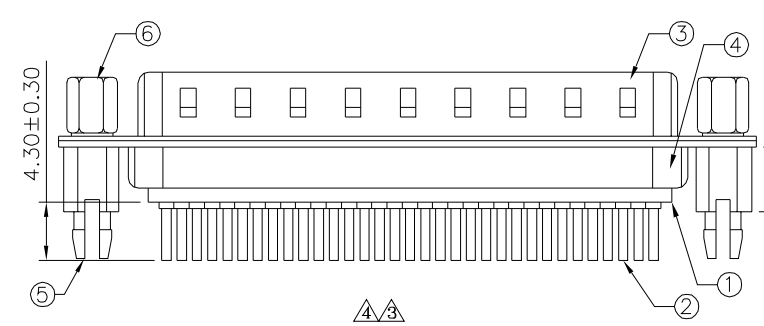
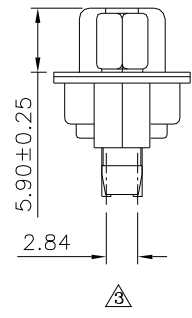
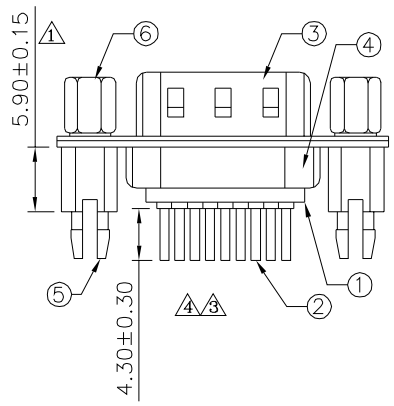
**SPECIFICATION**  
 Current Rating:1A Max.  
 Dielectric Withstanding Voltage:500V AC  
 For 1 Minute  
 Contact Resistance:30 Milliohms Max.  
 Insulation Resistance:1000 Megohms Min.  
 At DC 500V  
 Temperature Range:-55°C~+105°C  
 ① Housing:PBT(UL94V-0),Black  
 ② Contact:Brass,Gold Flash Over All,Over Nickel  
 ③ Front Shell:Cold Rolled Steel,Nickel Plated  
 Over Copper  
 ④ Back Shell:Cold Rolled Steel,Tin Plated Over  
 Copper  
 ⑤ Boardlock Nut:Brass,H4.75X11.5,Tin Plated  
 ⑥ Hex Screw:Brass,H5X10,Nickel Plated  
 RoHS Compliant



09,15,25,37P



50P



Pin	A	B	C	D
09	30.80	25.00	16.92	6.96
15	39.20	33.32	25.25	6.96
25	53.05	47.04	38.96	6.90
37	69.40	63.50	55.42	6.82
50	67.10	61.00	52.81	8.34

**4UCON** 元化興業股份有限公司  
 4UCON TECHNOLOGY INC.

DRAWING No. 15731		APPROVED BY MEI		UNLESS OTHERWISE SPECIFIED TOLERANCES ARE .X ±0.30 .XX ±0.20 .XXX ±0.10 ANG. ±1°	④ A4 Modify Data	HZF	03/09/2018
		CHECKED BY HZF			③ A3 Modify Data	HZF	08/23/2012
		DRAWING BY CYP			② A2 Modify Data	HZF	12/17/2009
SCALE	NONE	REV.	A4	UNIT mm	① A1 Modify Data	HZF	07/22/2009
				NO.REV.	① A0 NEW RELEASE		
					NO.REV.	REVISIONS	CHK DATE