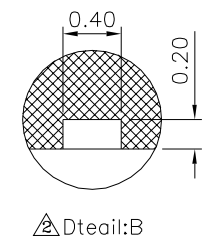
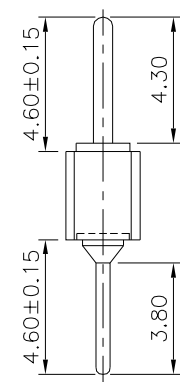
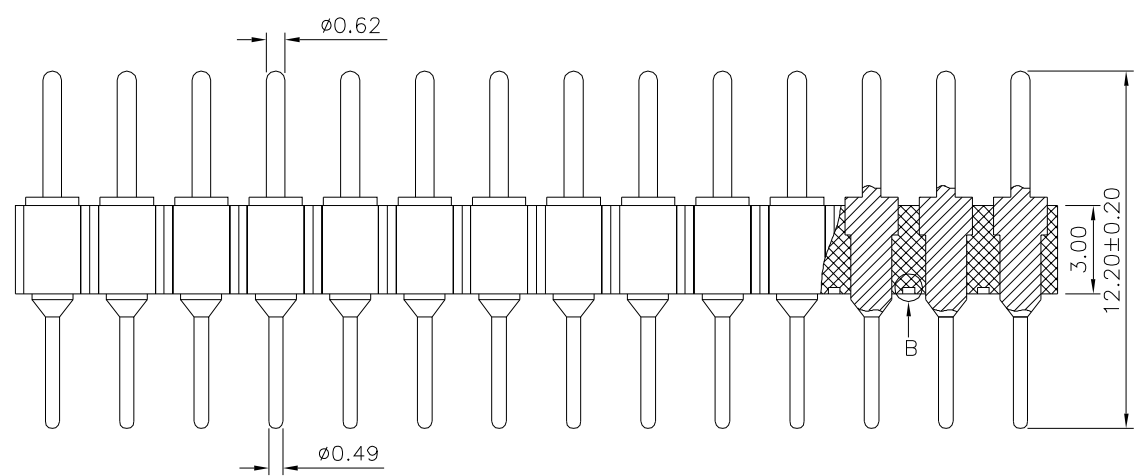
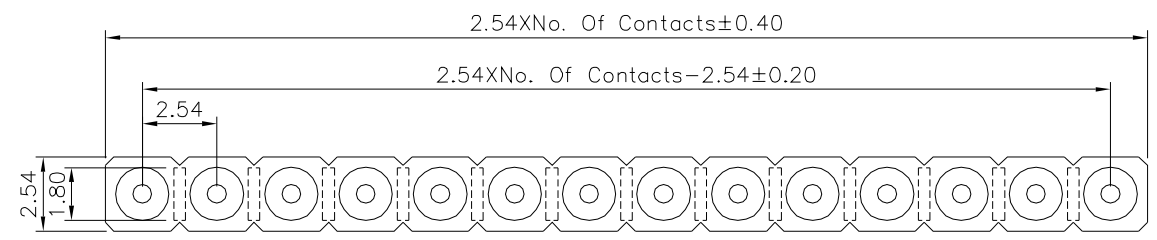
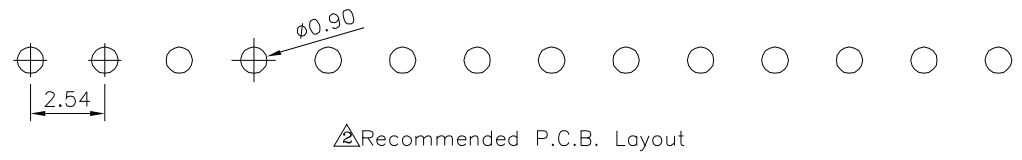


△△ SPECIFICATION

Current Rating: 3 Amps/Contact Max.
 Contact Resistance: 4 Milliohms Max./Contact
 Insulation Resistance: 1000 Megaohms Min. At 100V
 Operating Voltage: 60V AC/DC
 Operation Temperature: -40°C~+105°C
 Pin(Outer Sleeve): Brass, Tin Plated Over All, Over Nickel
 Insulator: PPS(UL94V-0), Black
 RoHS Compliant



4U CON 元化興業股份有限公司
 4U CON TECHNOLOGY INC.

DRAWING No.		APPROVED BY	
16701		MEI	
		CHECKED BY	
		HZF	
DRAWING BY		CYP	
SCALE	NONE	REV.	A3

UNLESS OTHERWISE SPECIFIED TOLERANCES ARE
 X. ±0.50
 .XX ±0.30
 .XXX ±0.20
 .XXX ±0.10
 ANG. ±5°
 UNIT mm

NO.	REV.	REVISIONS	CHK	DATE
3	A3	Modify Data	HZF	12/14/2017
2	A2	Modify Data	HZF	03/17/2011
1	A1	Modify Data	BECKY	05/05/2006
0	A0	NEW RELEASE	BECKY	07/20/2005