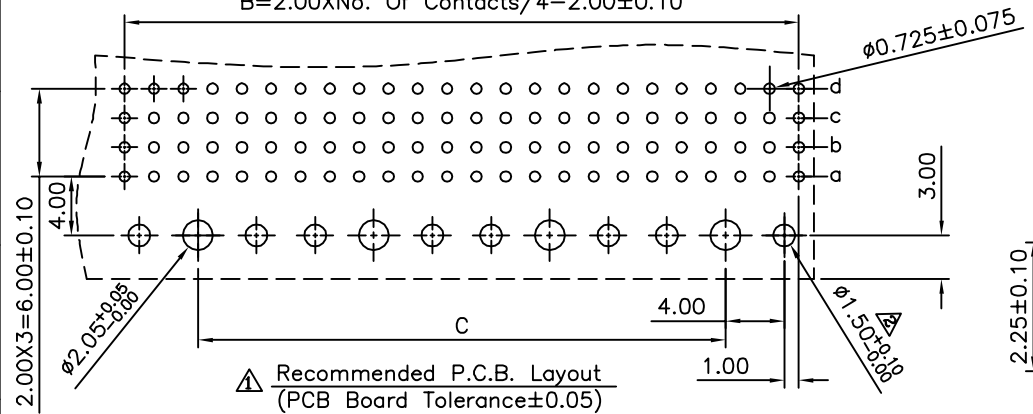
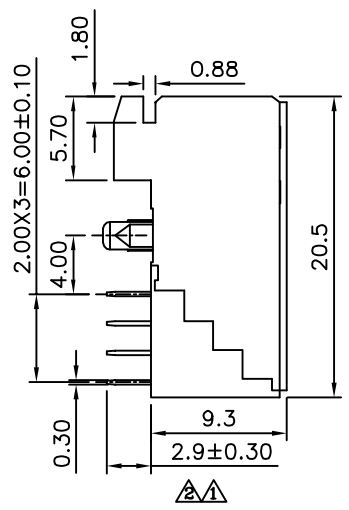
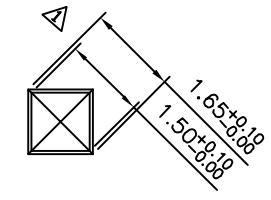
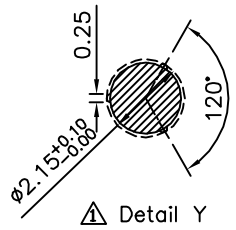
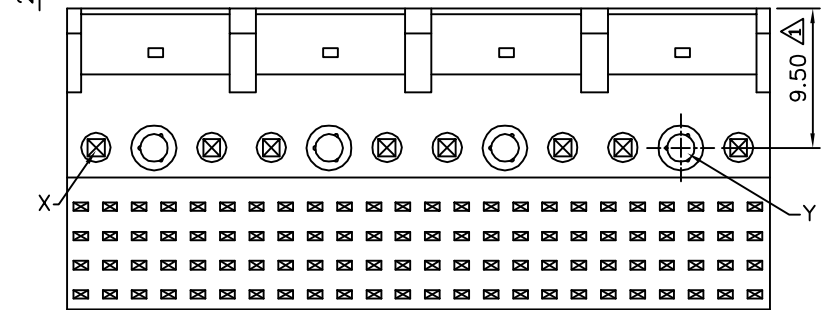
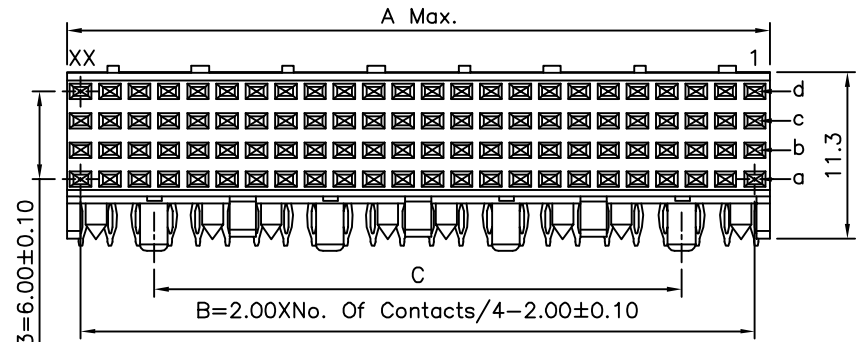
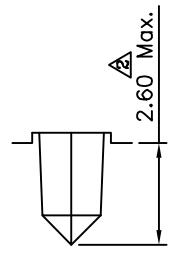
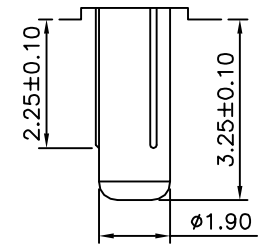


B=2.00XNo. Of Contacts/4-2.00±0.10



Recommended P.C.B. Layout
(PCB Board Tolerance±0.05)



△ SPECIFICATION

Current Rating:1 Amp
 Dielectric Withstanding Voltage:AC 1000V For 1 Minute
 Insulation Resistance:1000 Megaohms Min. At DC 500V
 Contact Resistance:30 Milliohms Max. At DC 100mA
 △ Operation Temperature:-55°C~+125°C
 △ Housing:LCP(UL94V-0)
 Contact:Phosphor Bronze
 Gold Plated 10u" On Contact Area,Tin
 Plated On Solder Tails,Over Nickel
 RoHS Compliant

| Pin | A | B | C |
|-----|-------|------|------|
| 24 | 11.95 | 10.0 | 0 |
| 48 | 23.95 | 22.0 | 12.0 |
| 72 | 35.95 | 34.0 | 24.0 |
| 96 | 47.95 | 46.0 | 36.0 |
| 120 | 59.95 | 58.0 | 48.0 |
| 144 | 71.95 | 70.0 | 60.0 |
| 168 | 83.95 | 82.0 | 72.0 |
| 192 | 95.95 | 94.0 | 84.0 |

4UCON 元化興業股份有限公司
4UCON TECHNOLOGY INC.

| | | | | |
|-------------|------|-------------|----|-------------------------------------------|
| DRAWING No. | | APPROVED BY | | UNLESS OTHERWISE SPECIFIED TOLERANCES ARE |
| 18210 | | EMILY | | |
| | | CHECKED BY | | |
| | | HZF | | △ X. ±0.5 △ .X ±0.25 △ .XX ±0.15 |
| | | DRAWING BY | | |
| | | SONG | | UNIT |
| SCALE | NONE | REV. | A2 | mm |

| | | | | |
|------|------|-------------|-----|------------|
| NO. | REV. | REVISIONS | CHK | DATE |
| △ A2 | | Modify Data | HZF | 12/20/2013 |
| △ A1 | | Modify Data | HZF | 03/05/2010 |
| △ A0 | | NEW RELEASE | HZF | 06/20/2009 |